

BMP

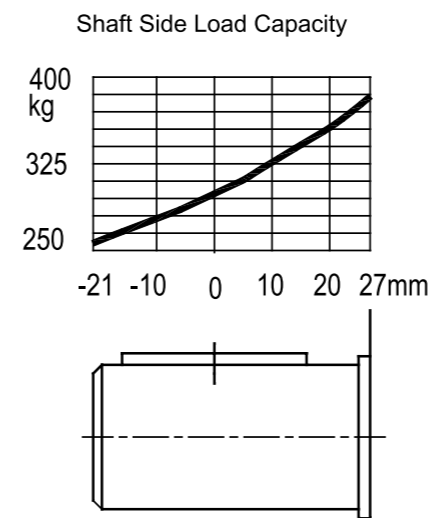
Features

- ◉ Compact in design with spool valving and Geroler
- ◉ Imported high pressure capacity shaft seal ;
- ◉ Wide variety of mounting flanges, shafts , ports and speed provides design flexibility ;
- ◉ Direction of shaft rotation and speed can becontrolled easily and smoothly ;
- ◉ Best combination of efficiency and economy in medium duty applications.



Specification Data

(ml/r) Displacement		50	63	80	100	125	160	200	250	315	400
(LPM) Flow	Cont.	38	45	55	55	55	55	55	55	55	55
	Int..	45	53	65	65	65	65	65	65	65	65
(RPM) Speed	Cont.	684	643	618	500	400	320	255	202	160	125
	Int..	810	757	730	590	472	12.5	300	240	190	148
(Mpa) Pressure	Cont.	12.5	12.5	12.5	12.5	12.5	378	11	11	10	9
	Int..	15	15	15	15	15	15	12.5	12.5	12.5	11
(N*m) Torque	Cont.	74	93	124	155	193	248	273	340	375	430
	Int..	89	109	145	182	228	294	310	388	469	496



- ◉ Max. pressure is the allowed pressure at the inlet port.
- ◉ A simultaneous maximum RPM and maximum pressure NOT recommended
Maximum pressure or maximum RPM operation: 10% of every minute.
- ◉ Recommended fluids: Anti-wear type of hydraulic oil. Viscosity recommended 37-73 cSt. Recommended filtration ISO18/13.
- ◉ Maximum operating temperature recommended 80°C.
- ◉ Special high pressure capacity shaft seal ensures back pressure up to 10 Mpa. Recommended preferable back pressure 5 Mpa. Case drain line is recommended when back pressure higher than 5 Mpa.. The motor life is benefited from a case drain line.
- ◉ It is highly recommended that the motor runs at 30% of rated pressure for at least one hour before application of full load. Be sure the motor is filled with fluid prior only to any load applications.

BMP Performance Data

Continuous
Intermittent

50 cc/r

Flow LPM	Pressure Bar									
	28	41	55	69	83	97	110	124	138	
7.6	18	28	38	45	54	62				
15.1	18	27	37	44	53	62	70	78	79	
	260	250	238	231	215	206	196	188	229	
22.7	16	24	32	40	49	58	65	71	80	
	414	406	395	385	375	368	356	345	370	
30.3	13	21	30	37	46	55	62	68	81	
	550	540	528	515	502	485	480	672	518	
37.9	14	23	34	43	51	61	68	71	81	
	698	698	693	690	689	684	681	676	672	
45.4		24	30	42	51	60	68	73	84	
		859	856	853	851	847	844	837	832	

63 cc/r

Flow LPM	Pressure Bar									
	28	41	55	69	83	97	110	124	138	
7.6	20	29	40	52	63	74				
15.1	110	108	108	105	104	103				
	20	29	40	50	58	69	77	86	93	
22.7	220	214	212	212	206	202	200	198	198	
	20	28	38	47	58	67	76	84	93	
30.3	332	330	326	324	320	316	314	310	305	
	18	26	34	44	53	63	74	82	89	
37.9	443	440	436	434	432	430	428	426	425	
	16	25	34	43	51	61	72	80	88	
45.4	554	550	548	546	542	540	538	534	530	
		23	30	42	51	60	68	78	84	
53		663	660	658	654	650	648	645	643	
			28	39	48	58	65	74	81	
			774	770	768	764	760	754	750	

BMP Performance Data

Continuous
Intermittent

200 cc/r

Flow LPM	Pressure Bar							
	28	41	55	69	83	97	110	124
7.6	69	102	135	173	215	252	281	
15.1	37	35	33	30	27	23	19	
	70	103	141	177	213	215	280	319
22.7	75	73	70	67	62	57	51	49
	64	95	135	176	215	248	238	318
30.3	114	113	113	111	107	103	101	100
	58	92	128	172	209	245	285	318
37.9	153	152	150	147	144	140	135	133
	63	96	135	173	210	247	282	315
45.4	192	190	181	182	177	173	167	165
	56	90	130	164	203	240	271	309
53.0	230	228	226	223	219	214	210	208
	88	128	161	201	238	270	308	
56.8	267	264	262	256	252	246	242	
	86	125	158	179	233	263	301	
68	284	282	279	278	275	274	269	
	81	118	152	192	226	265	295	
	339	337	336	333	331	328	324	

250cc/r

Flow LPM	Pressure Bar						
	28	41	55	69	83	100	124
7.6	76	115	160	209	253	304	
15.1	28	27	25	24	22	19	
	76	116	159	207	252	303	378
22.7	62	61	59	58	55	48	48
	71	108	153	201	250	301	378
30.3	93	92	90	87	83	76	75
	63	102	150	200	249	297	376
37.9	124	124	122	119	115	109	107
	58	101	147	195	242	293	372
45.4	157	156	154	150	146	139	137
	48	90	136	185	230	284	368
53.0	188	187	185	180	176	171	169
	47	84	133	179	219	275	366
56.8	219	218	216	213	209	200	175
	81	129	171	204	273	365	
68	235	234	232	229	228	228	
	81	129	170	202	270	362	
	281	280	278	272	273	269	

295 Torque Nm
324 Speed RPM

80 cc/r

Flow LPM	Pressure Bar									
	28	41	55	69	83	97	110	124	138	
7.6	26	40	56	67	82	95	108			
15.1	91	90	87	84	83	77	73			
	26	40	55	68	82	95	110	124	138	
22.7	184	182	179	178	173	168	163	157	127	
	25	39	53	68	82	95	109	124	138	
30.3	277	276	270	268	265	256	254	245	210	
	23	38	51	66	80	94	108	123	139	
37.9	370	368	362	359	356	364	344	355	293	
	22	37	50	65	79	93	107	122	139	
45.4	426	46	452	450	446	436	432	423	376	
	20	35	48	63	78	91	106	120	137	
53	555	552	544	540	536	527	521	511	457	
	33	47	61	76	90	104	118	136		
56.8	634	633	629	626	616	611	599	535		
	46	60	74	89	104	118	136			
68	670	674	671	659	654	642	574			
	42	57	72	86	102	116				
		811	808	804	791	787	772			

35 Torque Nm
669 Speed RPM

100 cc/r

Flow LPM	Pressure Bar									
	28	41	55	69	83	97	110	124	138	
7.6	33	50	67	85	103	123	141			
15.1	73	72	69	67	65	61	57			
	32	49	67	84	102	122	141	154	173	
22.7	149	147	144	142	140	135	131	125	99	
	30	48	66	84	102	120	140	155	172	
30.3	224	222	219	217	213	208	204	196	165	
	28	46	64	81	99	117	130	151	173	
37.9	299	298	293	290	288	282	278	271	235	
	26	44	61	79	97	114	138	149	172	
45.4	374	372	366	364	361	354	351	343	302	
	25	43	59	77	95	112	131	147	169	
53	448	447	440	437	434	426	422	414	368	
	22	40	58	75	94	110	129	143	168	
56.8	522	520	512	510	509	500	495	485	436	
	39	56	74	93	107	127	141	168		
68	558	549	547	545	535	531	521	468		
	35	51	71	89	104	125	140			
	669	660	657	654	644	641	680			

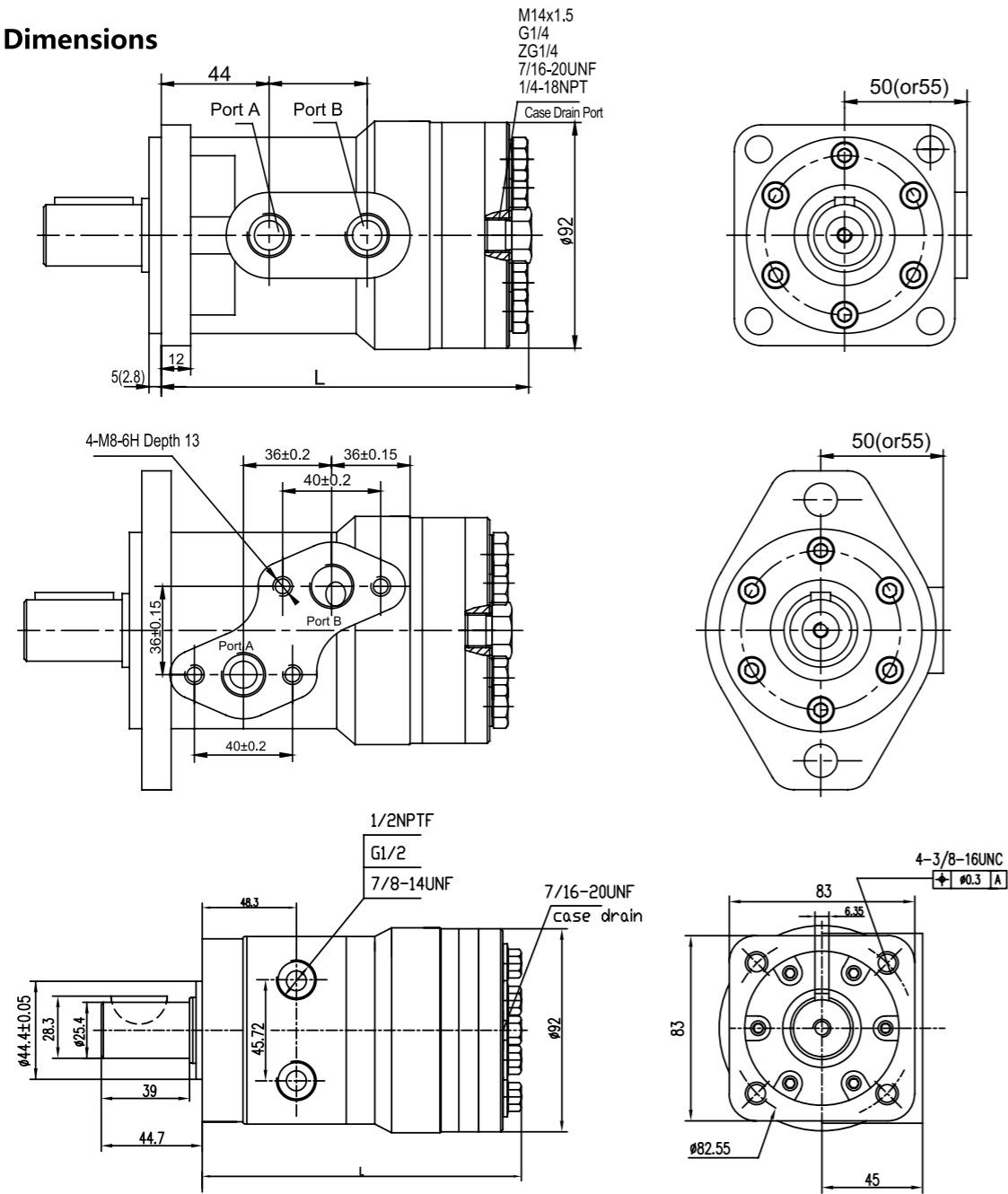
125 cc/r

Flow LPM	Pressure Bar									
	28	41	55	69	83	100	124	138		
7.6	43	64	86	108	130	157				
15.1	61	59	56	54	51	49				
	42	63	85	106	129	156	194	216		
22.7	121	119	116	112	110	107	103	99		
	182	180	177	174	171	168	165	162		
30.3	41	62	83	105	128	155	191	213		
	243	240	238	235	232	230	227	225		
37.9	40	61	83	104	126	155	190	213		
	304	302	319	317	314	311	308	305		
45.4	38	61	82	102	125	154	190	212		
	364	361	358	355	351	347	343	341		
53	36	60	81	101	124	152	189	211		
	424	421	418	415	412	408	403	401		
56.8	58	80	99	122	151	187	211			
	452	450	447	443	440	438	436			
68	57	79	97	121	149	185	209			
	544	542	539	536	533	531	527			

160 cc/r

Flow LPM	Pressure Bar									
	28	41	55	69	83	97	115	124		
7.6	56	85	113	141	175	206				
15.1	46	45	42	39	37	35				
	54	79	111	140	173	205				
22.7	94	93	91	88	84	79				
	55	78	111	142	174	205	228	261		
30.3	143	140	138	136	133	127	123	119		
	51	81	109	139	171	203	226	258		
37.9	190	187	186	183	179	175	168	166		
	45	75	110	135	171	199	230	256		
45.4	237	235	232	231	225	220	214	213		
	40	65	102	134	163	192	212	247		
53.0	285	285	281	279	276	267	263	258		
	38	61	98	129	158	189	212	246		
56.8	332	330	328	326	323	318	313	309		
	57	95	126	154	182	209	240			
68	354	350	345	348	346	342	338			
	52	90	119	147	176	200	229			
	425	421	421	418	417	415	412			

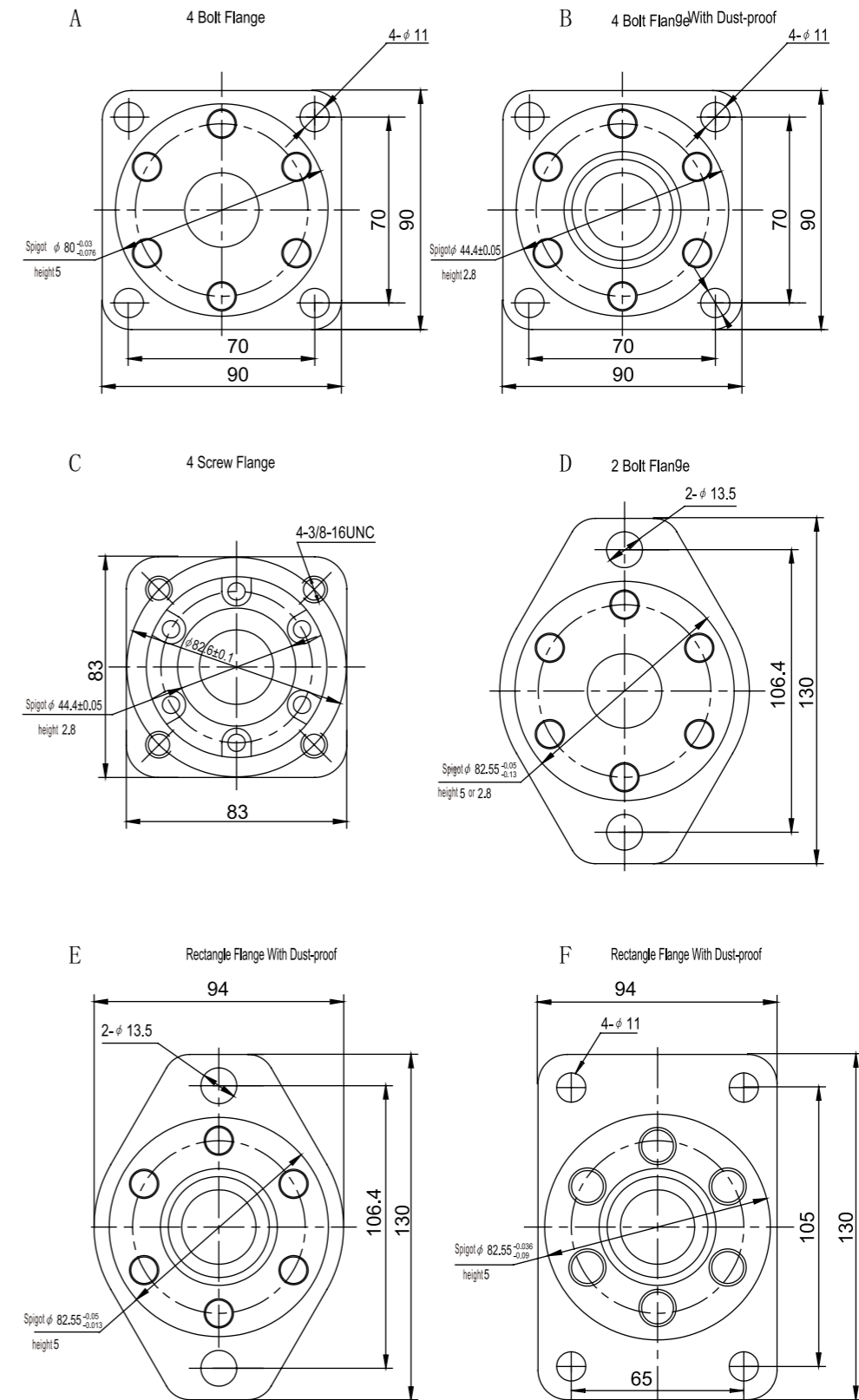
BMP Dimensions



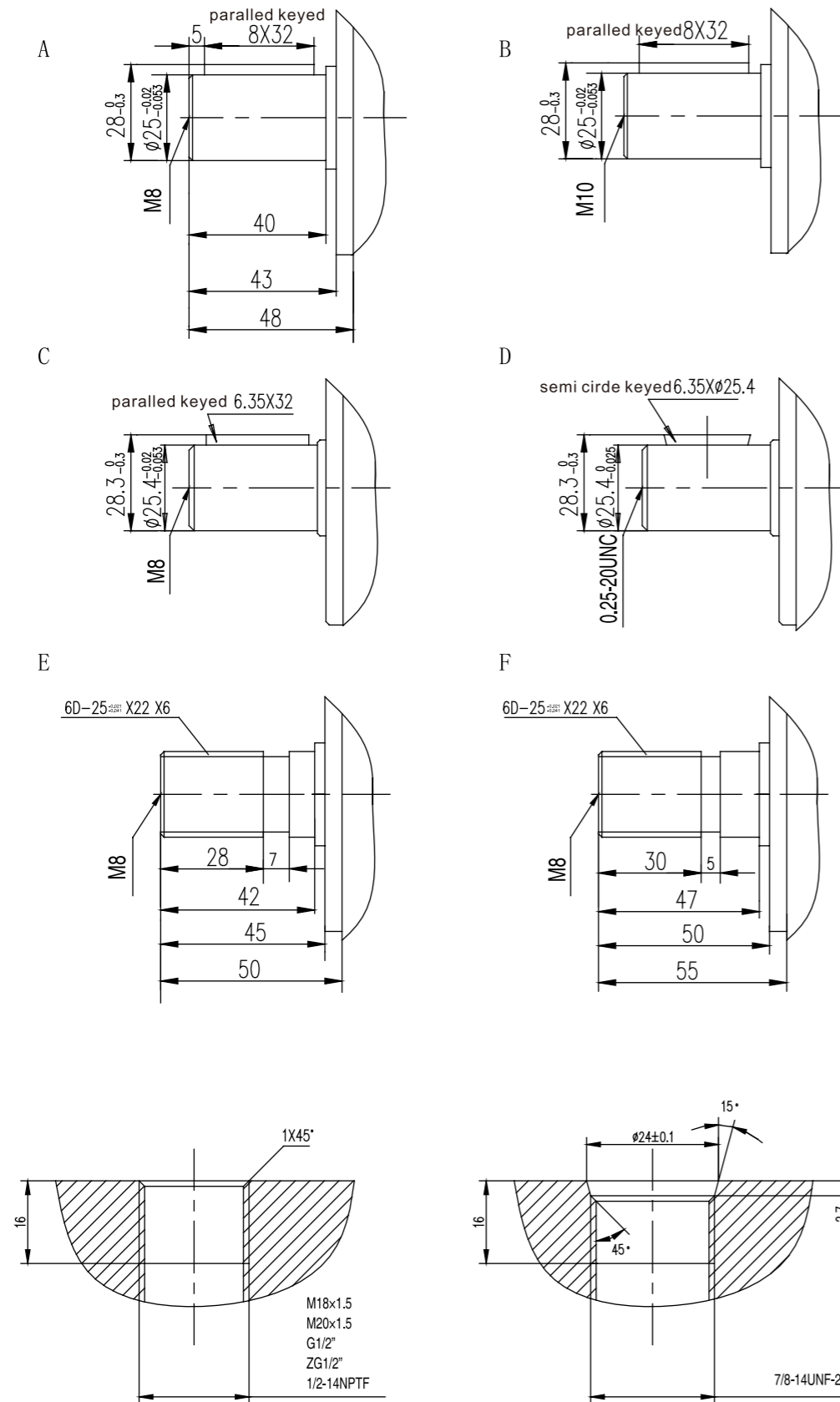
(ml/r) Displacement	50	63	80	100	125	160	200	250	315	400
L	147	149	150	153	157	162	168	176	186	198

Standard Direction of The Motor Rotation:
 CW—When A Port pressurized, Viewed From the Shaft End.

BMP Mounting Flange



BMP Shaft



BMP Port

BMP Ordering Information

Dimensions		Displacements												
Flange	Shaft	Port Size	50	63	80	100	125	160	200	250	315	400	500	
2holes diamond flange, spigot $\phi 82.55$	$\phi 25$ straight keyed 6.35	Port G1/2" Internal Drain		0051	0052		005a	0054	0055			0058		
	$\phi 25.4$ straight keyed 6.35	Port G1/2" Internal Drain	213-0060	0061	0062	0063	006a	0064	0065	0066	0067	0068	0069	
	$\phi 25.4$ straight keyed 6.35	Port G1/2" external drain M14X1.5	213-0090	0091	0092	0093	009a	0094	0095	0096	0097	0098	0099	
	$\phi 25$ straight keyed 8	Port G1/2" external drain M14X1.5	213-0080	0081	0082	0083	008a	0084	0085	0086	0087	0088	0089	
	$\phi 25$ straight keyed 8	straight port	G1/2" Internal Drain	213-0160	0161	0162	0163	016a	0164	0165	0166	0167	0168	0169
			Port M18X1.5 external drain M14X1.5	213-0040	0041	0042	0043	004a	0044	0045	0046	0047	0048	0049
4 holes square flange $\phi 82.55$	$\phi 25$ straight keyed 8	M18X1.5 Internal Drain	213-0260	0261	0262	0263	026a	0264	0265	0266	0267	0268	0269	
4 holes square spigot $\phi 80$	$\phi 25$ straight keyed 8	Port M18X1.5 external drain M14X1.5	213-1110	1111	1112	1113	111a	1114	1115	1116	1117	1118	1119	
		Port M18X1.5 external drain M14X1.5	213-0020	0021	0022	0023	002a	0024	0025	0026	0027	0028	0029	
		Port M18X1.5 Internal Drain	213-0010	0011	0012	0013	001a	0014	0015	0016	0017	0018	0019	
4 holes square with dust guard plate spigot $\phi 80$	$\phi 25$ straight keyed 8	Port M18X1.5 external drain M14X1.5	213-0120	0121	0122	0123	012a	0124	0125	0126	0127	0128	0129	
long square flange, spigot $\phi 85$	6D-25X22X6	Port M20X1.5 external drain M14X1.5	213-1140	1141	1142	1143	114a	1144	1145	1146	1147	1148	1149	
2 holes diamond flange, spigot $\phi 82.55$	$\phi 25$ straight keyed 6.35	Port G1/2" Internal Drain	213-0340	0341	0342	0343	034a	0344	0345	0346	0347	0348	0349	
	$\phi 25$ straight keyed 8	Port G1/2" external drain M14X1.5	213-0350	0351	0352	0353	035a	0354	0355	0356	0357	0358	0359	
		Port G1/2" Internal Drain	213-0330	0331	0332	0333	033a	0334	0335	0336	0337	0338	0339	
	$\phi 25$ straight keyed 6.35	Port G1/2" external drain M14X1.5	213-0360	0361	0362	0363	036a	0364	0365	0366	0367	0368	0369	
		Port G1/2"NPTF external drain M14X1.5	213-0370	0371	0372	0373	037a	0374	0375	0376	0377	0378	0379	
	$\phi 25$ straight keyed 8	Cross Port	Port G1/2" external drain G1/4"	213-0380	0381	0382	0383	038a	0384	0385	0386	0387	0388	0389
Port 1/2"NPTF Internal Drain			213-0440	0441	0442	0443	044a	0444	0445	0446	0447	0448	0449	
$\phi 25$ straight keyed 6.35	Cross Port	4-M8 plate-type Internal Drain	213-0450	0451	0452	0453	045a	0454	0455	0456	0457	0458	0459	
		1/2NPTF Outlet drain port	213-2100	2101	2102	2103	210a	2104	2105	2106	2107	2108	2109	