

4WE3 TYPE 61 SERIES SOLENOID DIRECTIONAL VALVES



4WE 3**61/D24 L



4WE 3**61/D24 F



ORDERING CODE

4 WE 3 E 61 / D24 H

Main ports =3
Main ports =4

Solenoid
Directional Valves

Size
3=3 Size

Spool Symbols

61 series(with three holes install)

No Code=NBR Seals
V=FKM Seals

H:DIN43650 Type Plug
L:DIN43650 Type Plug with Lamp
F:Deutsch protection degree IP69K
A:AMP Junior-Timer,protection degree IP66
D:With two lead wires

D12=DC12V
D24=DC24V

O=without spring return
OF=Without spring return with detent
(only suit two position valve with two solenoids)

4WE 4**61/24 LS



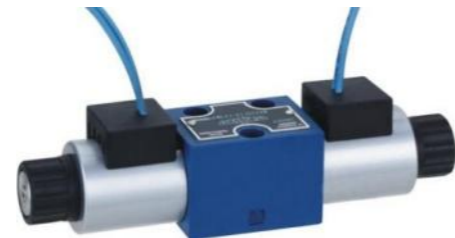
4WE 4**61/D24 AS



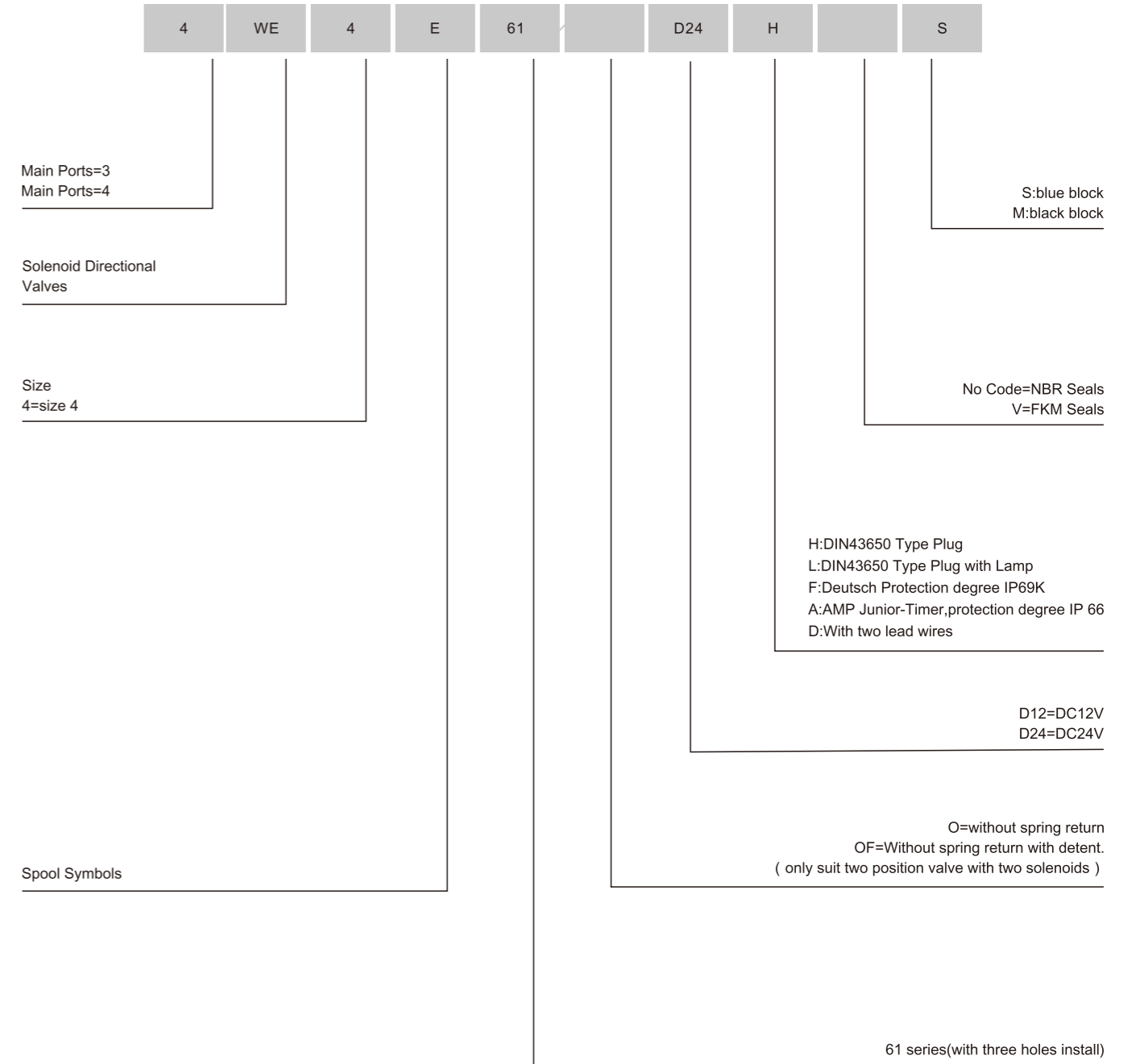
4WE 4**61/D24 FS



4WE 4**61/D24 DS



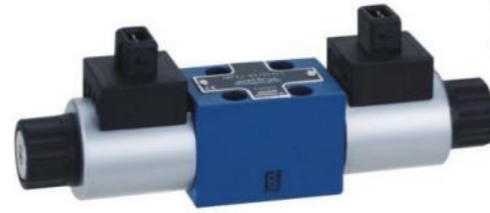
ORDERING CODE



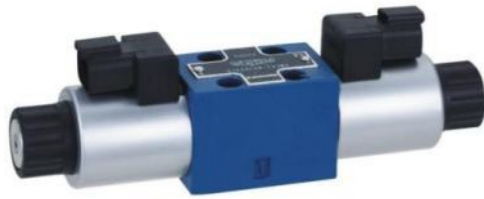
4WE 4**60/D24 LS



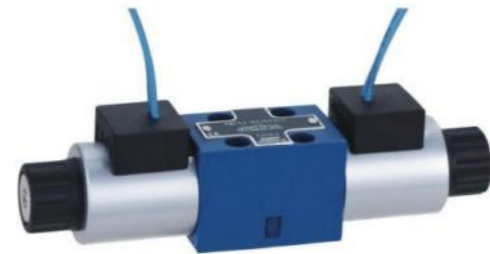
4WE 4**60/D24 AS



4WE 4**60/D24 FS



4WE 4**60/D24 DS



ORDERING CODE

4	WE	4	E	60	/	D24	H		
---	----	---	---	----	---	-----	---	--	--

Main ports =3
Main ports=4

Solenoid Directional Valves

Size
4=4 Size

Spool Symbols

S : blue block
M : black block

No Code=NBR Seals
V=FKM Seals

H: DIN43650 Type Plug
L: DIN43650 Type Plug with Lamp
F: Deutsch protection degree IP69K
A: AMP Junior-Timer, protection degree IP66
D: With two lead wires

D12=DC12V
D24=DC24V

O=without spring return
OF:Without spring return with detent.
(only suit tow position valve with two solenoids)

60 series (with four holes install)

4WE6 SERIES SOLENOID DIRECTIONAL VALVES

4WE 6**6X/ED24 AL



4WE 6**6X/EA220 LL



4WE 6**6X/ED24 LL



4WE 6**6X/ED24 BL



4WE 6**6X/ER220 LL



4WE 6**6X/ER220 BL



4WE 6**6X/ED24 FL



4WE 6**6X/EA220 BL



4WE6 SERIES SOLENOID DIRECTIONAL VALVES

4WE 6**6X/ED24 AH



4WE 6**6X/EA220 LH



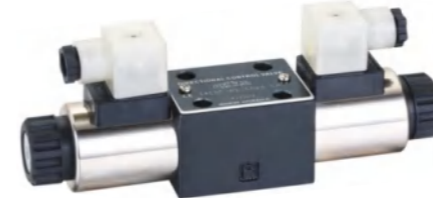
4WE 6**6X/ED24 LH



4WE 6**6X/ED24 BH



4WE 6**6X/ER220 LH



4WE 6**6X/ER220 BH



4WE 6**6X/ED24 FH



4WE 6**6X/EA220 BH



4WE6 SERIES SOLENOID DIRECTIONAL VALVES WITH SELF-LOCKING EMERGENCY PUSH ROD

4WE 6**6X/ED24 NP AL



4WE 6**6X/ED24 NP FL



4WE 6**6X/ED24 NP LL



4WE 6**6X/ED24 NP BL



4WE 6**6X/ER220 NP LL



4WE 6**6X/ER220 NP BL



4WE6 SERIES SOLENOID DIRECTIONAL VALVES

ORDERING CODE

	4	WE	6	E	6X		E	D24	N	L			L
Main ports =3 Main ports=4													
solenoid direc- tional valves													
Size size=6													
Spool Symbols													
Series 60-90=6X 60-90 series shape is interchangeable													
no code=with spring return O=without spring return OF= Without spring return with detent.													
connect with solenoid thread=E													
DC12V=D12 AC110V-50HZ=A110-50 RAC110V= R110													
DC24V=D24 AC220V-50HZ=A220-50 RAC220V=R220													
NP= with self-locking emergency push rod N=with manual push rod													
H:DIN43650 Type Plug L:DIN43650 Type Plug with Lamp F:Deutsch.protection degree IP69K A:AMP Junior-Timer,protection degree IP66 D:With double leads B:With terminal box													
no code=without locating bore With Orifice bore B08=φ0.8mm With Orifice bore B10=φ1.0mm With Orifice bore B12=φ1.2mm													
No Code=NBR Seals V=FKM Seals													
block print H:Black color L:Blue color													

4WE10 SERIES SOLENOID DIRECTIONAL VALVES

4WE 10**3X/CD24 AL



4WE 10**3X/CA220 LL



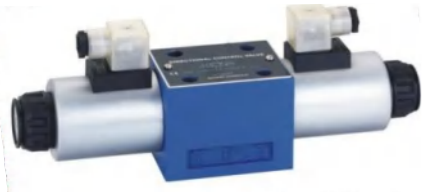
4WE 10**3X/CD24 LL



4WE 10**3X/CD24 BL



4WE 10**3X/CR220 LL



4WE 10**3X/CR220 BL



4WE 10**3X/CD24 FL



4WE 10**3X/CA220 BL



4WE10 SERIES SOLENOID DIRECTIONAL VALVES

4WE 10**3X/CD24 AH



4WE 10**3X/CA220 LH



4WE 10**3X/CD24 LH



4WE 10**3X/CD24 BH



4WE 10**3X/CR220 LH



4WE 10**3X/CR220 BH



4WE 10**3X/CD24 FH



4WE 10**3X/CA220 BH



ORDERING CODE

4	WE	10	E	3X	C	D24	L	L
---	----	----	---	----	---	-----	---	---

Main Ports=3
Main Ports=4

Solenoid Directional Valves

Size
Size=10

Spool Symbols:

Series 30-39=3X
(30-39:no change of the installation and connection size)

No code=with spring return
O=without spring return
Of=without spring return with detent.

Connect With Solenoid Thread=C

DC12V=D12 DC24V=DC24
AC110V-50HZ=A110-50 AC220V-50HZ=A220-50
RAC110V=R110 RAC220V=R220

NP=with self-locking emergency push rod
N=with manual push rod

H: DIN43650 Type Plug
L: DIN43650 Type Plug with Lamp
F: Deutsch. protection degree IP69K
A: AMP Junior-Timer, protection degree IP66
D: With two wires
B: With terminal box

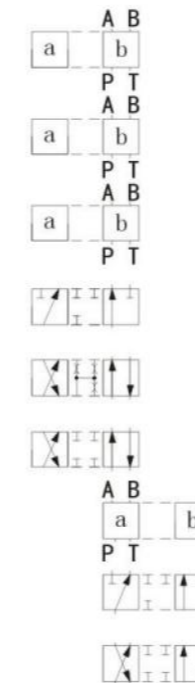
no code= without locating bore
B08=Orifice bore ϕ 0.8 mm
B10=Orifice bore ϕ 1.0mm
B12=Orifice bore ϕ 1.2mm

No Code=NBR Seals
V= FKM Seals

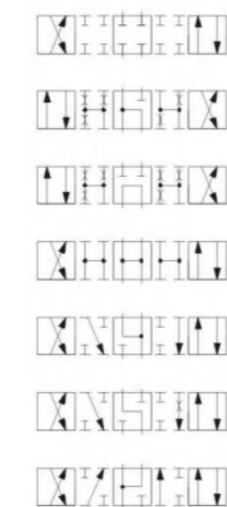
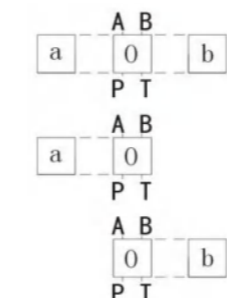
clock print:
H: Black color
L: Blue color

SPOOL SYMBOLS

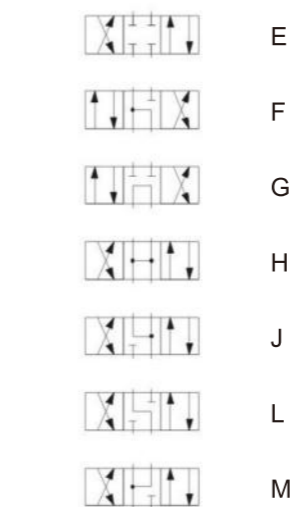
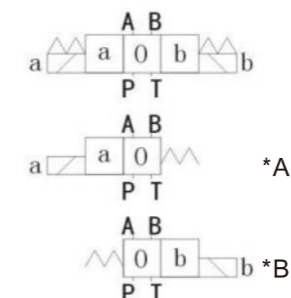
TRANSITION SPOOL



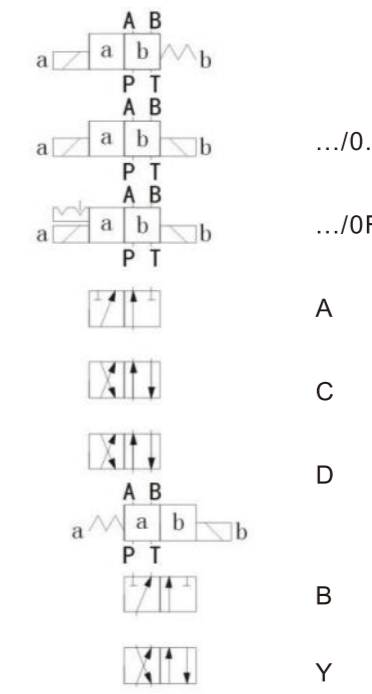
TRANSITION SPOOL



SLIDE VALVE SPOOL



SLIDE VALVE SPOOL



★ Spool symbol with core a or b then code should be XA or XB
For example: spool E with core position a, then code should be EA

