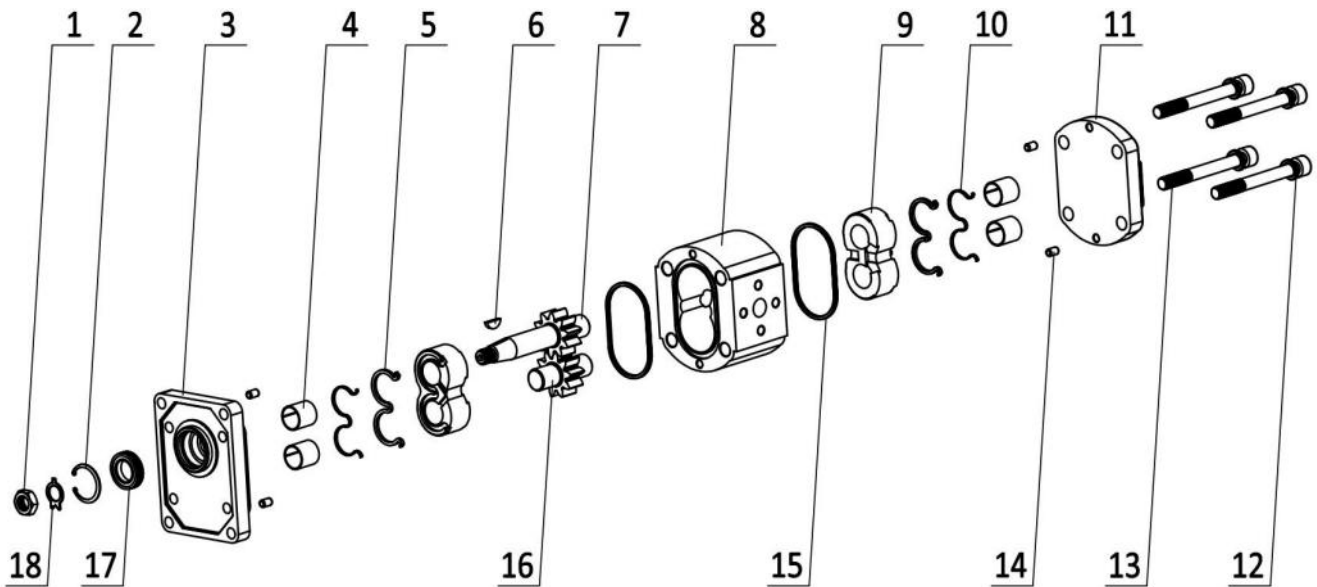


产品目录 INDEX

产品结构 Product structure	1
技术资料 Technical information	2
HDK0.5 系列 HDK0.5 series	6
HDK1 系列 HDK1 series	17
HDA1[HDH1] 系列 HDA1[HDH1] series	26
HDA1.5 系列 HDA1.5 series	33
HDA2[HDH2] 系列 HDA2[HDH2] series	37
HDH3 系列 HDH3 series	52
HDK1/1 系列 HDK1/1 series	62
HDH2/2 系列 HDH2/2 series	65
HDH3/2 系列 HDH3/2 series	70
HDH3/3 系列 HDH3/3 series	75

产品结构 PRODUCT STRUCTURE



编号 (No.)	描述 (Description)	数量 (Quantity)
1	螺母 (Nut)	1
2	孔用挡圈 (Stop ring)	1
3	前盖 (Front cover)	1
4	DU 衬套 (DU bearing)	4
5	W 型密封件 (W type seal)	2
6	半圆键 (Woodruff key)	1
7	主动齿轮 (Drive gear)	1
8	泵体 (Body)	1
9	轴套 (Bushing)	2
10	W 型挡圈 (W type retaining ring)	2
11	后盖 (End cover)	1
12	弹簧垫圈 (Spring washer)	4
13	螺栓 (Bolt)	4
14	定位销 (Centering pin)	4
15	壳体密封件 (Housing seal)	2
16	从动齿轮 (Driven gear)	1
17	油封 (Shaft seal)	1
18	止动垫圈 (Lock gasket)	1

技术资料 TECHNICAL INFORMATION

为了使齿轮泵获得最佳的性能和更长的使用寿命，请严格遵循样本给出的安装和使用说明。

Please strictly follow assembly and use indications given in this catalogue for top performance and longer life of Huli gear pump .

安装说明 INSTALLATION NOTES

在系统启动进行连续工作之前，我们建议采取如下的预防措施：

- 检查泵的旋向是否与原动机的输出轴旋向相反，切勿逆向旋转。
- 泵的主动轴不允许承受径向力和轴向力，且主动轴与原动机输出轴的安装同轴度不得大于 0.08mm，泵支座的安装平面与止口的垂直度不得大于 0.05mm。
- 在标准工况下，吸油管路的压力应低于大气压，工作时进油口压力应在 0.7 至 3bar 之间（绝对压力），泵的吸油高度不得大于 0.5m，且泵的进、出油管 and 法兰不得漏气。
- 工作油液应保持清洁，吸油管安装过滤精度 80 至 100 μm 的滤油器，回油管安装过滤精度不小于 10 至 20 μm 的滤油器，进油滤油器有效通流量应大于泵最大吸油流量的两倍，并保持通畅，防止堵塞，且要根据污染情况定期清洗油路或者更换油液。
- 泵在初次启动之前，必须注油将管路中的空气排出，确保泵在启动时及时吸上油，避免早期磨损。

Before starting the system on a continuous basis , we suggest to adopt as follows precautions:

- Check whether the rotation direction of the pump is opposite to that of the output shaft of the engine , be sure no reversion revolved .
- The driving shaft of the pump is not allowed to bear radial and axial forces , and the installed coaxiality of the drive shaft and the output shaft of the prime mover shall not be greater than 0.08mm , and the perpendicularity between the installation plane and the stop port of the pump support shall not be greater than 0.05mm .
- Under standard operating conditions, the pressure of the suction pipe shall be lower than atmospheric pressure, and the pressure of the oil inlet shall be between 0.7 and 3bar (absolute pressure) during operation , the suction height of the pump shall not be greater than 0.5m, and the inlet and outlet pipelines and flanges of the pump shall not leak air.
- The working oil shall be kept clean, and the suction pipe shall be installed with an oil filter with filtration accuracy of 80 to 100 micron , and the return pipe shall be installed with an oil filter with filtration accuracy of 10 to 20 micron , the effective flow rate of the oil intake filter shall be more than twice the maximum oil absorption rate of the pump , And keep the pipeline unblocked , prevent blockage , and according to the pollution situation to regularly clean the pipeline or replace the oil.
- Pump before the first start , must be filled with oil to remove the air in the pipeline , to ensure that the pump at the start of the timely absorption of oil , to avoid early wear.

液压油 HYDRAULIC FLUIDS

使用具有抗氧化性、抗气泡（快速使气泡破裂）、耐磨损、耐腐蚀以及有润滑特性的液压油，油液同时应该遵循 DIN 51525 和 VDMA 24317 标准，且通过 GZG 的 11 级测试。

对于标准型，油液温度应该在 -10°C 至 80°C 之间，其运动粘度范围如下：

Use specific mineral oil based hydraulic fluids having good antioxidant , anti-foaming (rapid deaeration) , anti-wear , anti--corrosion , and lubricating properties , Fluids should also comply with DIN 51525 and VDMA 24317 standards and get through 11th stage of FZG test .

For the standard models , the temperature of the fluid should range between -10°C and 80°C .

Fluid kinematic viscosity ranges are the following :

许用范围	Allowed range	6~500cSt
推荐范围	Recommended range	10~100cSt
启动时允许值	Value allowed at start up	~2000cSt

过滤建议 FILTER RECOMMENDATION

大量事实证明，多数齿轮泵的过早失效都是由于油液的污染引起的，由于我们的质量保证并不包括液压系统中颗粒造成的磨损，所以我们建议对油液进行过滤，以便将油液中污染粒子的尺寸和浓度降低到允许的最低值。

过滤系统应该一直保证污染度等级不要超过下表所示的值：：

It is widely known that most pumps early failures are due to contaminated fluids , as our quality assurance does not cover wear caused by particles in the hydraulic system , we recommend a filter to be used , which can reduce the degree of contamination to a permissible dimension in terms of the size and concentration of dirt particles .

The filtering system shall always ensure contamination levels not exceeding the values indicated below :

工作压力	Pressure	<140 bar	140~210 bar	>210 bar
NAS 1683 污染等级	NAS 1638 Class	10	9	8
ISO 4406 污染等级	ISO 4406 Class	19/16	18/15	17/14
过滤比 $\beta_{x=75}$	Ratio $\beta_{x=75}$	25~40 μm	12~15 μm	6~12 μm

进油管 and 出油管 INLET AND DELIVERY LINES

液压系统的管路不应突然变向、急弯及端面突然变化，管路不要太长或不成比例，管路端面处应有足够的尺寸，以便油液流速不要超过推荐值。

建议认真考虑进出油管法兰接头处通径的缩减量。

流速参考值如下表：

Hydraulic system pipes should show no sudden changes of direction , sharp bends and sudden differences in cross-section . They should not be too long or out of proportion .

Pipe cross-section should be sized so that fluid velocity does not exceed recommended values .

It is advisable to carefully consider the possible diameter reduction of the inlet or outlet pipes fitted on flange fittings .

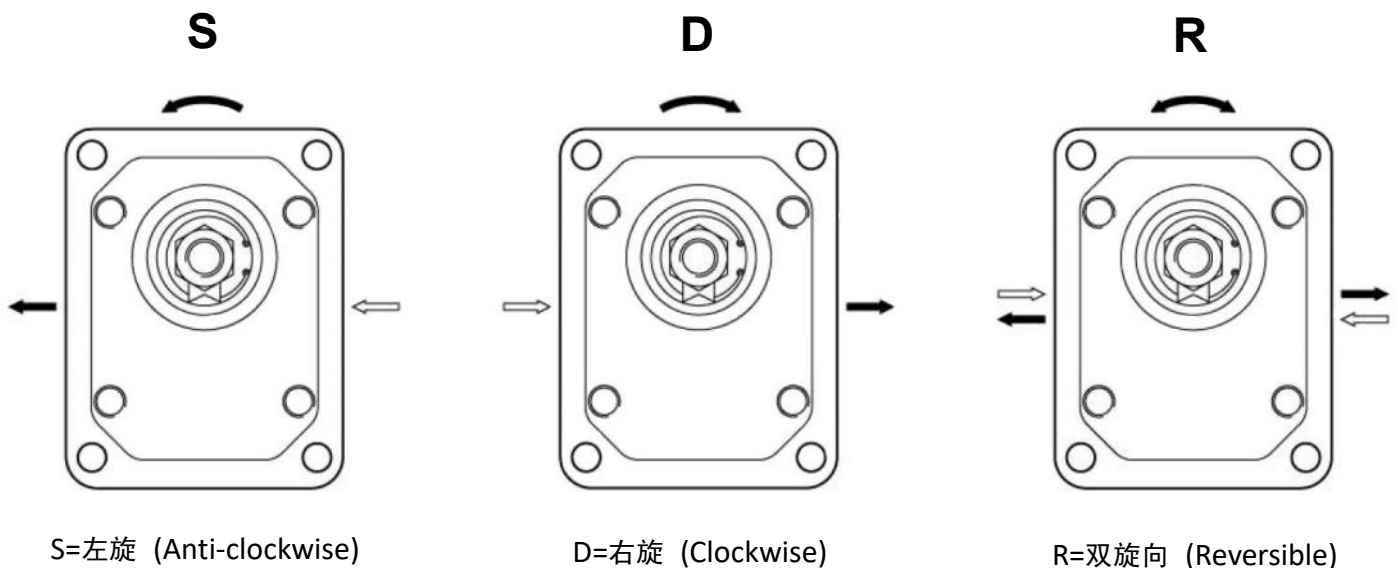
Reference values are the following :

进油管	Intake line	0.5~1.6 m/s
出油管	Delivery line	2~6 m/s
回油管	Return line	1.6~3 m/s

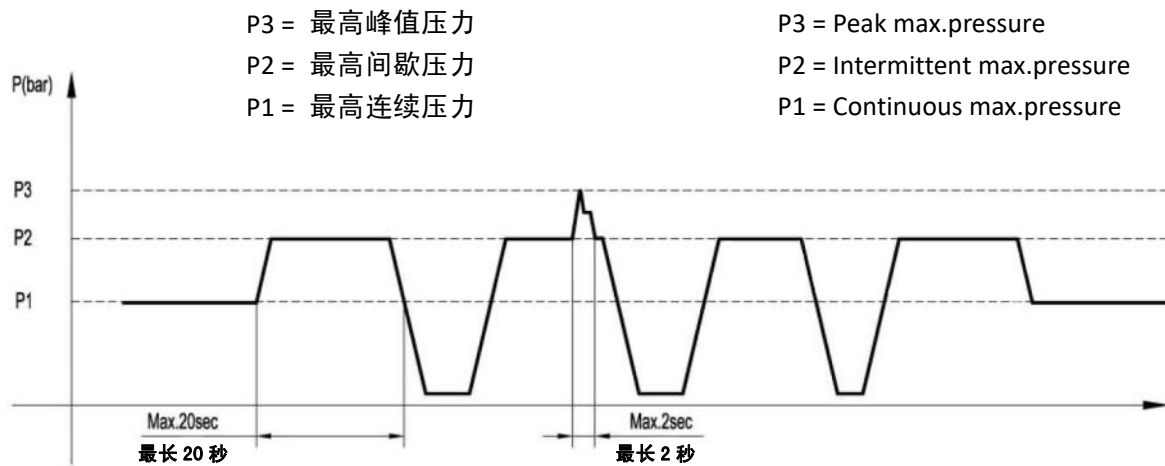
旋转方向 ROTATION DIRECTION

旋转方向定义：站在泵的前面，其传动轴面对自己，泵顺时针旋转时，为右旋，用“D”表示，反之，即泵逆时针旋转时，为左旋，用“S”表示。

Definition of rotation direction : when standing before the pump with driving shaft up with its projecting end towards the observer , the pump is rotating clockwise in case of right-hand rotation “C” , The contrary will happen with left-hand pumps “S” , keeping the same point of view .



压力定义 PRESSURE DEFINITION



泵的设计计算 DESIGN CALCULATIONS FOR PUMP

流量	Flow	Q	L/min
扭矩	Torque	M	Nm
功率	Power	P	kW
转速	Speed	n	r/min
压力	Pressure	ΔP	bar
排量	Displacement	V	cm ³ /rev

容积效率	Volumetric efficiency	η_v	≈ 0.93
机械效率	Mechanical efficiency	η_{hm}	≈ 0.85
总效率	Total efficiency	$\eta_t = \eta_v \cdot \eta_{hm}$	≈ 0.80

$Q = V \cdot n \cdot \eta_v \cdot 10^{-3}$ [L/min]	
$M = (\Delta P \cdot V) / (62.83 \cdot \eta_{hm})$ [Nm]	
$P = (\Delta P \cdot Q) / (612 \cdot \eta_t)$ [kW]	

HDK0.5

如何订购/HOW TO ORDER

HDK	0.5	旋向 Rotation	规格 Size	前盖 Front cover	油口 Ports	轴伸 Shaft	油口位置 Ports position	油封 Seals	可选项 Options	排油口 Drain
系列号 Series	组别 Group	D 顺时针转 Clockwise S 逆时针转 Anti-clockwise R 可正反转 Reversible	0.19 0.26 0.38 0.50 0.65 0.75 0.88 1.00 1.25 1.50 1.75 2.00	A0 A1 B0 B1 B2 B3 B4			省略 Omit A B C D R	省略 Omit V H T N	省略 Omit V	省略 Omit Q0 Q1 Q2

油口位置/Ports position

省略 - 侧进侧出
A - 前进前出
B - 后进前出
C - 后进侧出
D - 侧进后出
R - 后进后出

Omit - Side inlet and side outlet .
A - Front inlet and front outlet .
B - Back inlet and front outlet .
C - Back inlet and side outlet .
D - Side inlet and back outlet .
R - Back inlet and back outlet .

油封/Seals

省略 - 温度范围在-10°C~+80°C, 进油口最高绝对压力为 3bar。
V - 适用于高温介质, 温度范围在-10°C~+120°C。
H - 适用于低温介质, 温度范围在-40°C~+120°C。
T - 适用于进油口最大绝对压力 3~6bar。
N - 适用于进油口最大绝对压力 3~6bar。

Omit - Range between -10°C and +80°C, inlet pressure up to max. 3 bar absolute .
V - Version suitable for fluid at hi-temperatures , range between -10°C and +120°C.
H - Version suitable for fluid at low-temperatures , range between -40°C and +80°C.
T - Version suitable for inlet pressure up to max. 3 and 6 bar absolute.
N - Version suitable for inlet pressure up to max. 3 and 10 bar absolute .

可选项/Options

省略 - 没有阀。
V - 方向阀。

Omit - Have no valve .
V - Directional valve .

排油口/Drain

省略 - 没有排油口。
Q0 - 内部排油口。
Q1 - 外部排油口 ϕ 5。
Q2 - 外部排油口 G1/8。

Omit - Have no drain .
Q0 - Internal drain .
Q1 - External drain ϕ 5.
Q2 - External drain G1/8.

范例/Examples

HDK0.5D0.75B0L2B-B = HDK 系列, 0.5 组, 右旋, 0.75cc/rev 排量, B0 前盖, L2 油口, B 扁键轴伸, 后进前出, 标准油封。

HDK0.5D0.75B0L2B-B = HDK series , 0.5 group pump , Clockwise , 0.75 cc/rev , B0 front cover, L2 ports , C shaft , back inlet and front outlet , standard seal .

HDK0.5-B0



后盖：G1/4 螺纹深 11。

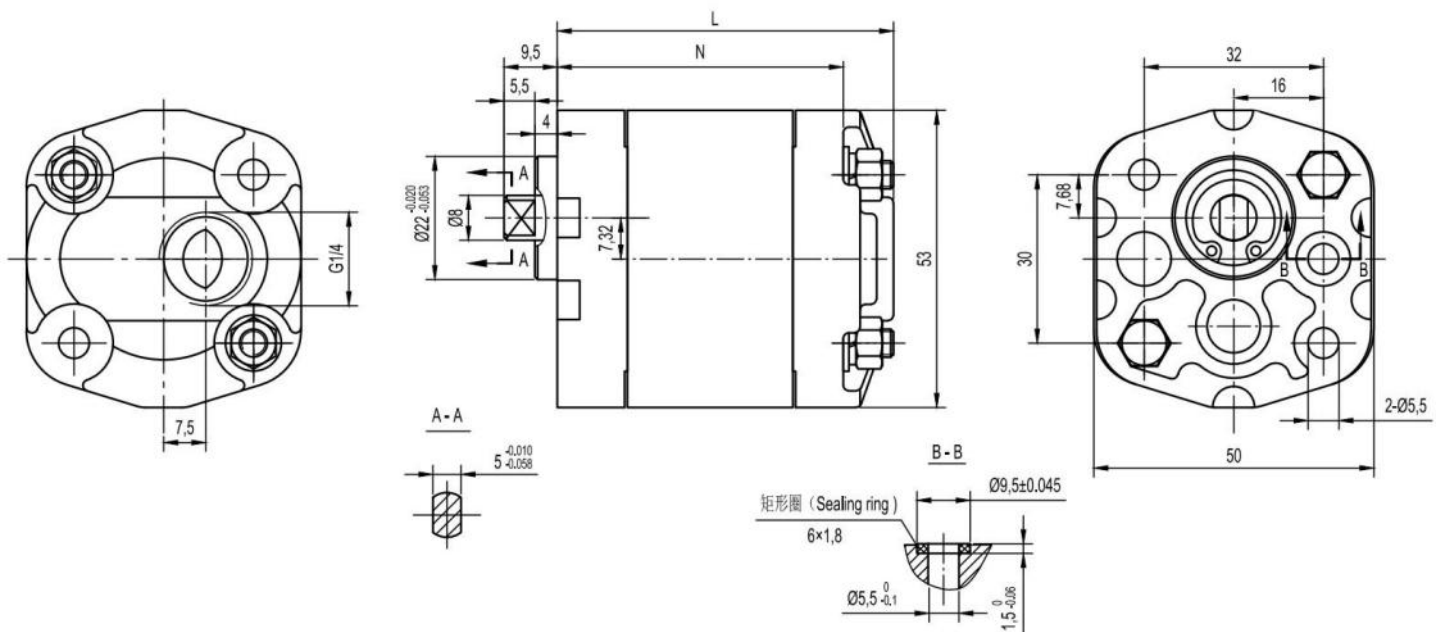
安装泵时，2 个 M5 的螺栓扭矩设定为 $5.4 \pm 0.5\text{Nm}$ 。

End cover : G1/4 thread depth 11.

To mount the pump , two M5 screws with A torque wrench setting fixed at $5.4 \pm 0.5\text{Nm}$.

进油口
INLET

出油口
OUTLET



规格 Type	排量 Displacement (cm ³ /rev)	最大压力 Max. pressure			最高转速 Max. speed (r/min)	最低转速 Min. speed (r/min)	尺寸 Dimensions	
		P1 bar	P2 bar	P3 bar			N mm	L mm
HDK0.5D0.19B0	0.19	200	230	250	7000	1000	51	60
HDK0.5D0.26B0	0.26	200	230	250	7000	1000	51.5	60.5
HDK0.5D0.38B0	0.38	200	230	250	7000	1000	52.5	61.5
HDK0.5D0.50B0	0.50	200	230	250	7000	1000	53.5	62.5
HDK0.5D0.65B0	0.65	200	230	250	7000	1000	54.5	63.5
HDK0.5D0.75B0	0.75	200	230	250	7000	1000	55.5	64.5
HDK0.5D0.88B0	0.88	200	230	250	7000	1000	56.5	65.5
HDK0.5D1.00B0	1.00	200	230	250	6000	850	57.5	66.5
HDK0.5D1.25B0	1.25	200	230	250	5000	700	59.5	68.5
HDK0.5D1.50B0	1.50	200	230	250	4000	600	61.5	70.5
HDK0.5D1.75B0	1.75	180	210	230	4000	600	63.5	72.5
HDK0.5D2.00B0	2.00	160	190	210	3000	500	65.5	74.5

HDK0.5-B1



2 个 G1/4 螺纹深 12。

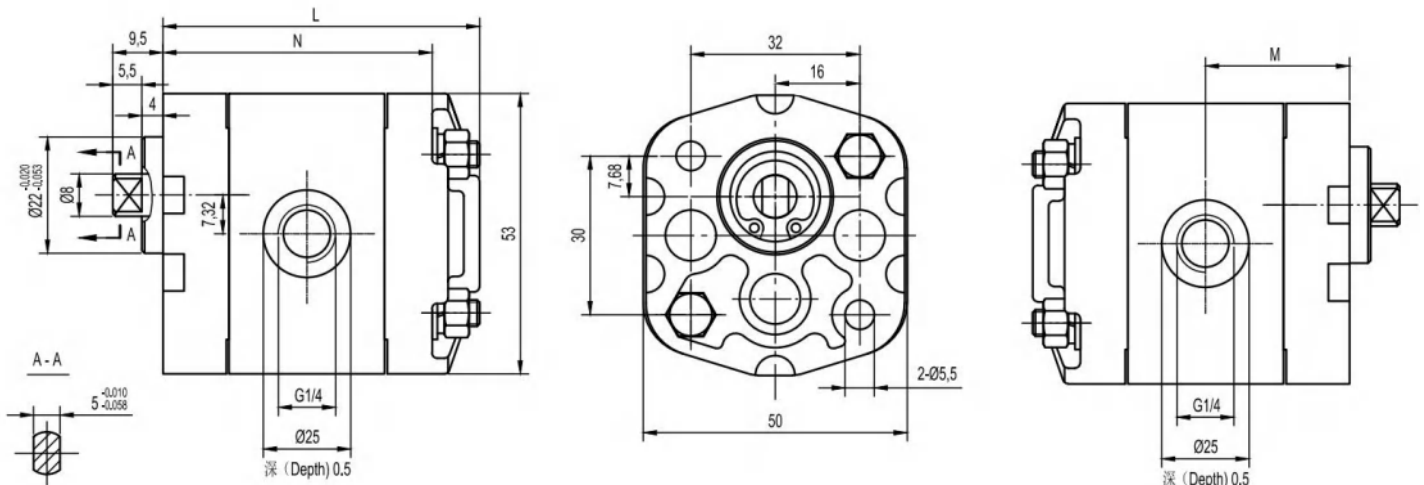
安装泵时，2 个 M5 的螺栓扭矩设定为 $5.4 \pm 0.5 \text{ Nm}$ 。

Two G1/4 threads depth 12.

To mount the pump, two M5 screws with A torque wrench setting fixed at $5.4 \pm 0.5 \text{ Nm}$.

出油口
OUTLET

进油口
INLET



规格 Type	排量 Displacement (cm^3/rev)	最大压力 Max. pressure			最高转速 Max. speed (r/min)	最低转速 Min. speed (r/min)	尺寸 Dimensions		
		P1 bar	P2 bar	P3 bar			N mm	L mm	M mm
HDK0.5D0.19B1	0.19	200	230	250	7000	1000	51	60	27.2
HDK0.5D0.26B1	0.26	200	230	250	7000	1000	51.5	60.5	27.5
HDK0.5D0.38B1	0.38	200	230	250	7000	1000	52.5	61.5	28
HDK0.5D0.50B1	0.50	200	230	250	7000	1000	53.5	62.5	28.5
HDK0.5D0.65B1	0.65	200	230	250	7000	1000	54.5	63.5	29
HDK0.5D0.75B1	0.75	200	230	250	7000	1000	55.5	64.5	29.5
HDK0.5D0.88B1	0.88	200	230	250	7000	1000	56.5	65.5	30
HDK0.5D1.00B1	1.00	200	230	250	6000	850	57.5	66.5	30.5
HDK0.5D1.25B1	1.25	200	230	250	5000	700	59.5	68.5	31.5
HDK0.5D1.50B1	1.50	200	230	250	4000	600	61.5	70.5	32.5
HDK0.5D1.75B1	1.75	180	210	230	4000	600	63.5	72.5	33.5
HDK0.5D2.00B1	2.00	160	190	210	3000	500	65.5	74.5	34.5

HDK0.5-B3



后盖：G1/4 螺纹深 11。

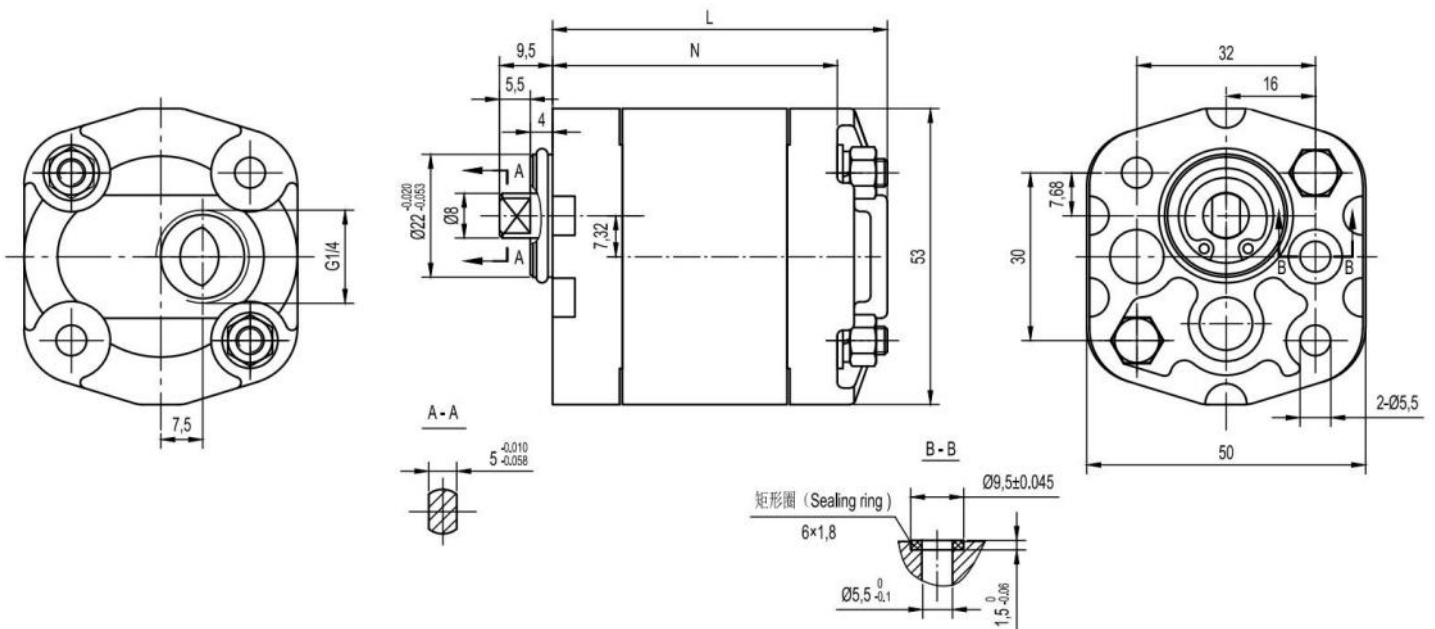
安装泵时，2 个 M5 的螺栓扭矩设定为 $5.4 \pm 0.5\text{Nm}$ 。

End cover : G1/4 thread depth 11.

To mount the pump , two M5 screws with A torque wrench setting fixed at $5.4 \pm 0.5\text{Nm}$.

进油口
INLET

出油口
OUTLET



规格 Type	排量 Displacement (cm ³ /rev)	最大压力 Max. pressure			最高转速 Max. speed (r/min)	最低转速 Min. speed (r/min)	尺寸 Dimensions	
		P1 bar	P2 bar	P3 bar			N mm	L mm
HDK0.5D0.19B3	0.19	200	230	250	7000	1000	51	60
HDK0.5D0.26B3	0.26	200	230	250	7000	1000	51.5	60.5
HDK0.5D0.38B3	0.38	200	230	250	7000	1000	52.5	61.5
HDK0.5D0.50B3	0.50	200	230	250	7000	1000	53.5	62.5
HDK0.5D0.65B3	0.65	200	230	250	7000	1000	54.5	63.5
HDK0.5D0.75B3	0.75	200	230	250	7000	1000	55.5	64.5
HDK0.5D0.88B3	0.88	200	230	250	7000	1000	56.5	65.5
HDK0.5D1.00B3	1.00	200	230	250	6000	850	57.5	66.5
HDK0.5D1.25B3	1.25	200	230	250	5000	700	59.5	68.5
HDK0.5D1.50B3	1.50	200	230	250	4000	600	61.5	70.5
HDK0.5D1.75B3	1.75	180	210	230	4000	600	63.5	72.5
HDK0.5D2.00B3	2.00	160	190	210	3000	500	65.5	74.5

HDK0.5-B5-VQ1

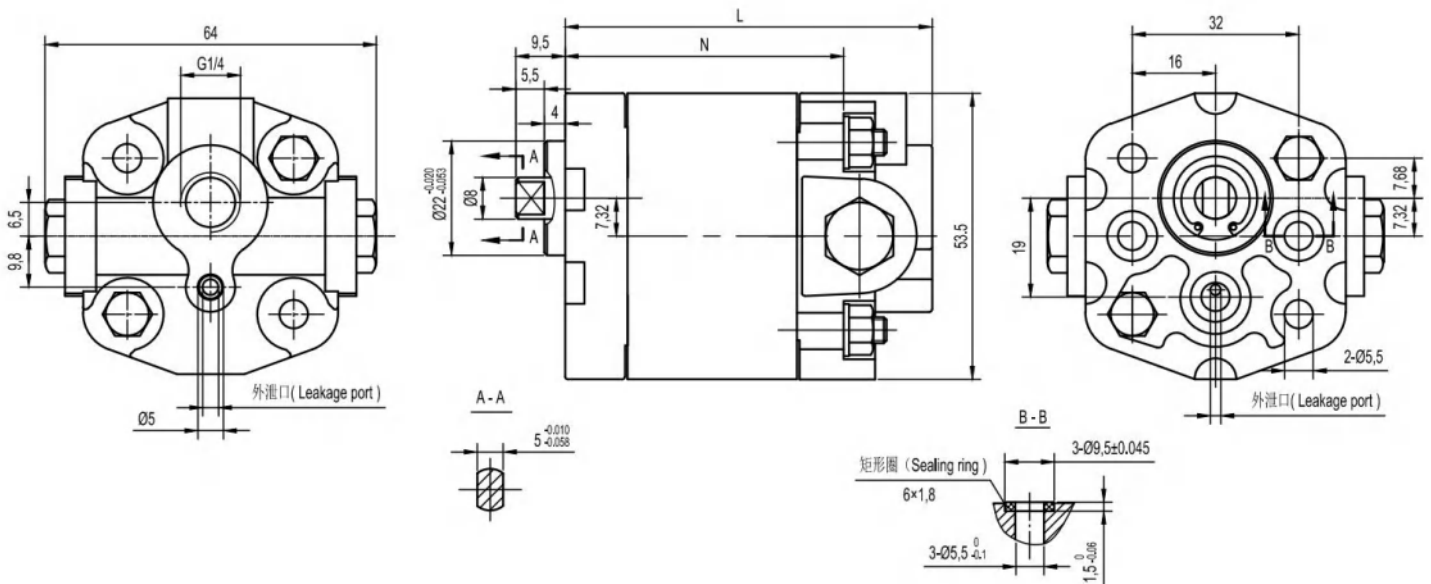


后盖：G1/4 螺纹深 9。

安装泵时，2 个 M5 的螺栓扭矩设定为 $5.4 \pm 0.5\text{Nm}$ 。

End cover : G1/4 thread depth 9.

To mount the pump , two M5 screws with A torque wrench setting fixed at $5.4 \pm 0.5\text{Nm}$.



规格 Type	排量 Displacement (cm ³ /rev)	最大压力 Max. pressure			最高转速 Max. speed (r/min)	最低转速 Min. speed (r/min)	尺寸 Dimensions	
		P1 bar	P2 bar	P3 bar			N mm	L mm
HDK0.5R0.19B5-VQ1	0.19	150	170	190	7000	1000	51	68
HDK0.5R0.26B5-VQ1	0.26	150	170	190	7000	1000	51.5	68.5
HDK0.5R0.38B5-VQ1	0.38	150	170	190	7000	1000	52.5	69.5
HDK0.5R0.50B5-VQ1	0.50	150	170	190	7000	1000	53.5	70.5
HDK0.5R0.65B5-VQ1	0.65	150	170	190	7000	1000	54.5	71.5
HDK0.5R0.75B5-VQ1	0.75	150	170	190	7000	1000	55.5	72.5
HDK0.5R0.88B5-VQ1	0.88	150	170	190	7000	1000	56.5	73.5
HDK0.5R1.00B5-VQ1	1.00	150	170	190	6000	850	57.5	74.5
HDK0.5R1.25B5-VQ1	1.25	150	170	190	5000	700	59.5	76.5
HDK0.5R1.50B5-VQ1	1.50	150	170	190	4000	600	61.5	78.5
HDK0.5R1.75B5-VQ1	1.75	150	170	190	4000	600	63.5	80.5
HDK0.5R2.00B5-VQ1	2.00	150	170	190	3000	500	65.5	82.5

HDK0.5-A1



2 个 G1/4 螺纹深 12。

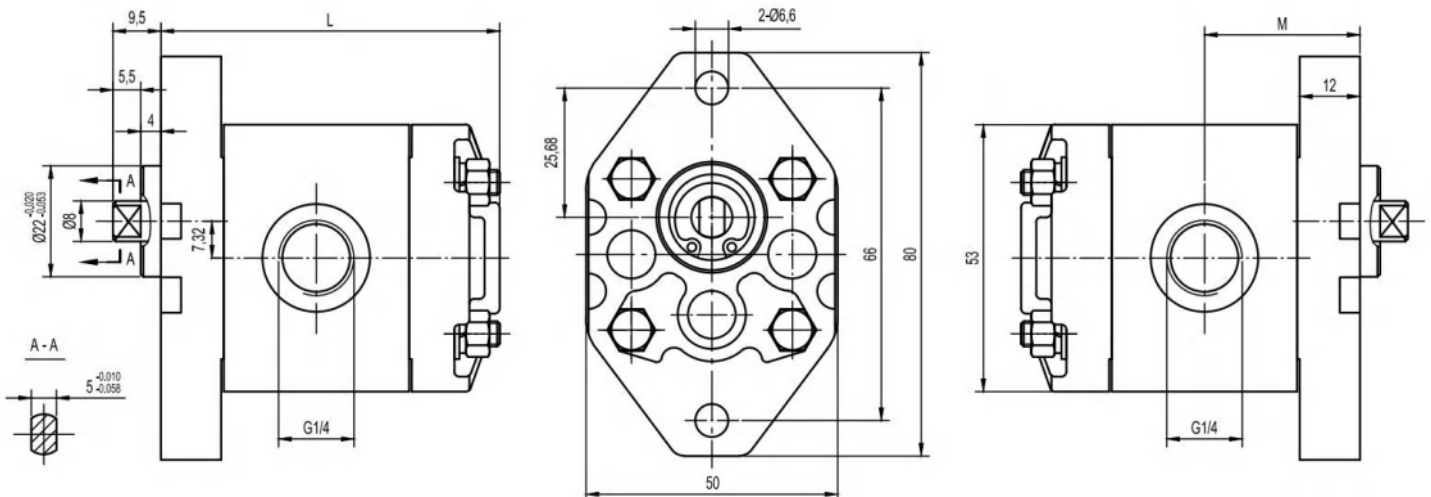
安装泵时，4 个 M5 的螺栓扭矩设定为 $5.4 \pm 0.5 \text{ Nm}$ 。

Two G1/4 threads depth 12.

To mount the pump , four M5 screws with A torque wrench setting fixed at $5.4 \pm 0.5 \text{ Nm}$.

出油口
OUTLET

进油口
INLET

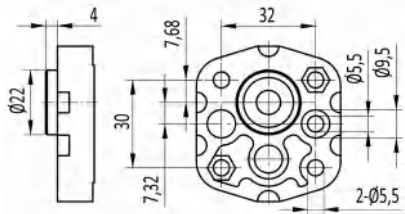


规格 Type	排量 Displacement (cm^3/rev)	最大压力 Max. pressure			最高转速 Max. speed (r/min)	最低转速 Min. speed (r/min)	尺寸 Dimensions	
		P1 bar	P2 bar	P3 bar			M mm	L mm
HDK0.5D0.19A1	0.19	200	230	250	7000	1000	60	27.2
HDK0.5D0.26A1	0.26	200	230	250	7000	1000	60.5	27.5
HDK0.5D0.38A1	0.38	200	230	250	7000	1000	61.5	28
HDK0.5D0.50A1	0.50	200	230	250	7000	1000	62.5	28.5
HDK0.5D0.65A1	0.65	200	230	250	7000	1000	63.5	29
HDK0.5D0.75A1	0.75	200	230	250	7000	1000	64.5	29.5
HDK0.5D0.88A1	0.88	200	230	250	7000	1000	65.5	30
HDK0.5D1.00A1	1.00	200	230	250	6000	850	66.5	30.5
HDK0.5D1.25A1	1.25	200	230	250	5000	700	68.5	31.5
HDK0.5D1.50A1	1.50	200	230	250	4000	600	70.5	32.5
HDK0.5D1.75A1	1.75	180	210	230	4000	600	72.5	33.5
HDK0.5D2.00A1	2.00	160	190	210	3000	500	74.5	34.5

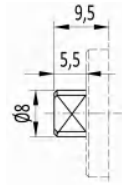
HDK0.5

前盖/Front COVER

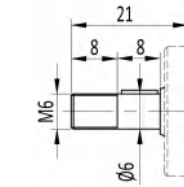
轴伸/SHAFTS



B0



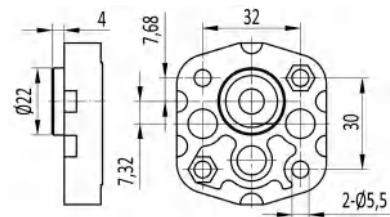
B



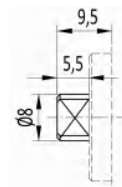
P3

最大扭矩
Max. Torque 10 Nm

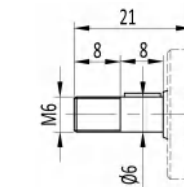
最大扭矩
Max. Torque 8 Nm



B1



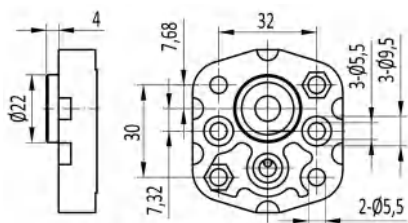
B



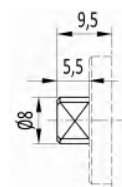
P3

最大扭矩
Max. Torque 10 Nm

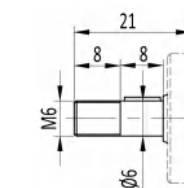
最大扭矩
Max. Torque 8 Nm



B2



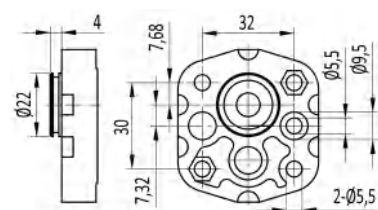
B



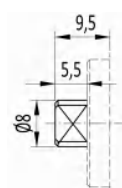
P3

最大扭矩
Max. Torque 10 Nm

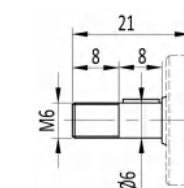
最大扭矩
Max. Torque 8 Nm



B3



B



P3

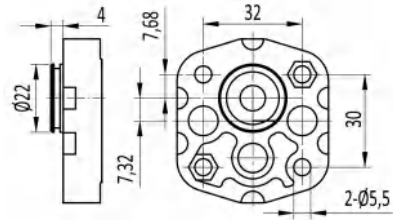
最大扭矩
Max. Torque 10 Nm

最大扭矩
Max. Torque 8 Nm

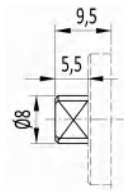
HDK0.5

前盖/FRONT COVER

轴伸/SHAFTS

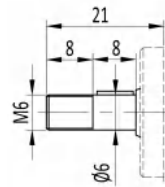


B4



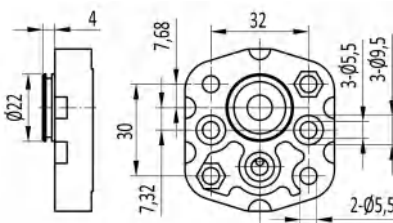
B

最大扭矩
Max. Torque 10 Nm

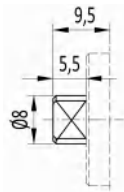


P3

最大扭矩
Max. Torque 8 Nm

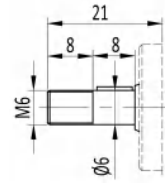


B5



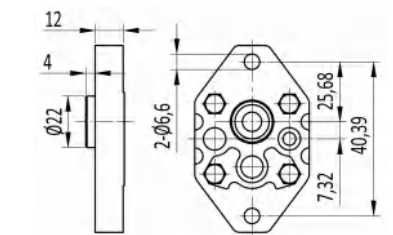
B

最大扭矩
Max. Torque 10 Nm

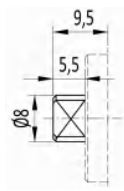


P3

最大扭矩
Max. Torque 8 Nm

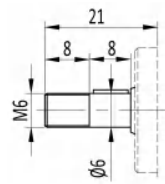


A0



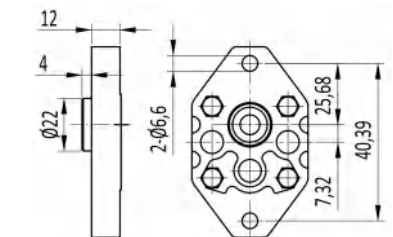
B

最大扭矩
Max. Torque 10 Nm

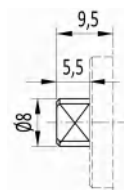


P3

最大扭矩
Max. Torque 8 Nm

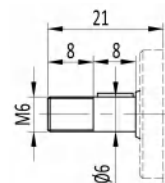


A1



B

最大扭矩
Max. Torque 10 Nm



P3

最大扭矩
Max. Torque 8 Nm

HDK0.5

油口/PORTS



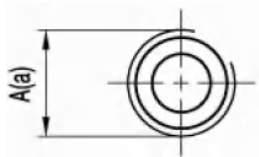
L2

规格 TYPE	进油口 INLET	出油口 OUTLET
	A	a
HDK0.5..0.19 ~ HDK0.5..2.00	G1/4	$\phi 5.5$



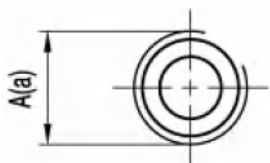
L17

规格 TYPE	进油口 INLET	出油口 OUTLET
	A	a
HDK0.5..0.19 ~ HDK0.5..2.00	NTP1/4	$\phi 5.5$



L18

规格 TYPE	进油口 INLET	出油口 OUTLET
	A	a
HDK0.5..0.19 ~ HDK0.5..2.00	M10×1	M10×1

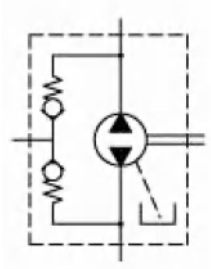


L0

规格 TYPE	进油口 INLET	出油口 OUTLET
	A	a
HDK0.5..0.19 ~ HDK0.5..2.00	G1/4	G1/4

HDK0.5

可选项/OPTIONS

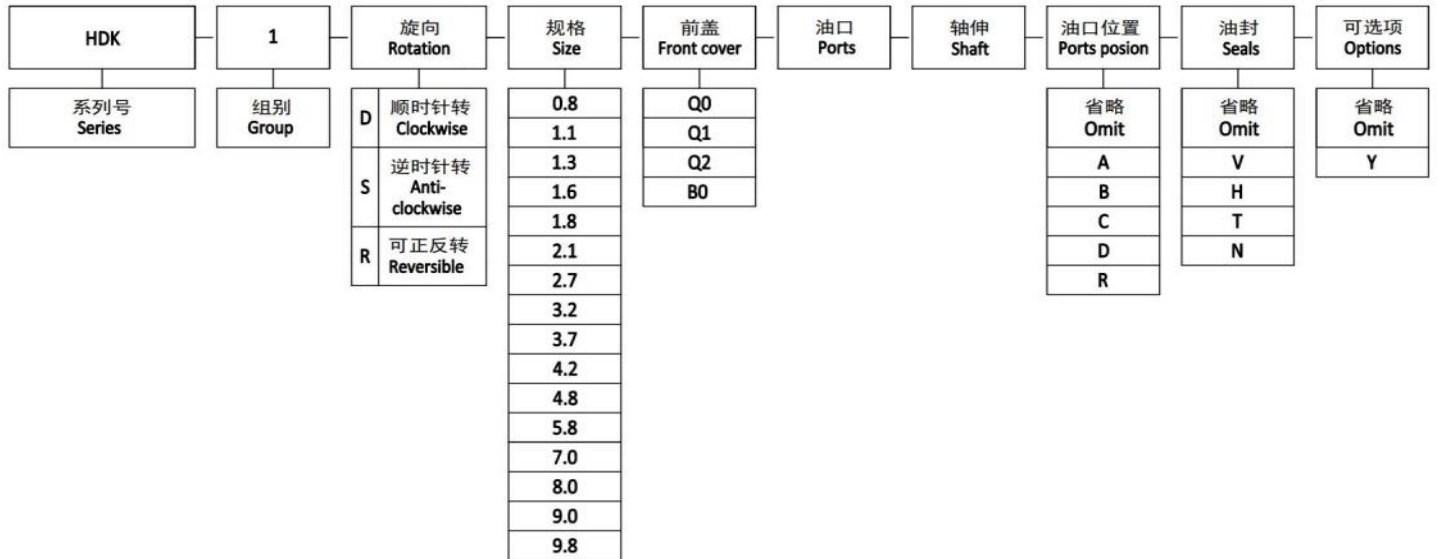


V

描述 DISCRPTION
方向阀外部泄油. Directional valve with external drain .

HDK1

如何订购/HOW TO ORDER



油口位置/Ports position

省略 - 侧进侧出
A - 前进前出
B - 后进前出
C - 后进侧出
D - 侧进后出
R - 后进后出

Omit - Side inlet and side outlet .
A - Front inlet and front outlet .
B - Back inlet and front outlet .
C - Back inlet and side outlet .
D - Side inlet and back outlet .
R - Back inlet and back outlet .

油封/Seals

省略 - 温度范围在-10°C~+80°C, 进油口最高绝对压力为3bar。
V - 适用于高温介质, 温度范围在-10°C~+120°C。
H - 适用于低温介质, 温度范围在-40°C~+120°C。
T - 适用于进油口最大绝对压力3~6bar。
N - 适用于进油口最大绝对压力3~6bar。

Omit - Range between -10°C and +80°C, inlet pressure up to max. 3 bar absolute .
V - Version suitable for fluid at hi-temperatures, range between -10°C and +120°C.
H - Version suitable for fluid at low-temperatures, range between -40°C and +80°C.
T - Version suitable for inlet pressure up to max. 3 and 6 bar absolute.
N - Version suitable for inlet pressure up to max. 3 and 10 bar absolute .

可选项/Options

省略 - 没有阀。
Y - 压力安全阀。

Omit - Have no valve .
Y - Pressure relief valve .

范例/Examples

HDK1D3.2Q0L1B-B = HDK 系列, 1 组, 右旋, 3.2cc/rev 排量, Q0 前盖, L1 油口, B 扁键轴伸, 后进前出, 标准油封。

HDK1D3.2Q0L1B-B = HDK series, 1 group pump, Clockwise, 3.2 cc/rev, Q0 front cover, L1 ports, B shaft, back inlet and front outlet, standard seal.

HDK1-Q0



后盖：G3/8 螺纹深 12。

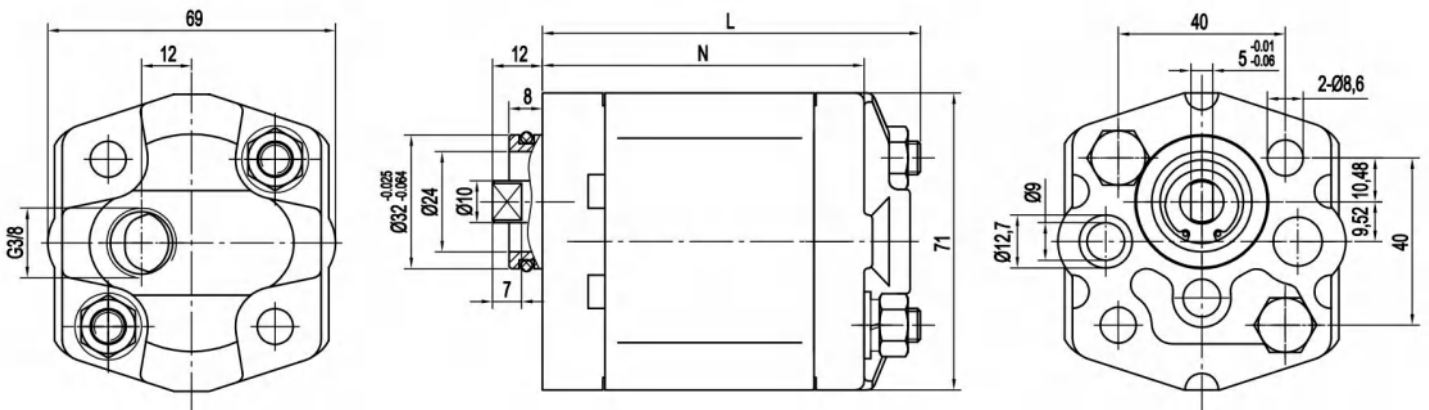
安装泵时，2 个 M8 的螺栓扭矩设定为 $27 \pm 3\text{Nm}$ 。

End cover : G3/8 thread depth 12.

To mount the pump , two M8 screws with a torque wrench setting fixed at $27 \pm 3\text{Nm}$.

进油口
INLET

出油口
OUTLET



规格 Type	排量 Displacement (cm ³ /rev)	最大压力 Max. pressure			最高转速 Max. speed (r/min)	最低转速 Min. speed (r/min)	尺寸 Dimensions	
		P1 bar	P2 bar	P3 bar			N mm	L mm
HDK1S0.8Q0	0.8	210	240	270	6000	1000	62.6	76
HDK1S1.1Q0	1.1	210	240	270	6000	1000	63	76.5
HDK1S1.3Q0	1.3	210	240	270	6000	1000	64	77.5
HDK1S1.6Q0	1.6	210	240	270	6000	1000	65	78.5
HDK1S1.8Q0	1.8	210	240	270	6000	1000	66	79.5
HDK1S2.1Q0	2.1	210	240	270	6000	1000	67	80.5
HDK1S2.7Q0	2.7	210	240	270	6000	1000	69	82.5
HDK1S3.2Q0	3.2	210	240	270	5000	800	71	84.5
HDK1S3.7Q0	3.7	210	240	270	4000	800	73	86.5
HDK1S4.2Q0	4.2	210	240	270	4000	800	75	88.5
HDK1S4.8Q0	4.8	200	225	250	3500	600	77	90.5
HDK1S5.8Q0	5.8	190	210	230	3000	600	81	94.5
HDK1S7.0Q0	7.0	160	180	200	2500	600	85	98.5
HDK1S8.0Q0	8.0	160	180	200	2100	600	89	102.5
HDK1S9.0Q0	9.0	120	130	140	1500	600	93	106
HDK1S9.8Q0	9.8	110	120	130	1500	600	96	109.3

HDK1-Q1



4 个 M6 螺纹深 12。

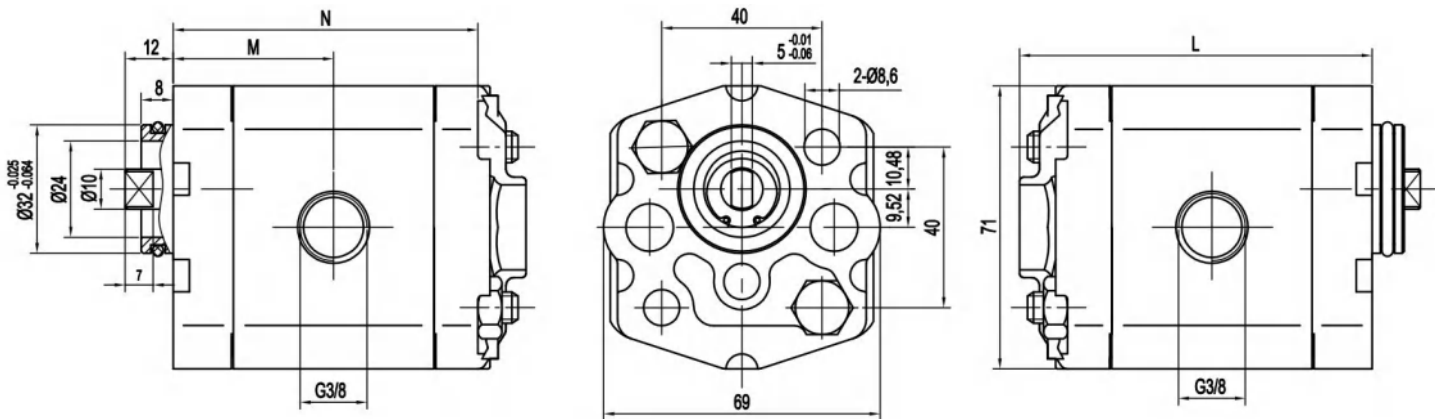
安装泵时，2 个 M8 的螺栓扭矩设定为 $27 \pm 3\text{Nm}$ 。

Four M6 threads depth 12.

To mount the pump , two M8 screws with a torque wrench setting fixed at $27 \pm 3\text{Nm}$.

出油口
OUTLET

进油口
INLET



规格 Type	排量 Displacement	最大压力 Max. pressure			最高转速 Max. speed	最低转速 Min. speed	尺寸 Dimensions		
		P1	P2	P3			M	N	L
	(cm ³ /rev)	bar	bar	bar	(r/min)	(r/min)	mm	mm	mm
HDK1S0.8Q2	0.8	210	240	270	6000	1000	32.8	62.6	76
HDK1S1.1Q2	1.1	210	240	270	6000	1000	33	63	76.5
HDK1S1.3Q2	1.3	210	240	270	6000	1000	33.6	64	77.5
HDK1S1.6Q2	1.6	210	240	270	6000	1000	34	65	78.5
HDK1S1.8Q2	1.8	210	240	270	6000	1000	34.6	66	79.5
HDK1S2.1Q2	2.1	210	240	270	6000	1000	35	67	80.5
HDK1S2.7Q2	2.7	210	240	270	6000	1000	36	69	82.5
HDK1S3.2Q2	3.2	210	240	270	5000	800	37	71	84.5
HDK1S3.7Q2	3.7	210	240	270	4000	800	38	73	86.5
HDK1S4.2Q2	4.2	210	240	270	4000	800	39	75	88.5
HDK1S4.8Q2	4.8	200	225	250	3500	600	40	77	90.5
HDK1S5.8Q2	5.8	190	210	230	3000	600	42	81	94.5
HDK1S7.0Q2	7.0	160	180	200	2500	600	44	85	98.5
HDK1S8.0Q2	8.0	160	180	200	2100	600	46	89	102.5
HDK1S9.0Q2	9.0	120	130	140	1500	600	47.8	93	106
HDK1S9.8Q2	9.8	110	120	130	1500	600	49.4	96	109.3

HDK1-Q2

两个 G3/8 螺纹深 12。

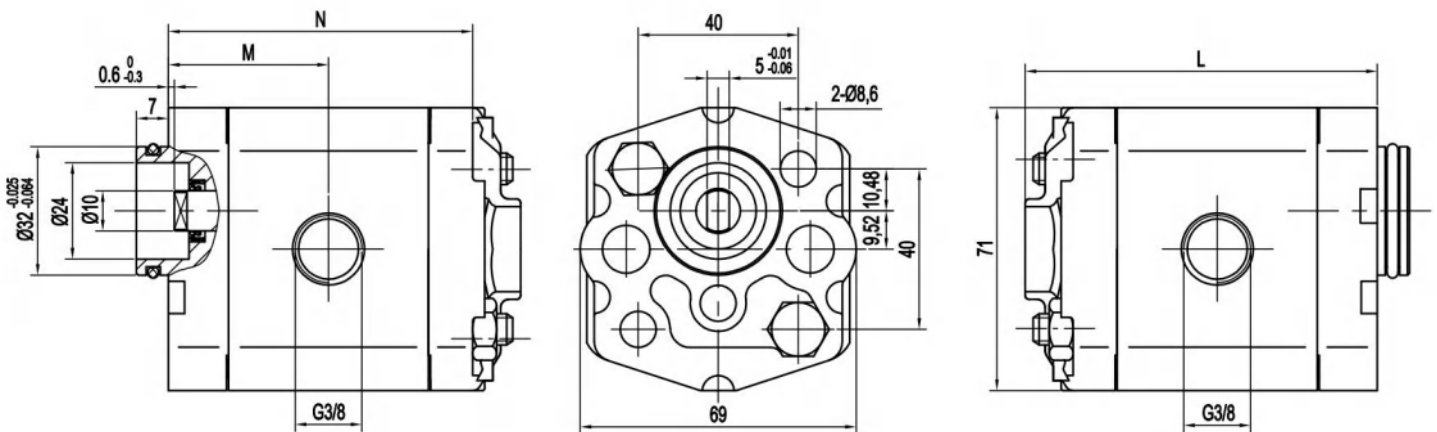
安装泵时，2 个 M8 的螺栓扭矩设定为 $27 \pm 3\text{Nm}$ 。

Two G3/8 thread depth 12.

To mount the pump, two M8 screws with a torque wrench setting fixed at $27 \pm 3\text{Nm}$.

进油口
INLET

出油口
OUTLET



规格 Type	排量 Displacement (cm ³ /rev)	最大压力 Max. pressure			最高转速 Max. speed (r/min)	最低转速 Min. speed (r/min)	尺寸 Dimensions		
		P1 bar	P2 bar	P3 bar			M mm	N mm	L mm
HDK1S0.8Q2	0.8	210	240	270	6000	1000	32.8	62.6	76
HDK1S1.1Q2	1.1	210	240	270	6000	1000	33	63	76.5
HDK1S1.3Q2	1.3	210	240	270	6000	1000	33.6	64	77.5
HDK1S1.6Q2	1.6	210	240	270	6000	1000	34	65	78.5
HDK1S1.8Q2	1.8	210	240	270	6000	1000	34.6	66	79.5
HDK1S2.1Q2	2.1	210	240	270	6000	1000	35	67	80.5
HDK1S2.7Q2	2.7	210	240	270	6000	1000	36	69	82.5
HDK1S3.2Q2	3.2	210	240	270	5000	800	37	71	84.5
HDK1S3.7Q2	3.7	210	240	270	4000	800	38	73	86.5
HDK1S4.2Q2	4.2	210	240	270	4000	800	39	75	88.5
HDK1S4.8Q2	4.8	200	225	250	3500	600	40	77	90.5
HDK1S5.8Q2	5.8	190	210	230	3000	600	42	81	94.5
HDK1S7.0Q2	7.0	160	180	200	2500	600	44	85	98.5
HDK1S8.0Q2	8.0	160	180	200	2100	600	46	89	102.5
HDK1S9.0Q2	9.0	120	130	140	1500	600	47.8	93	106
HDK1S9.8Q2	9.8	110	120	130	1500	600	49.4	96	109.3

HDK1-B0



4 个 M6 螺纹深 12。

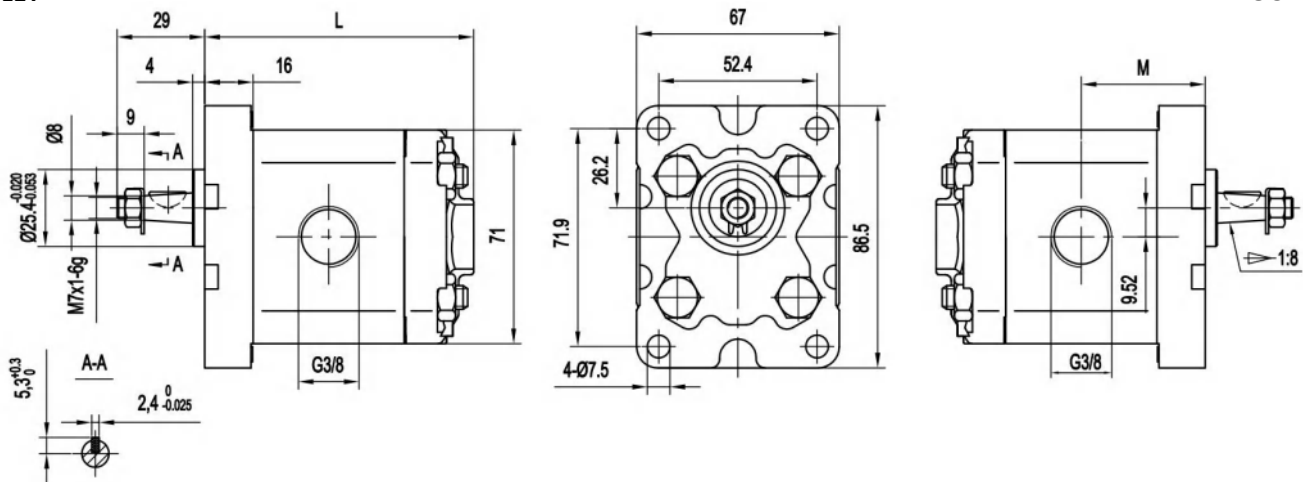
安装泵时，4 个 M8 的螺栓扭矩设定为 $27 \pm 3\text{Nm}$ 。

Four M6 thread depth 12.

To mount the pump , four M8 screws with a torque wrench setting fixed at $27 \pm 3\text{Nm}$.

进油口
INLET

出油口
OUTLET

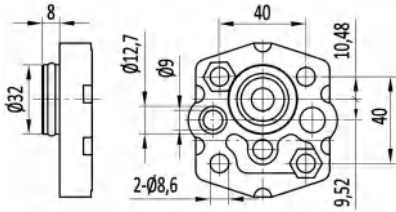


规格 Type	排量 Displacement (cm ³ /rev)	最大压力 Max. pressure			最高转速 Max. speed (r/min)	最低转速 Min. speed (r/min)	尺寸 Dimensions	
		P1 bar	P2 bar	P3 bar			M mm	L mm
HDK1S0.8B0	0.8	210	240	270	6000	1000	33.8	77
HDK1S1.1B0	1.1	210	240	270	6000	1000	34	77.5
HDK1S1.3B0	1.3	210	240	270	6000	1000	34.6	78.5
HDK1S1.6B0	1.6	210	240	270	6000	1000	35	79.5
HDK1S1.8B0	1.8	210	240	270	6000	1000	35.6	80.5
HDK1S2.1B0	2.1	210	240	270	6000	1000	36	81.5
HDK1S2.7B0	2.7	210	240	270	6000	1000	37	83.5
HDK1S3.2B0	3.2	210	240	270	5000	800	38	85.5
HDK1S3.7B0	3.7	210	240	270	4000	800	39	87.5
HDK1S4.2B0	4.2	210	240	270	4000	800	40	89.5
HDK1S4.8B0	4.8	200	225	250	3500	600	41	91.5
HDK1S5.8B0	5.8	190	210	230	3000	600	43	95.5
HDK1S7.0B0	7.0	160	180	200	2500	600	45	99.5
HDK1S8.0B0	8.0	160	180	200	2100	600	47	103.5
HDK1S9.0B0	9.0	120	130	140	1500	600	48.8	107
HDK1S9.8B0	9.8	110	120	130	1500	600	50.4	110.3

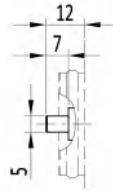
HDK1

前盖/Front COVER

轴伸/SHAFTS

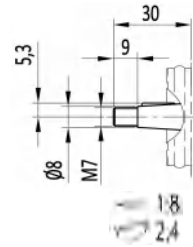


Q0



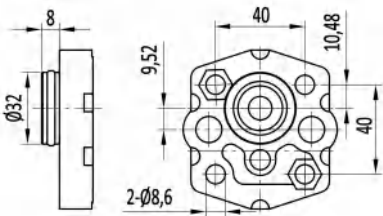
B

最大扭矩
Max. Torque 20 Nm

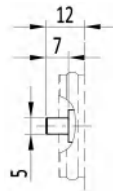


Z

最大扭矩
Max. Torque 25 Nm

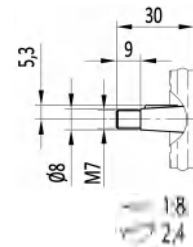


Q1



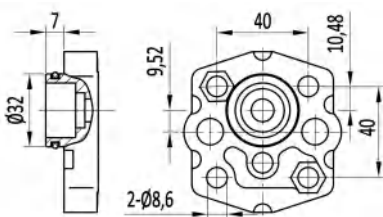
B

最大扭矩
Max. Torque 20 Nm

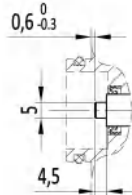


Z

最大扭矩
Max. Torque 25 Nm

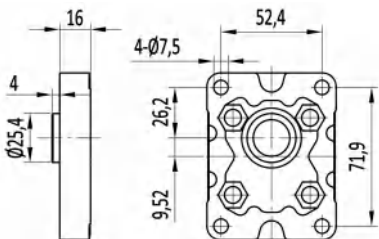


Q2

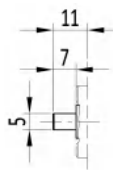


B1

最大扭矩
Max. Torque 20 Nm

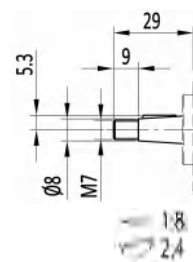


B0



B

最大扭矩
Max. Torque 20 Nm



Z

最大扭矩
Max. Torque 25 Nm

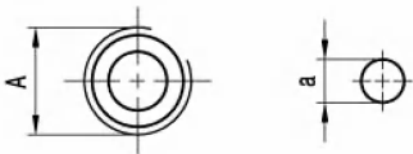
HDK1

油口/PORTS



L1

规格 TYPE	进油口 INLET	出油口 OUTLET
	A	a
HDK1..0.8 ~ HDK1..9.8	G3/8	Φ9



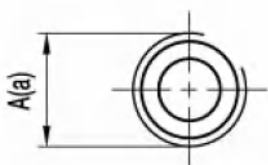
L2

规格 TYPE	进油口 INLET	出油口 OUTLET
	A	a
HDK1..0.8 ~ HDK1..9.8	G1/4	Φ9



L8

规格 TYPE	进油口 INLET	出油口 OUTLET
	A	a
HDK1..0.8 ~ HDK1..9.8	NPT3/8	Φ9

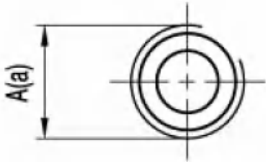


L3

规格 TYPE	进油口 INLET	出油口 OUTLET
	A	a
HDK1..0.8 ~ HDK1..9.8	G3/8	G1/4

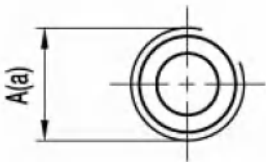
HDK1

油口/PORTS



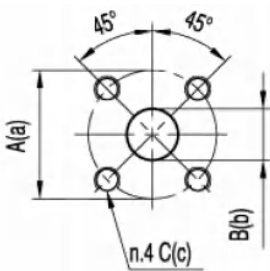
L4

规格 TYPE	进油口 INLET	出油口 OUTLET
	A	a
HDK1..0.8 ~ HDK1..9.8	G3/8	G3/8



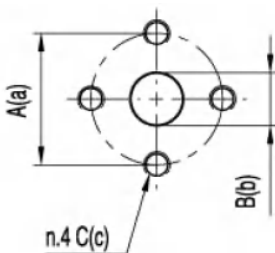
L23

规格 TYPE	进油口 INLET	出油口 OUTLET
	A	a
HDK1..0.8 ~ HDK1..9.8	M18X1.5	M14X1.5



F1

规格 TYPE	进油口 INLET			出油口 OUTLET		
	A	B	C	a	b	c
KAP1..0.8 ~ KAP1..8.0	φ 30	φ 12	M6	φ 30	φ 12	M6

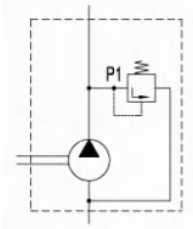


F8

规格 TYPE	进油口 INLET			出油口 OUTLET		
	A	B	C	a	b	c
KAP1..1.6 ~ KAP1..8.0	φ 30	φ 12	M6	φ 30	φ 12	M6

HDK1

可选项/OPTIONS

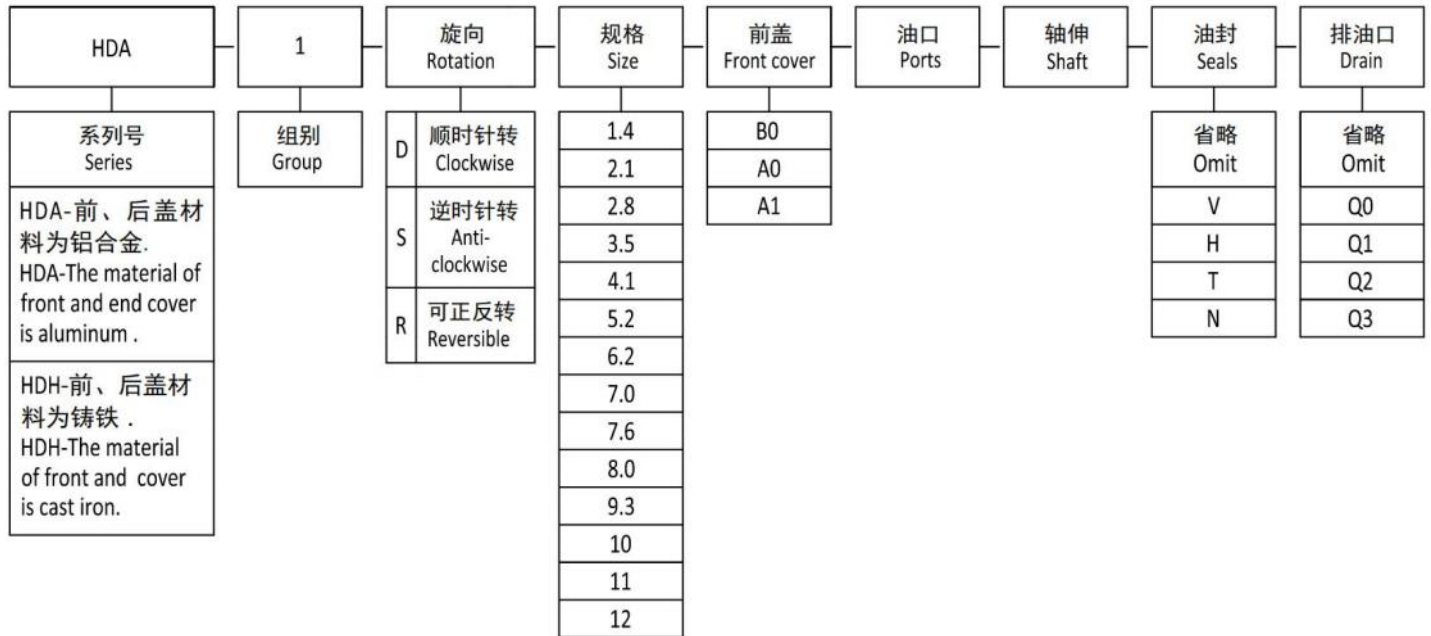


Y

描述 DISCRIPTION
<p>内部泄油压力安全阀；设定压力 5 ~ 200bar. Pressure relief valve with internal drain ; setting pressure between 5 and 200 bar .</p>

HDA1[HDH1]

如何订购/HOW TO ORDER



油封/ Seals

省略 - 温度范围在-10°C~+80°C, 进油口最高绝对压力为 3bar。

Omit - Range between -10°C and +80°C, inlet pressure up to max. 3 bar absolute.

V - 适用于高温介质, 温度范围在-10°C~+120°C。

V - Version suitable for fluid at hi-temperatures, range between -10°C and +120°C.

H - 适用于低温介质, 温度范围在-40°C~+120°C。

H - Version suitable for fluid at low-temperatures, range between -40°C and +80°C.

T - 适用于进油口最大绝对压力 3~6bar。

T - Version suitable for inlet pressure up to max. 3 and 6 bar absolute.

N - 适用于进油口最大绝对压力 3~6bar。

N - Version suitable for inlet pressure up to max. 3 and 10 bar absolute.

排油口/Drain

省略 - 没有排油口。

Omit - Have no drain .

Q0 - 内部排油口。

Q0 - Internal drain .

Q1 - 外部排油口 G1/4。

Q1 - External drain G1/4.

Q2 - 外部排油口 7/16-20 UNF。

Q2 - External drain 7/16-20 UNF.

Q3 - 外部排油口 9/16-18 UNF。

Q3 - External drain 19/16-18 UNF.

范例/Examples

HDA1D5.2A0L9P1 = HDA 系列, 1 组, 右旋, 5.2cc/rev 排量, A0 前盖, L9 油口, P1 轴伸, 侧进侧出, 标准油封。

HDA1D5.2A0L9P1 = HDA series, 1 group pump, Clockwise, 5.2 cc/rev, A0 front cover, L9 ports, P1 shaft, Side inlet and side outlet, standard seal.

HDA1-A0

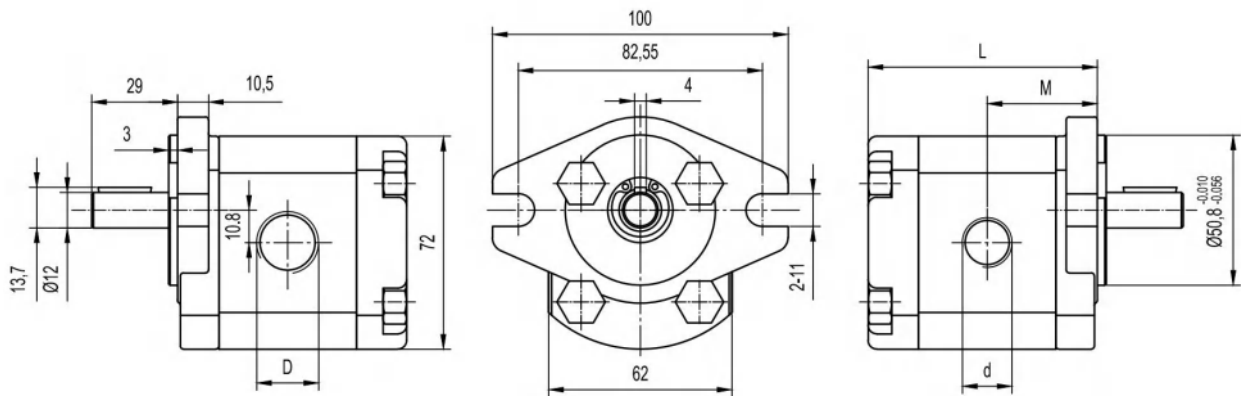


安装泵时，4 个 M8 的螺栓扭矩设定为 $27 \pm 3\text{Nm}$ 。

To mount the pump , four M8 screws with a torque wrench setting fixed at $27 \pm 3\text{Nm}$.

进油口
INLET

出油口
OUTLET



规格 Type	排量 Displacement (cm^3/rev)	最大压力 Max. pressure			最高转速 Max. speed (r/min)	最低转速 Min. speed (r/min)	尺寸 Dimensions			
		P1 bar	P2 bar	P3 bar			M mm	L mm	D	d
HDA1S1.4A0	1.4	200	225	250	6000	800	35.75	74.5	PT3/8	PT3/8
HDA1S2.1A0	2.1	200	225	250	6000	800	37.25	77.5	PT3/8	PT3/8
HDA1S2.8A0	2.8	200	225	250	5000	800	38.5	80	PT3/8	PT3/8
HDA1S3.5A0	3.5	200	225	250	5000	800	39.75	82.5	PT3/8	PT3/8
HDA1S4.1A0	4.1	200	225	250	4000	800	41	85	PT3/8	PT3/8
HDA1S5.2A0	5.2	200	225	250	4000	800	43	89	PT3/8	PT3/8
HDA1S6.2A0	6.2	200	225	250	3000	800	45	93	PT3/8	PT3/8
HDA1S7.0A0	7.0	180	205	230	3000	800	46.5	96	PT1/2	PT3/8
HDA1S7.6A0	7.6	180	205	230	3000	600	47.75	98.5	PT1/2	PT3/8
HDA1S8.0A0	8.0	160	180	200	2500	600	48.5	100	PT1/2	PT3/8
HDA1S9.3A0	9.3	160	180	200	2500	600	51	105	PT1/2	PT3/8
HDA1S10A0	10	160	180	200	2500	600	52.3	107.6	PT1/2	PT3/8
HDA1S11A0	11	150	165	180	2200	600	54.3	114.5	PT1/2	PT3/8
HDA1S12A0	12	140	155	170	2200	600	56.3	115.4	PT1/2	PT3/8

HDH1-A1

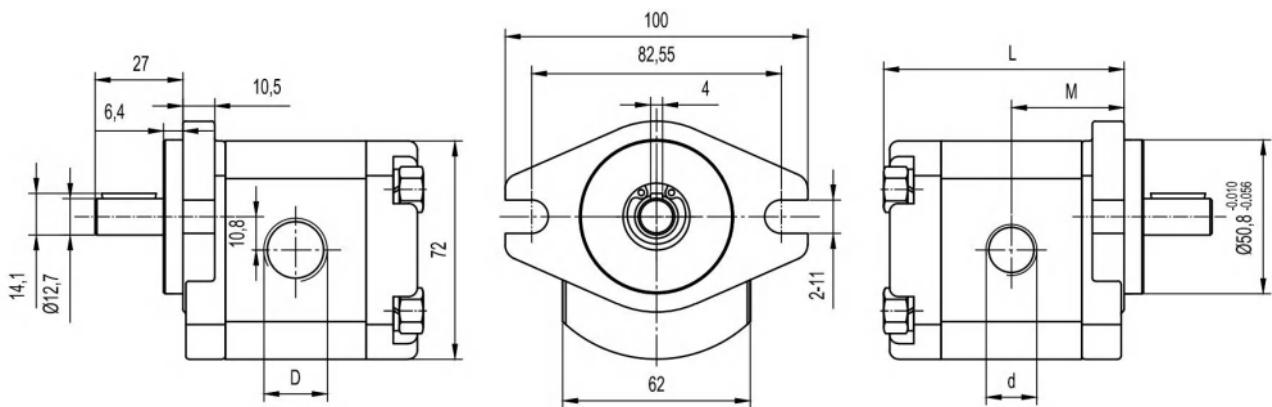


安装泵时，4 个 M8 的螺栓扭矩设定为 $27 \pm 3\text{Nm}$ 。

To mount the pump , four M8 screws with a torque wrench setting fixed at $27 \pm 3\text{Nm}$.

进油口
INLET

出油口
OUTLET



规格 Type	排量 Displacement (cm ³ /rev)	最大压力 Max. pressure			最高转速 Max. speed (r/min)	最低转速 Min. speed (r/min)	尺寸 Dimensions			
		P1 bar	P2 bar	P3 bar			M mm	L mm	D	d
HDH1S1.4A1	1.4	200	225	250	6000	800	35.75	76.5	G3/8	G3/8
HDH1S2.1A1	2.1	200	225	250	6000	800	37.25	79.5	G3/8	G3/8
HDH1S2.8A1	2.8	200	225	250	5000	800	38.5	82	G3/8	G3/8
HDH1S3.5A1	3.5	200	225	250	5000	800	39.75	84.5	G3/8	G3/8
HDH1S4.1A1	4.1	200	225	250	4000	800	41	87	G3/8	G3/8
HDH1S5.2A1	5.2	200	225	250	4000	800	43	91	G3/8	G3/8
HDH1S6.2A1	6.2	200	225	250	3000	800	45	95	G3/8	G3/8
HDH1S7.0A1	7.0	180	205	230	3000	800	46.5	98	G1/2	G3/8
HDH1S7.6A1	7.6	180	205	230	3000	600	47.75	100.5	G1/2	G3/8
HDH1S8.0A1	8.0	160	180	200	2500	600	48.5	102	G1/2	G3/8
HDH1S9.3A1	9.3	160	180	200	2500	600	51	107	G1/2	G3/8
HDH1S10A1	10	160	180	200	2500	600	52.3	109.6	G1/2	G3/8
HDH1S11A1	11	150	165	180	2200	600	54.3	116.5	G1/2	G3/8
HDH1S12A1	12	140	155	170	2200	600	56.3	117.4	G1/2	G3/8

HDH1-B0

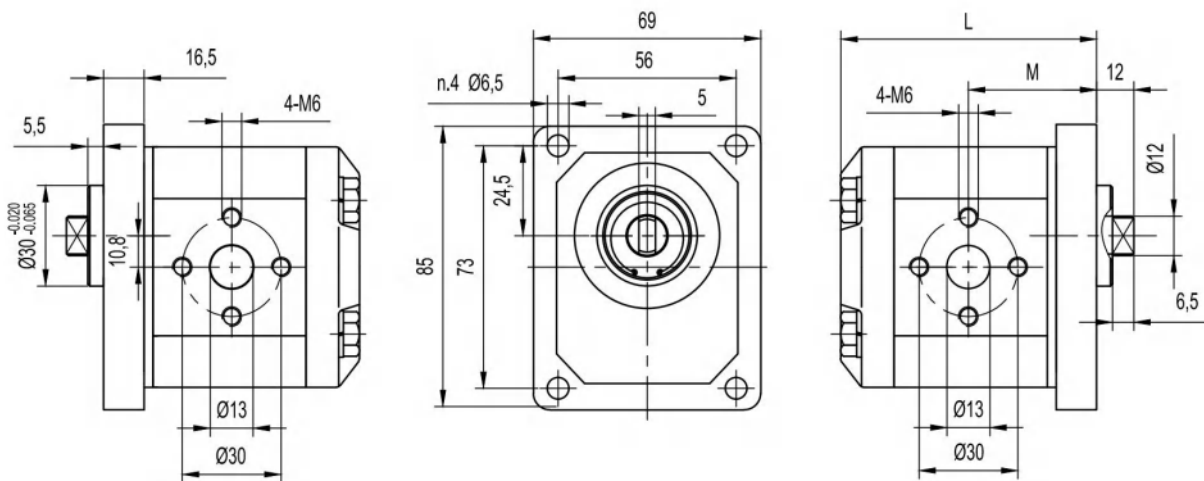


安装泵时，4 个 M8 的螺栓扭矩设定为 $27 \pm 3\text{Nm}$ 。

To mount the pump , four M8 screws with a torque wrench setting fixed at $27 \pm 3\text{Nm}$.

出油口
OUTLET

进油口
INLET

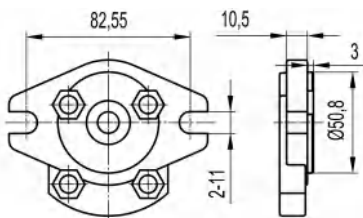


规格 Type	排量 Displacement (cm ³ /rev)	最大压力 Max. pressure			最高转速 Max. speed (r/min)	最低转速 Min. speed (r/min)	尺寸 Dimensions	
		P1 bar	P2 bar	P3 bar			M mm	L mm
HDH1D1.4B0	1.4	200	225	250	6000	800	41.75	82.5
HDH1D2.1B0	2.1	200	225	250	6000	800	43.25	85.5
HDH1D2.8B0	2.8	200	225	250	5000	800	44.5	88
HDH1D3.5B0	3.5	200	225	250	5000	800	45.75	90.5
HDH1D4.1B0	4.1	200	225	250	4000	800	47	93
HDH1D5.2B0	5.2	200	225	250	4000	800	49	97
HDH1D6.2B0	6.2	200	225	250	3000	800	51	101
HDH1D7.0B0	7.0	180	205	230	3000	800	52.5	104
HDH1D7.6B0	7.6	180	205	230	3000	600	53.75	106.5
HDH1D8.0B0	8.0	160	180	200	2500	600	54.5	108
HDH1D9.3B0	9.3	160	180	200	2500	600	57	113
HDH1D10B0	10	160	180	200	2500	600	58.3	115.6
HDH1D11B0	11	150	165	180	2200	600	60.3	122.5
HDH1D12B0	12	140	155	170	2200	600	62.3	123.4

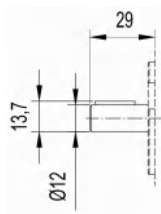
HDA1[HDH1]

前盖/FRONT COVER

轴伸/SHAFTS



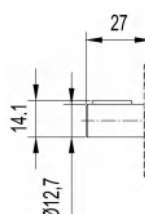
A0



4

P1

最大扭矩 70 Nm
Max. Torque



3,18

P6

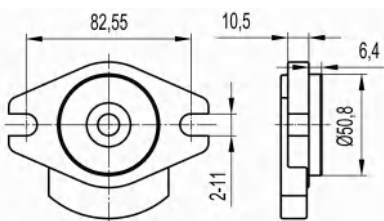
最大扭矩 59 Nm
Max. Torque



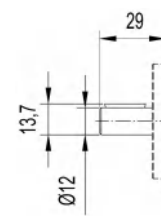
DP20/40-30° -9T

S6

最大扭矩 98 Nm
Max. Torque



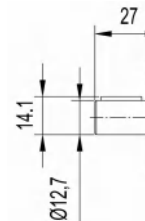
A1



4

P1

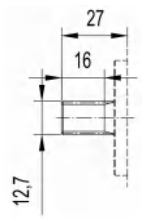
最大扭矩 70 Nm
Max. Torque



3,18

P6

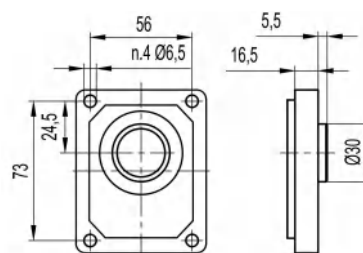
最大扭矩 59 Nm
Max. Torque



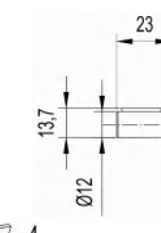
DP20/40-30° -9T

S6

最大扭矩 98 Nm
Max. Torque



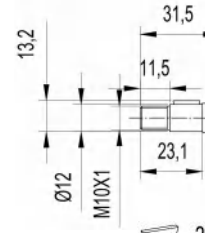
B0



4

P1

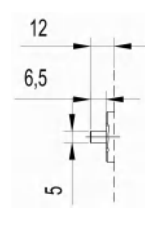
最大扭矩 70 Nm
Max. Torque



3

P41

最大扭矩 55 Nm
Max. Torque

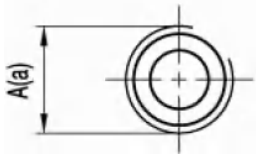


B

最大扭矩 45 Nm
Max. Torque

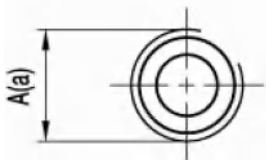
HDA1[HDH1]

油口/PORTS



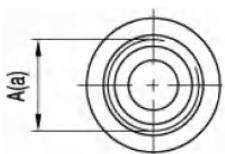
L4/L15

规格 TYPE	代号 CODE	进油口 INLET	出油口 OUTLET
		A	a
HDA[H]1..1.4 ~ HDA[H]1..6.2	L4	G3/8	G3/8
HDA[H]1..7.0 ~ HDA[H]1..12	L15	G3/4	G1/2



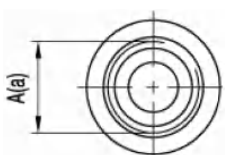
L9/L5

规格 TYPE	代号 CODE	进油口 INLET	出油口 OUTLET
		A	a
HDA[H]1..1.4 ~ HDA[H]1..6.2	L9	PT3/8	PT3/8
HDA[H]1..7.0 ~ HDA[H]1..12	L5	PT1/2	PT3/8



L19/L20

规格 TYPE	代号 CODE	进油口 INLET	出油口 OUTLET
		A	a
HDA[H]1..1.4 ~ HDA[H]1..6.2	L19	3/4-16UNF	9/16-18UNF
HDA[H]1..7.0 ~ HDA[H]1..12	L20	7/8-14UNF	3/4-16UNF

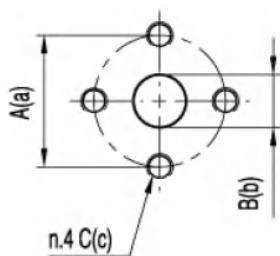


L21/L22

规格 TYPE	代号 CODE	进油口 INLET	出油口 OUTLET
		A	a
HDA[H]1..1.4 ~ HDA[H]1..6.2	L21	M18X1.5	M18X1.5
HDA[H]1..7.0 ~ HDA[H]1..12	L22	M20X1.5	M18X1.5

HDA1[HDH1]

油口/PORTS

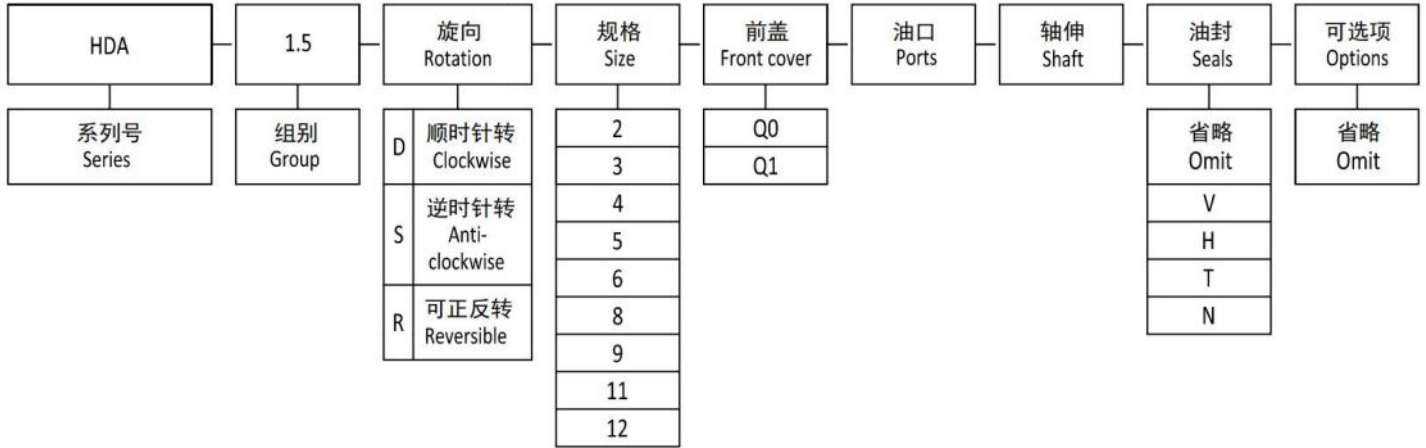


F8

规格 TYPE	进油口 INLET			出油口 OUTLET		
	A	B	C	a	b	c
HDA[H]1..1.4 ~ HDA[H]1..12	φ 30	φ 12	M6	φ 30	φ 12	M6

HDA1.5

如何订购/HOW TO ORDER



油封/ Seals

省略 - 温度范围在-10°C~+80°C, 进油口最高绝对压力为 3bar。

V - 适用于高温介质, 温度范围在-10°C~+120°C。

H - 适用于低温介质, 温度范围在-40°C~+120°C。

T - 适用于进油口最大绝对压力 3~6bar。

N - 适用于进油口最大绝对压力 3~6bar。

Omit - Range between -10°C and +80°C, inlet pressure up to max. 3 bar absolute.

V - Version suitable for fluid at hi-temperatures, range between -10°C and +120°C.

H - Version suitable for fluid at low-temperatures, range between -40°C and +80°C.

T - Version suitable for inlet pressure up to max. 3 and 6 bar absolute.

N - Version suitable for inlet pressure up to max. 3 and 10 bar absolute.

范例/Examples

HDA1.5D5Q0FP2 = HDA 系列, 1.5 组, 右旋, 5cc/rev 排量, Q0 前盖, F 油口, P2 轴伸, 侧进侧出, 标准油封。

HDA1.5D5Q0FP2 = HDA series, 1.5 group pump, Clockwise, 5 cc/rev, Q0 front cover, F ports, P2 shaft, Side inlet and side outlet, standard seal.

HDA1.5-Q0

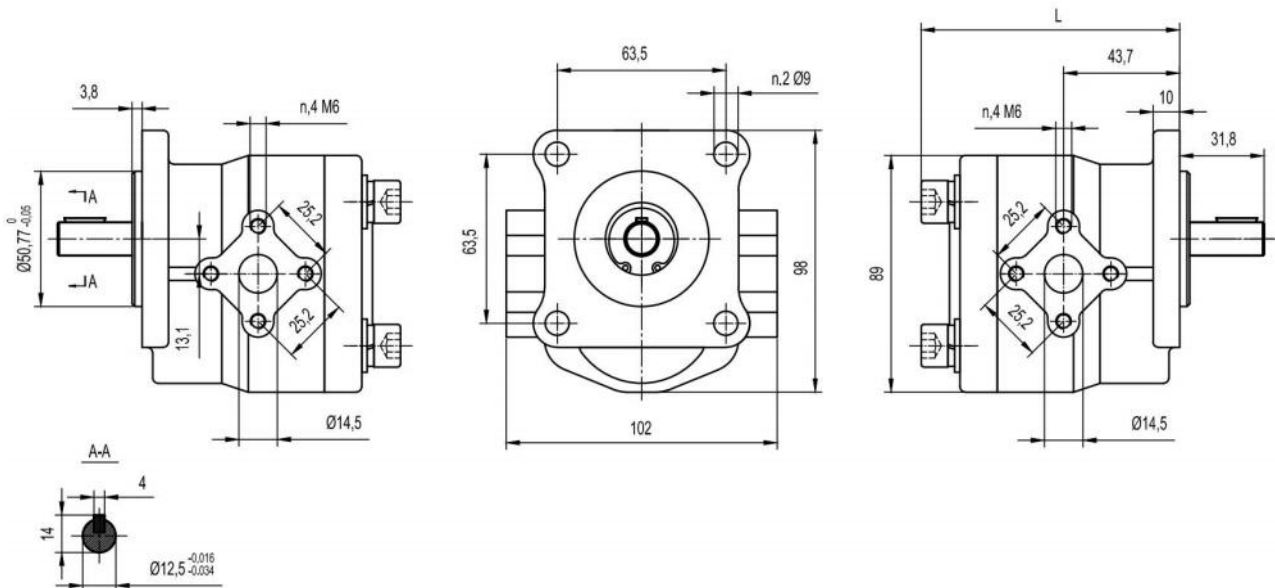


安装泵时，4 个 M8 的螺栓扭矩设定为 $27 \pm 3\text{Nm}$ 。

To mount the pump , four M8 screws with a torque wrench setting fixed at $27 \pm 3\text{Nm}$.

出油口
OUTLET

进油口
INLET



规格 Type	排量 Displacement (cm ³ /rev)	最大压力 Max. pressure			最高转速 Max. speed (r/min)	最低转速 Min. speed (r/min)	尺寸 Dimensions L mm
		P1 bar	P2 bar	P3 bar			
HDA1.5D2Q0	2	210	230	250	5000	1000	98
HDA1.5D3Q0	3	210	230	250	5000	1000	98
HDA1.5D4Q0	4	210	230	250	4000	800	98
HDA1.5D5Q0	5	210	230	250	4000	800	98
HDA1.5D6Q0	6	210	230	250	3000	800	101
HDA1.5D8Q0	8	210	230	250	3000	800	104
HDA1.5D9Q0	9	180	200	220	3000	800	104
HDA1.5D11Q0	11	180	200	220	2500	600	107
HDA1.5D12Q0	12	180	200	220	2500	600	107

HDA1.5-Q1

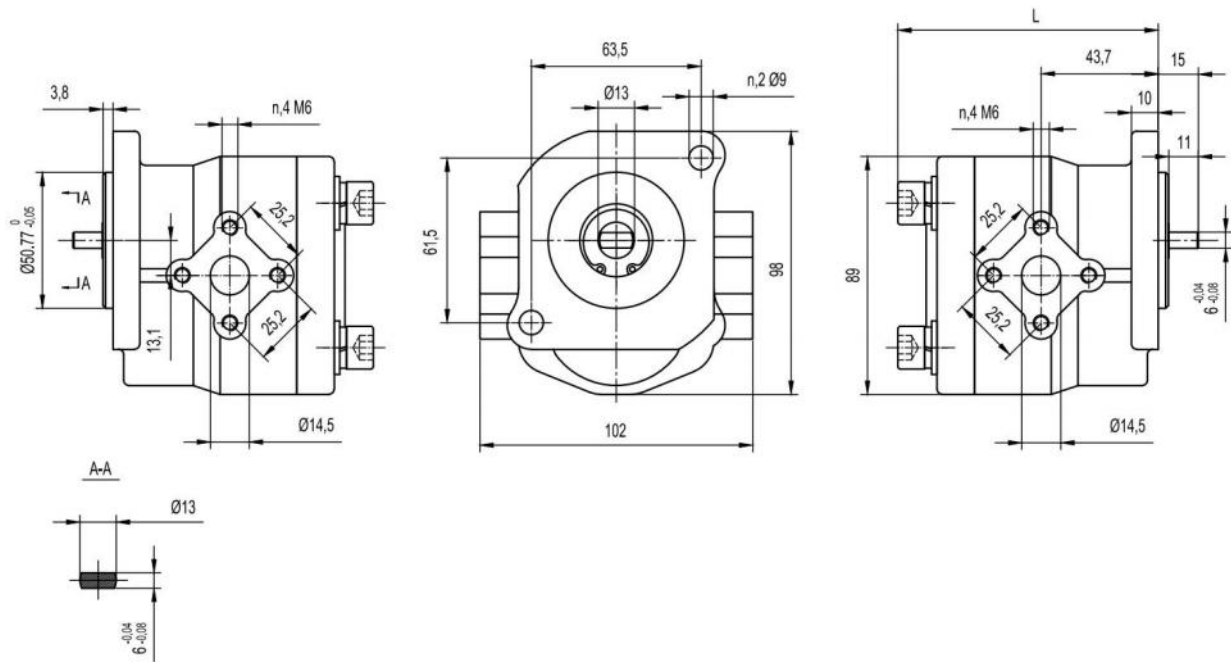


安装泵时，4 个 M8 的螺栓扭矩设定为 $27 \pm 3\text{Nm}$ 。

To mount the pump , four M8 screws with a torque wrench setting fixed at $27 \pm 3\text{Nm}$.

出油口
OUTLET

进油口
INLET

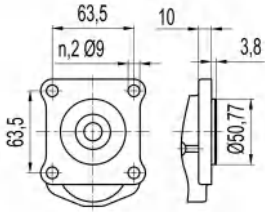


规格 Type	排量 Displacement (cm ³ /rev)	最大压力 Max. pressure			最高转速 Max. speed (r/min)	最低转速 Min. speed (r/min)	尺寸 Dimensions	
		P1 bar	P2 bar	P3 bar			L mm	
HDA1.5D2Q1	2	210	230	250	5000	1000	98	
HDA1.5D3Q1	3	210	230	250	5000	1000	98	
HDA1.5D4Q1	4	210	230	250	4000	800	98	
HDA1.5D5Q1	5	210	230	250	4000	800	98	
HDA1.5D6Q1	6	210	230	250	3000	800	101	
HDA1.5D8Q1	8	210	230	250	3000	800	104	
HDA1.5D9Q1	9	180	200	220	3000	800	104	
HDA1.5D11Q1	11	180	200	220	2500	600	107	
HDA1.5D12Q1	12	180	200	220	2500	600	107	

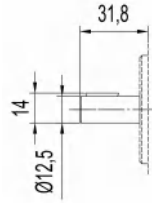
HDA1.5

前盖/Front COVER

轴伸/SHAFTS

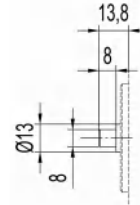


Q0



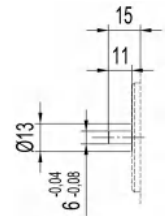
P2

最大扭矩
Max. Torque 60 Nm



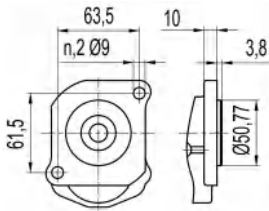
B3

最大扭矩
Max. Torque 60 Nm

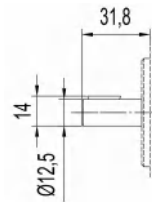


B18

最大扭矩
Max. Torque 60 Nm

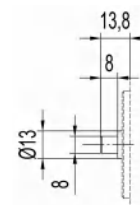


Q1



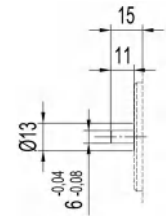
P2

最大扭矩
Max. Torque 60 Nm



B3

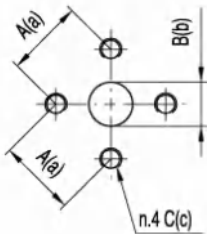
最大扭矩
Max. Torque 60 Nm



B18

最大扭矩
Max. Torque 60 Nm

油口/PORTS

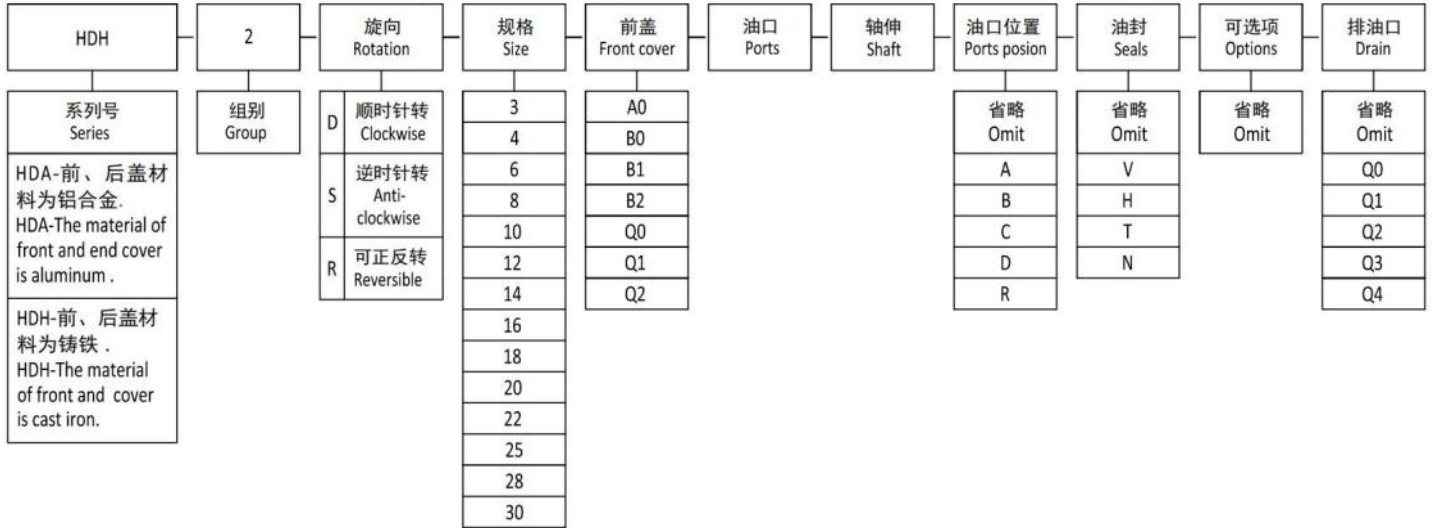


F

规格 TYPE	进油口 INLET			出油口 OUTLET		
	A	B	C	a	b	c
HDA1.5..2 ~ HDA1.5..12	25.2	φ 14.5	M6	25.2	φ 14.5	M6

HDA2[HDH2]

如何订购/HOW TO ORDER



油口位置/Ports position

省略 - 侧进侧出
A - 前进前出
B - 后进前出
C - 后进侧出
D - 侧进后出
R - 后进后出

Omit - Side inlet and side outlet .
A - Front inlet and front outlet .
B - Back inlet and front outlet .
C - Back inlet and side outlet .
D - Side inlet and back outlet .
R - Back inlet and back outlet .

油封/Seals

省略 - 温度范围在-10°C~+80°C, 进油口最高绝对压力为 3bar。
V - 适用于高温介质, 温度范围在-10°C~+120°C。
H - 适用于低温介质, 温度范围在-40°C~+120°C。
T - 适用于进油口最大绝对压力 3~6bar。
N - 适用于进油口最大绝对压力 3~6bar。

Omit - Range between -10°C and +80°C, inlet pressure up to max. 3 bar absolute .
V - Version suitable for fluid at hi-temperatures, range between -10°C and +120°C.
H - Version suitable for fluid at low-temperatures, range between -40°C and +80°C.
T - Version suitable for inlet pressure up to max. 3 and 6 bar absolute.
N - Version suitable for inlet pressure up to max. 3 and 10 bar absolute .

排油口/Drain

省略 - 没有排油口。
Q0 - 内部排油口。
Q1 - 外部排油口 G1/4。
Q2 - 外部排油口 9/16-18 UNF。
Q3 - 外部排油口 7/16-20 UNF。
Q4 - 外部排油口 M12X1.5。

Omit - Have no drain .
Q0 - Internal drain .
Q1 - External drain G1/4.
Q2 - External drain 9/16-18 UNF.
Q3 - External drain 7/16-20UNF.
Q4 - External drain M12X1.5.

范例/Examples

HDH2D8B0F1Z1 = HDH 系列, 2 组, 右旋, 8cc/rev 排量, B0 前盖, F1 油口, Z1 轴伸, 侧进侧出, 标准油封。

HDH2D8B0F1Z1 = HDH series, 2 group pump, Clockwise, 8cc/rev, B0 front cover, F1 ports, Z1 shaft, Side inlet and side outlet, standard seal.

HDH2-A0[HDA2-A0]

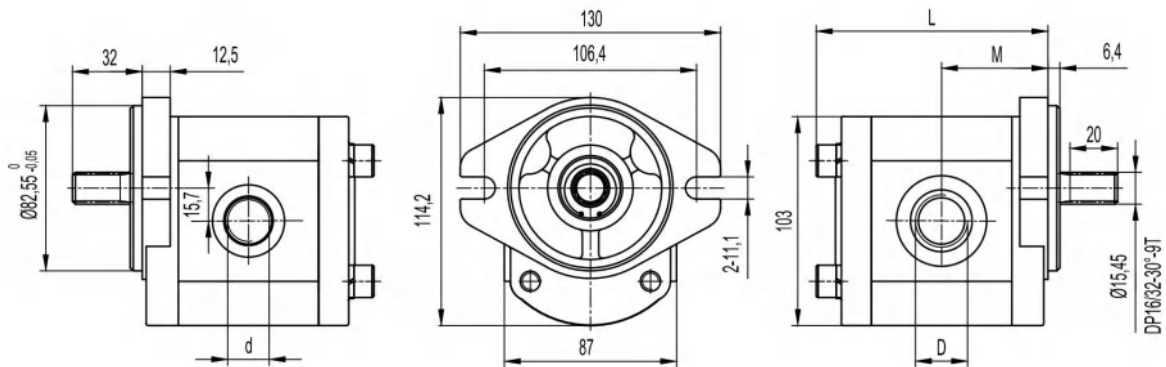


安装泵时，4 个 M10 的螺栓扭矩设定为 $67 \pm 3\text{Nm}$ 。

To mount the pump , four M10 screws with a torque wrench setting fixed at $67 \pm 3\text{Nm}$.

出油口
OUTLET

进油口
INLET



规格 Type	排量 Displacement (cm ³ /rev)	最大压力 Max. pressure			最高转速 Max. speed (r/min)	最低转速 Min. speed (r/min)	尺寸 Dimensions			
		P1 bar	P2 bar	P3 bar			M mm	L mm	D mm	d mm
HDH2D3A0	3	220	245	270	3500	800	43.8	96	1 1/16-12UNF	7/8-14UNF
HDH2D4A0	4	220	245	270	3500	800	44.5	97	1 1/16-12UNF	7/8-14UNF
HDH2D6A0	6	220	245	270	3000	600	46	100	1 1/16-12UNF	7/8-14UNF
HDH2D8A0	8	220	245	270	3000	800	47.7	103	1 1/16-12UNF	7/8-14UNF
HDH2D10A0	10	220	245	270	3000	800	49.3	107	1 1/16-12UNF	7/8-14UNF
HDH2D12A0	12	210	235	260	3000	600	51	110	1 1/16-12UNF	7/8-14UNF
HDH2D14A0	14	210	235	260	3000	600	52.6	113	1 1/16-12UNF	7/8-14UNF
HDH2D16A0	16	210	235	260	3000	600	54.3	117	1 1/16-12UNF	7/8-14UNF
HDH2D18A0	18	200	225	250	3000	600	55.9	120	1 1/16-12UNF	7/8-14UNF
HDH2D20A0	20	200	225	250	3000	600	57.5	123	1 1/16-12UNF	7/8-14UNF
HDH2D22A0	22	200	225	250	3000	600	59.2	127	1 1/16-12UNF	7/8-14UNF
HDH2D25A0	25	200	225	250	3000	600	61.6	131	1 1/16-12UNF	7/8-14UNF
HDH2D28A0	28	160	170	180	2500	500	64	136	1 1/16-12UNF	7/8-14UNF
HDH2D30A0	30	150	160	170	2500	500	65.8	140	1 5/16-12UNF	7/8-14UNF

HDH2-A0-R

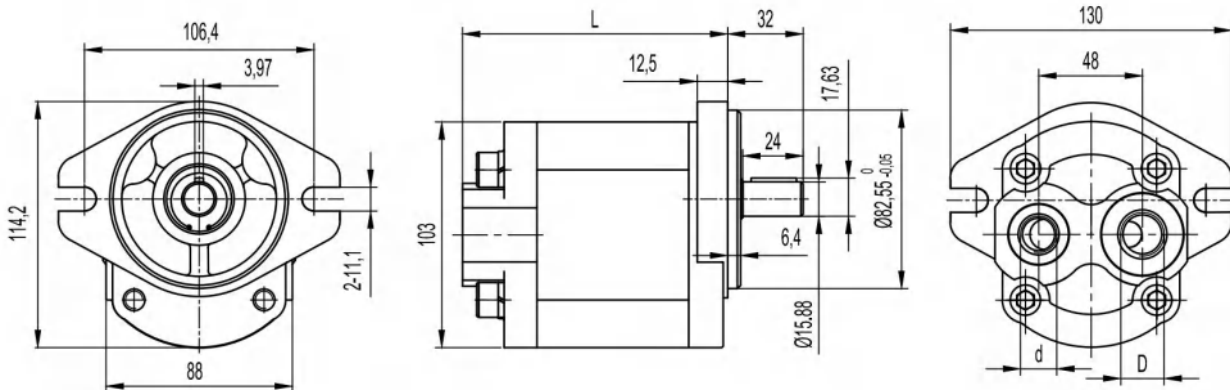


安装泵时，4 个 M10 的螺栓扭矩设定为 $67 \pm 3\text{Nm}$ 。

To mount the pump , four M10 screws with a torque wrench setting fixed at $67 \pm 3\text{Nm}$.

出油口
OUTLET

进油口
INLET



规格 Type	排量 Displacement (cm ³ /rev)	最大压力 Max. pressure			最高转速 Max. speed (r/min)	最低转速 Min. speed (r/min)	尺寸 Dimensions		
		P1 bar	P2 bar	P3 bar			L mm	D	d
HDH2D3A0-R	3	220	245	270	3500	800	102.6	1 1/16-12UNF	7/8-14UNF
HDH2D4A0-R	4	220	245	270	3500	800	104	1 1/16-12UNF	7/8-14UNF
HDH2D6A0-R	6	220	245	270	3000	600	107	1 1/16-12UNF	7/8-14UNF
HDH2D8A0-R	8	220	245	270	3000	800	110.5	1 1/16-12UNF	7/8-14UNF
HDH2D10A0-R	10	220	245	270	3000	800	113.6	1 1/16-12UNF	7/8-14UNF
HDH2D12A0-R	12	210	235	260	3000	600	117	1 1/16-12UNF	7/8-14UNF
HDH2D14A0-R	14	210	235	260	3000	600	120	1 1/16-12UNF	7/8-14UNF
HDH2D16A0-R	16	210	235	260	3000	600	123.5	1 1/16-12UNF	7/8-14UNF
HDH2D18A0-R	18	200	225	250	3000	600	127	1 1/16-12UNF	7/8-14UNF
HDH2D20A0-R	20	200	225	250	3000	600	130	1 1/16-12UNF	7/8-14UNF
HDH2D22A0-R	22	200	225	250	3000	600	133.5	1 1/16-12UNF	7/8-14UNF
HDH2D25A0-R	25	200	225	250	3000	600	138	1 1/16-12UNF	7/8-14UNF
HDH2D28A0-R	28	160	170	180	2500	500	143	1 1/16-12UNF	7/8-14UNF
HDH2D30A0-R	30	150	160	170	2500	500	147	1 5/16-12UNF	7/8-14UNF

HDH2-B1

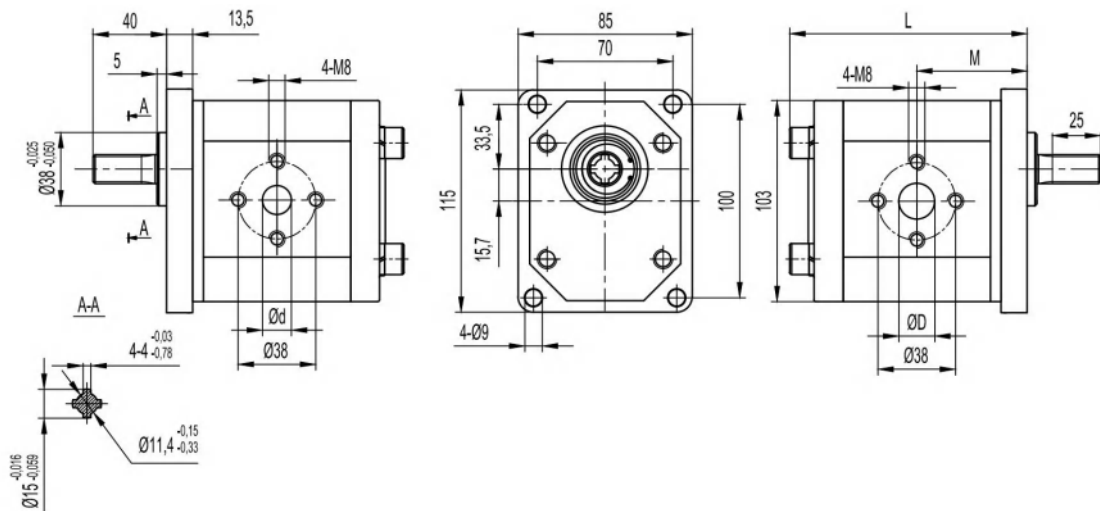


安装泵时，4 个 M10 的螺栓扭矩设定为 $67 \pm 3\text{Nm}$ 。

To mount the pump , four M10 screws with a torque wrench setting fixed at $67 \pm 3\text{Nm}$.

出油口
OUTLET

进油口
INLET



规格 Type	排量 Displacement (cm ³ /rev)	最大压力 Max. pressure			最高转速 Max. speed (r/min)	最低转速 Min. speed (r/min)	尺寸 Dimensions			
		P1 bar	P2 bar	P3 bar			M mm	L mm	D mm	d mm
HDH2D3B1	3	220	245	270	3500	800	43.8	96	14	10
HDH2D4B1	4	220	245	270	3500	800	44.5	97	14	10
HDH2D6B1	6	220	245	270	3000	600	46	100	14	10
HDH2D8B1	8	220	245	270	3000	800	47.7	103	18	15
HDH2D10B1	10	220	245	270	3000	800	49.3	107	18	15
HDH2D12B1	12	210	235	260	3000	600	51	110	18	15
HDH2D14B1	14	210	235	260	3000	600	52.6	113	18	15
HDH2D16B1	16	210	235	260	3000	600	54.3	117	18	15
HDH2D18B1	18	200	225	250	3000	600	55.9	120	18	15
HDH2D20B1	20	200	225	250	3000	600	57.5	123	18	15
HDH2D22B1	22	200	225	250	3000	600	59.2	127	18	15
HDH2D25B1	25	200	225	250	3000	600	61.6	131	20	15
HDH2D28B1	28	160	170	180	2500	500	64	136	20	15
HDH2D30B1	30	150	160	170	2500	500	65.8	140	20	15

HDH2-B2

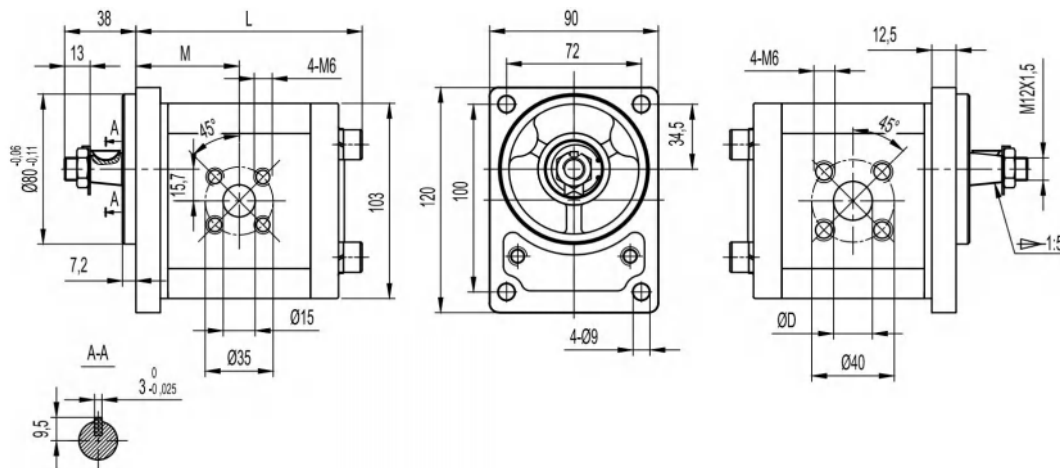


安装泵时，4 个 M10 的螺栓扭矩设定为 $67 \pm 3\text{Nm}$ 。

To mount the pump , four M10 screws with a torque wrench setting fixed at $67 \pm 3\text{Nm}$.

出油口
OUTLET

进油口
INLET



规格 Type	排量 Displacement (cm ³ /rev)	最大压力 Max. pressure			最高转速 Max. speed (r/min)	最低转速 Min. speed (r/min)	尺寸 Dimensions		
		P1 bar	P2 bar	P3 bar			M mm	L mm	D mm
HDH2D3B2	3	220	245	270	3500	800	39.9	96	15
HDH2D4B2	4	220	245	270	3500	800	39.9	97	15
HDH2D6B2	6	220	245	270	3000	600	41.1	100	15
HDH2D8B2	8	220	245	270	3000	800	43.2	103	15
HDH2D10B2	10	220	245	270	3000	800	43.7	107	20
HDH2D12B2	12	210	235	260	3000	600	47.5	110	20
HDH2D14B2	14	210	235	260	3000	600	47.5	113	20
HDH2D16B2	16	210	235	260	3000	600	47.5	117	20
HDH2D18B2	18	200	225	250	3000	600	47.5	120	20
HDH2D20B2	20	200	225	250	3000	600	47.7	123	20
HDH2D22B2	22	200	225	250	3000	600	55.1	127	20
HDH2D25B2	25	200	225	250	3000	600	61.8	131	20
HDH2D28B2	28	160	170	180	2500	500	64.3	136	20
HDH2D30B2	30	150	160	170	2500	500	66	140	20

HDH2-Q0

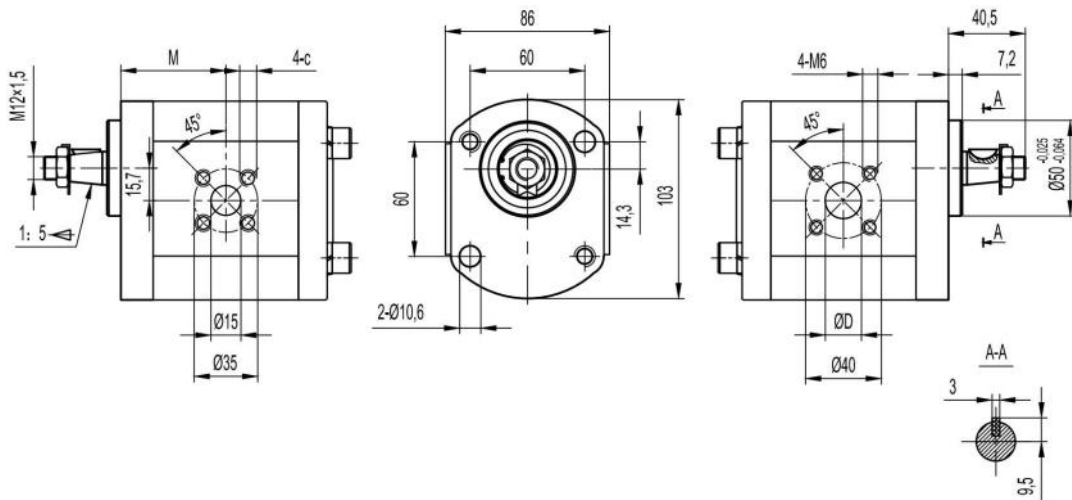


安装泵时，2 个 M10 的螺栓扭矩设定为 $67 \pm 3\text{Nm}$ 。

To mount the pump , two M10 screws with a torque wrench setting fixed at $67 \pm 3\text{Nm}$.

出油口
OUTLET

进油口
INLET



规格 Type	排量 Displacement (cm ³ /rev)	最大压力 Max. pressure			最高转速 Max. speed (r/min)	最低转速 Min. speed (r/min)	尺寸 Dimensions		
		P1 bar	P2 bar	P3 bar			M mm	L mm	D mm
HDH2D3Q0	3	220	245	270	3500	800	39.9	96	15
HDH2D4Q0	4	220	245	270	3500	800	39.9	97	15
HDH2D6Q0	6	220	245	270	3000	600	41.1	100	15
HDH2D8Q0	8	220	245	270	3000	800	43.2	103	15
HDH2D10Q0	10	220	245	270	3000	800	43.7	107	20
HDH2D12Q0	12	210	235	260	3000	600	47.5	110	20
HDH2D14Q0	14	210	235	260	3000	600	47.5	113	20
HDH2D16Q0	16	210	235	260	3000	600	47.5	117	20
HDH2D18Q0	18	200	225	250	3000	600	47.5	120	20
HDH2D20Q0	20	200	225	250	3000	600	47.7	123	20
HDH2D22Q0	22	200	225	250	3000	600	55.1	127	20
HDH2D25Q0	25	200	225	250	3000	600	61.8	131	20
HDH2D28Q0	28	160	170	180	2500	500	64.3	136	20
HDH2D30Q0	30	150	160	170	2500	500	66	140	20

HDH2-Q1

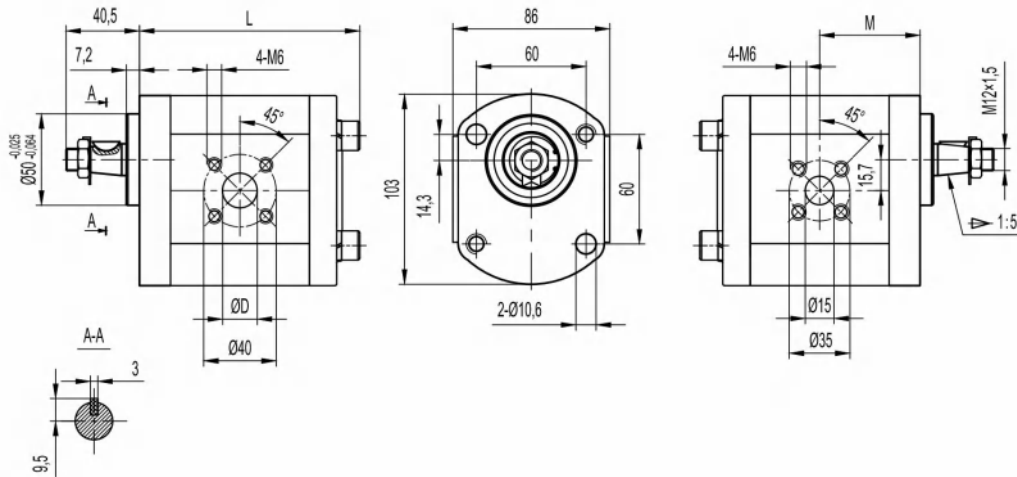


安装泵时，2 个 M10 的螺栓扭矩设定为 $67 \pm 3\text{Nm}$ 。

To mount the pump , two M10 screws with a torque wrench setting fixed at $67 \pm 3\text{Nm}$.

进油口
INLET

出油口
OUTLET



规格 Type	排量 Displacement (cm ³ /rev)	最大压力 Max. pressure			最高转速 Max. speed (r/min)	最低转速 Min. speed (r/min)	尺寸 Dimensions		
		P1 bar	P2 bar	P3 bar			M mm	L mm	D mm
HDH2S3Q1	3	220	245	270	3500	800	39.9	96	15
HDH2S4Q1	4	220	245	270	3500	800	39.9	97	15
HDH2S6Q1	6	220	245	270	3000	600	41.1	100	15
HDH2S8Q1	8	220	245	270	3000	800	43.2	103	15
HDH2S10Q1	10	220	245	270	3000	800	43.7	107	20
HDH2S12Q1	12	210	235	260	3000	600	47.5	110	20
HDH2S14Q1	14	210	235	260	3000	600	47.5	113	20
HDH2S16Q1	16	210	235	260	3000	600	47.5	117	20
HDH2S18Q1	18	200	225	250	3000	600	47.5	120	20
HDH2S20Q1	20	200	225	250	3000	600	47.7	123	20
HDH2S22Q1	22	200	225	250	3000	600	55.1	127	20
HDH2S25Q1	25	200	225	250	3000	600	61.8	131	20
HDH2S28Q1	28	160	170	180	2500	500	64.3	136	20
HDH2S30Q1	30	150	160	170	2500	500	66	140	20

HDH2-Q2

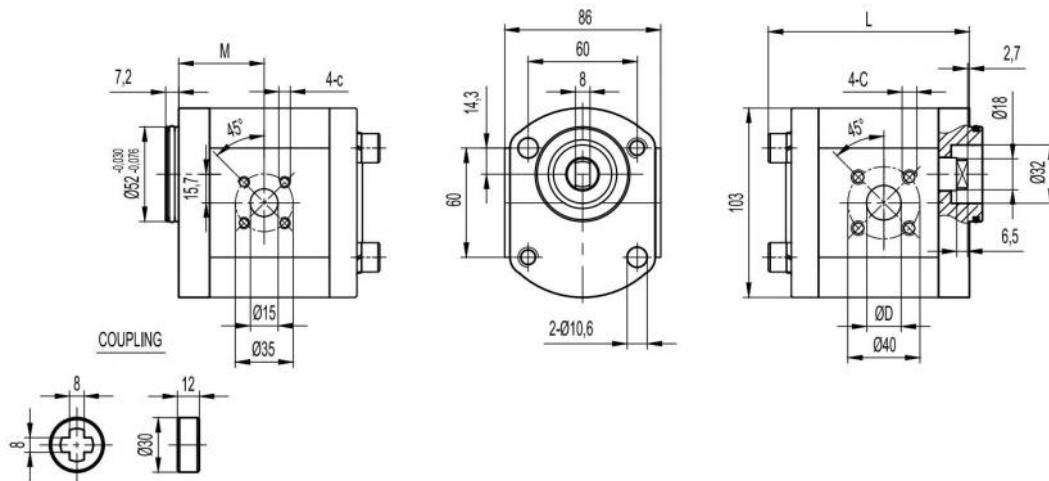


安装泵时，2 个 M10 的螺栓扭矩设定为 $67 \pm 3\text{Nm}$ 。

To mount the pump , two M10 screws with a torque wrench setting fixed at $67 \pm 3\text{Nm}$.

出油口
OUTLET

进油口
INLET



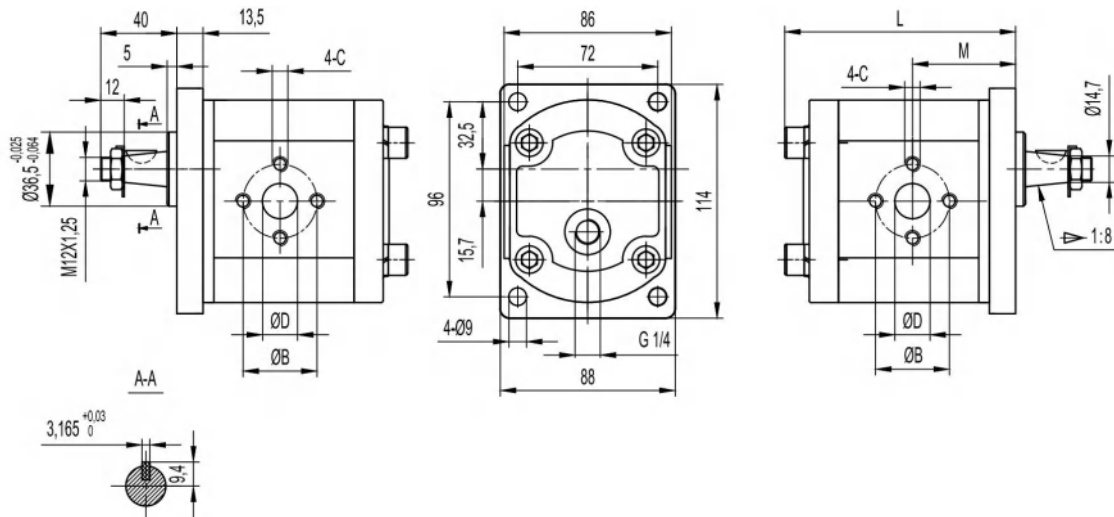
规格 Type	排量 Displacement (cm ³ /rev)	最大压力 Max. pressure			最高转速 Max. speed (r/min)	最低转速 Min. speed (r/min)	尺寸 Dimensions		
		P1 bar	P2 bar	P3 bar			M mm	L mm	D mm
HDH2D3Q2	3	220	245	270	3500	800	39.9	96	15
HDH2D4Q2	4	220	245	270	3500	800	39.9	97	15
HDH2D6Q2	6	220	245	270	3000	600	41.1	100	15
HDH2D8Q2	8	220	245	270	3000	800	43.2	103	15
HDH2D10Q2	10	220	245	270	3000	800	43.7	107	20
HDH2D12Q2	12	210	235	260	3000	600	47.5	110	20
HDH2D14Q2	14	210	235	260	3000	600	47.5	113	20
HDH2D16Q2	16	210	235	260	3000	600	47.5	117	20
HDH2D18Q2	18	200	225	250	3000	600	47.5	120	20
HDH2D20Q2	20	200	225	250	3000	600	47.7	123	20
HDH2D22Q2	22	200	225	250	3000	600	55.1	127	20
HDH2D25Q2	25	200	225	250	3000	600	61.8	131	20
HDH2D28Q2	28	160	170	180	2500	500	64.3	136	20
HDH2D30Q2	30	150	160	170	2500	500	66	140	20

HDM2-B0



安装泵时，4 个 M10 的螺栓扭矩设定为 $67 \pm 3\text{Nm}$ 。

To mount the pump , four M10 screws with a torque wrench setting fixed at $67 \pm 3\text{Nm}$.

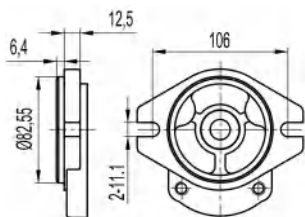


规格 Type	排量 Displacement (cm ³ /rev)	最大压力 Max. pressure			最高转速 Max. speed (r/min)	最低转速 Min. speed (r/min)	尺寸 Dimensions				
		P1 bar	P2 bar	P3 bar			M mm	L mm	B mm	D mm	C
HDM2R3B0-Q1	3	220	245	270	3500	800	43.8	96	30	13	M6
HDM2R4B0-Q1	4	220	245	270	3500	800	44.5	97	30	13	M6
HDM2R6B0-Q1	6	220	245	270	3000	600	46	100	30	13	M6
HDM2R8B0-Q1	8	220	245	270	3000	800	47.7	103	30	13	M6
HDM2R10B0-Q1	10	220	245	270	3000	800	49.3	107	40	20	M8
HDM2R12B0-Q1	12	210	235	260	3000	600	51	110	40	20	M8
HDM2R14B0-Q1	14	210	235	260	3000	600	52.6	113	40	20	M8
HDM2R16B0-Q1	16	210	235	260	3000	600	54.3	117	40	20	M8
HDM2R18B0-Q1	18	200	225	250	3000	600	55.9	120	40	20	M8
HDM2R20B0-Q1	20	200	225	250	3000	600	57.5	123	40	20	M8
HDM2R22B0-Q1	22	200	225	250	3000	600	59.2	127	40	20	M8
HDM2R25B0-Q1	25	200	225	250	3000	600	61.6	131	40	22	M8
HDM2R28B0-Q1	28	160	170	180	2500	500	64	136	40	22	M8
HDM2R30B0-Q1	30	150	160	170	2500	500	65.8	140	40	22	M8

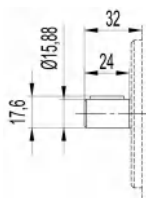
HDH2[HDA2]

前盖/Front COVER

轴伸/SHAFTS



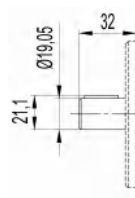
A0



3,97

P4

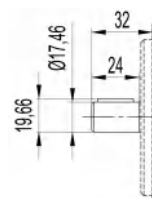
最大扭矩
Max. Torque 140 Nm



4,8

P5

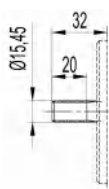
最大扭矩
Max. Torque 159 Nm



5

P9

最大扭矩
Max. Torque 179 Nm



DP16/32-30°-9T

S3

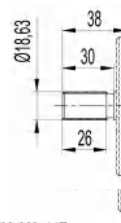
最大扭矩
Max. Torque 186 Nm



DP16/32-30°-10T

S4

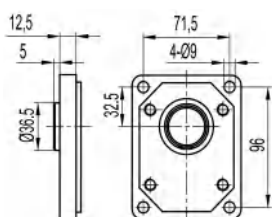
最大扭矩
Max. Torque 191 Nm



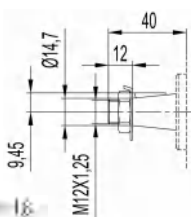
DP16/32-30°-11T

S5

最大扭矩
Max. Torque 200 Nm

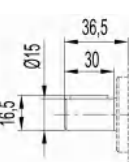


B0



Z1

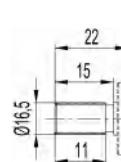
最大扭矩
Max. Torque 199 Nm



4

P10

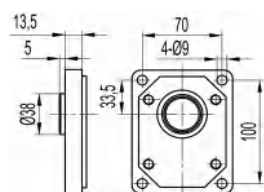
最大扭矩
Max. Torque 145 Nm



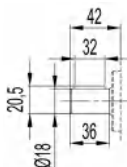
DIN5482 B17X14

S7

最大扭矩
Max. Torque 155 Nm



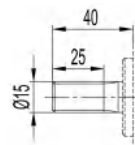
B1



6

P12

最大扭矩
Max. Torque 151 Nm



4-15x11.4x4

H2

最大扭矩
Max. Torque 95 Nm



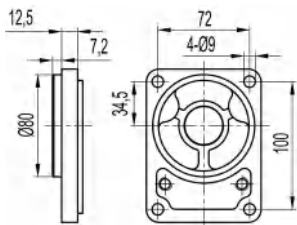
B2

最大扭矩
Max. Torque 98 Nm

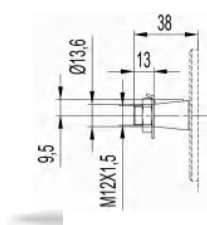
HDH2[HDA2]

前盖/Front COVER

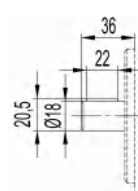
轴伸/SHAFTS



B2

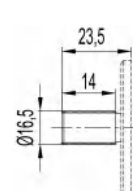


Z2



6

P11



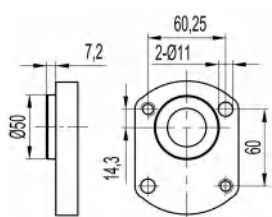
DIN5482 B17X14

S15

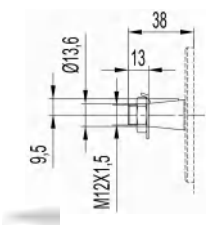
最大扭矩
Max. Torque 180 Nm

最大扭矩
Max. Torque 150 Nm

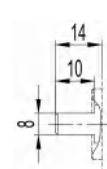
最大扭矩
Max. Torque 150 Nm



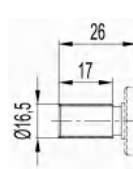
Q0



Z2



B2



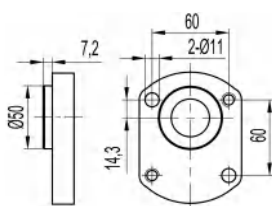
DIN5482 B17X14

S28

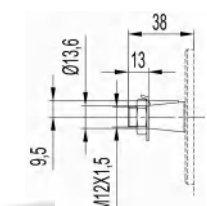
最大扭矩
Max. Torque 180 Nm

最大扭矩
Max. Torque 98 Nm

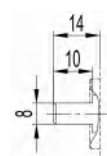
最大扭矩
Max. Torque 150 Nm



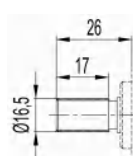
Q1



Z2



B2



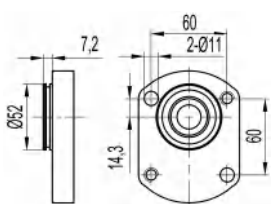
DIN5482 B17X14

S28

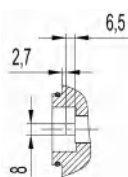
最大扭矩
Max. Torque 180 Nm

最大扭矩
Max. Torque 98 Nm

最大扭矩
Max. Torque 150 Nm



Q2

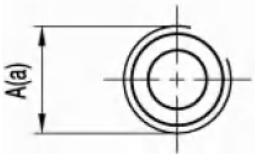


B4

最大扭矩
Max. Torque 98 Nm

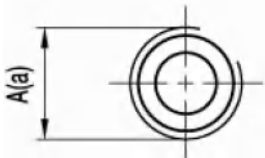
HDH2[HDA2]

PORTS



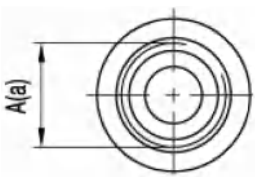
L13/L14/L24/L25

规格 TYPE	代号 CODE	进油口 INLET	出油口 OUTLET
		A	a
HD(A)H2..3 ~ HD(A)H2..6	L13	G1/2	G1/2
HD(A)H2..8 ~ HD(A)H2..30	L14	G3/4	G1/2
HD(A)HP2..8 ~ HD(A)H2..30	L24	G3/4	G3/4
HD(A)H2..16 ~ HD(A)H2..30	L25	G1	G3/4



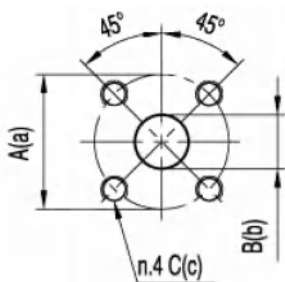
L7/L6/L16

规格 TYPE	代号 CODE	进油口 INLET	出油口 OUTLET
		A	a
HD(A)H2..3 ~ HD(A)H2..12	L7	PT1/2	PT1/2
HD(A)H2..14 ~ HD(A)H2..25	L6	PT3/4	PT1/2
HD(A)H2..28 ~ HD(A)H2..30	L16	PT1	PT3/4



L20/L10/L11/L26

规格 TYPE	代号 CODE	进油口 INLET	出油口 OUTLET
		A	a
HD(A)H2..3 ~ HD(A)H2..28	L20	7/8-14UNF	3/4-16UNF
HD(A)H2..3 ~ HD(A)H2..28	L10	1 1/16-12UNF	7/8-14UNF
HD(A)H2..30	L11	1 5/16-12UNF	7/8-14UNF
HD(A)H2..8 ~ HD(A)H2..30	L26	1 5/16-12UNF	1 1/16-12UNF

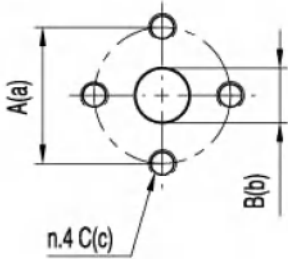


F4/F5/F30

规格 TYPE	代号 CODE	进油口 INLET			出油口 OUTLET		
		A	B	C	a	b	c
HD(A)H2..3 ~ HD(A)H2..8	F4	40	15	M6	35	15	M6
HD(A)H2..10 ~ HD(A)H2..22	F5	40	20	M6	35	15	M6
HD(A)H2..25 ~ HD(A)H2..30	F30	55	26	M8	55	18	M8

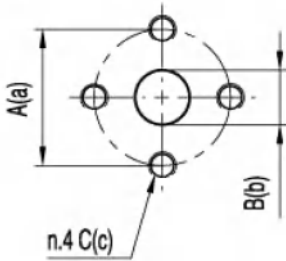
HDH2[HDA2]

PORTS



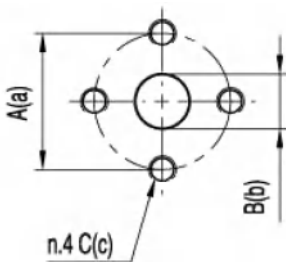
F1/F2/F3

规格 TYPE	代号 CODE	进油口 INLET			出油口 OUTLET		
		A	B	C	a	b	c
HD(A)H2..3 ~ HD(A)H2..8	F1	30	13	M6	30	13	M6
HD(A)H2..10 ~ HD(A)H2..22	F2	40	20	M8	30	13	M6
HD(A)HP2..25 ~ HD(A)H2..30	F3	40	22	M8	30	13	M6



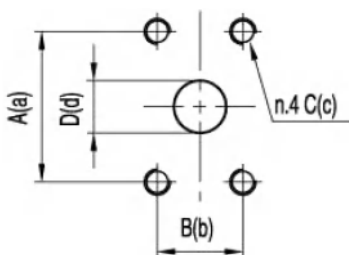
F9/F10/F11

规格 TYPE	代号 CODE	进油口 INLET			出油口 OUTLET		
		A	B	C	a	b	c
HD(A)H2..3 ~ HD(A)H2..8	F9	38	14	M8	38	10	M8
HD(A)H2..10 ~ HD(A)H2..22	F10	38	18	M8	38	15	M8
HD(A)H2..25 ~ HD(A)H2..30	F11	38	20	M8	38	15	M8



F12/F13/F14/F15

规格 TYPE	代号 CODE	进油口 INLET			出油口 OUTLET		
		A	B	C	a	b	c
HD(A)H2..3 ~ HD(A)H2..10	F12	40	13	M8	40	13	M8
HD(A)H2..12 ~ HD(A)H2..20	F13	40	19	M8	40	13	M8
HD(A)H2..22 ~ HD(A)H2..28	F14	40	19	M8	40	19	M8
HD(A)H2..30	F15	40	21	M8	40	19	M8

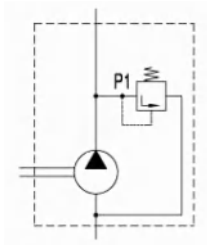


F16/F17/F18

规格 TYPE	代号 CODE	进油口 INLET				出油口 OUTLET			
		A	B	C	D	a	b	c	d
HD(A)H2..3 ~ HD(A)H2..16	F16	38.1	17.48	5/16-18UNC	13	38.1	17.48	5/16-18UNC	13
HD(A)H2..18 ~ HD(A)H2..20	F17	47.63	22.23	3/8-16UNC	20	38.1	17.48	5/16-18UNC	13
HD(A)H2..22 ~ HD(A)H2..30	F18	47.63	22.23	3/8-16UNC	20	47.63	22.23	3/8-16UNC	20

HDH2[HDA2]

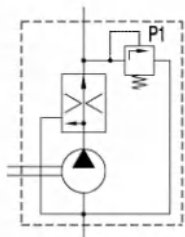
可选项/OPTIONS



Yxxx

描述 DISCRIPTION

内部泄油压力安全阀；设定压力 5 ~ 200bar.
Pressure relief valve with internal drain ; setting pressure between 5 and 200 bar .



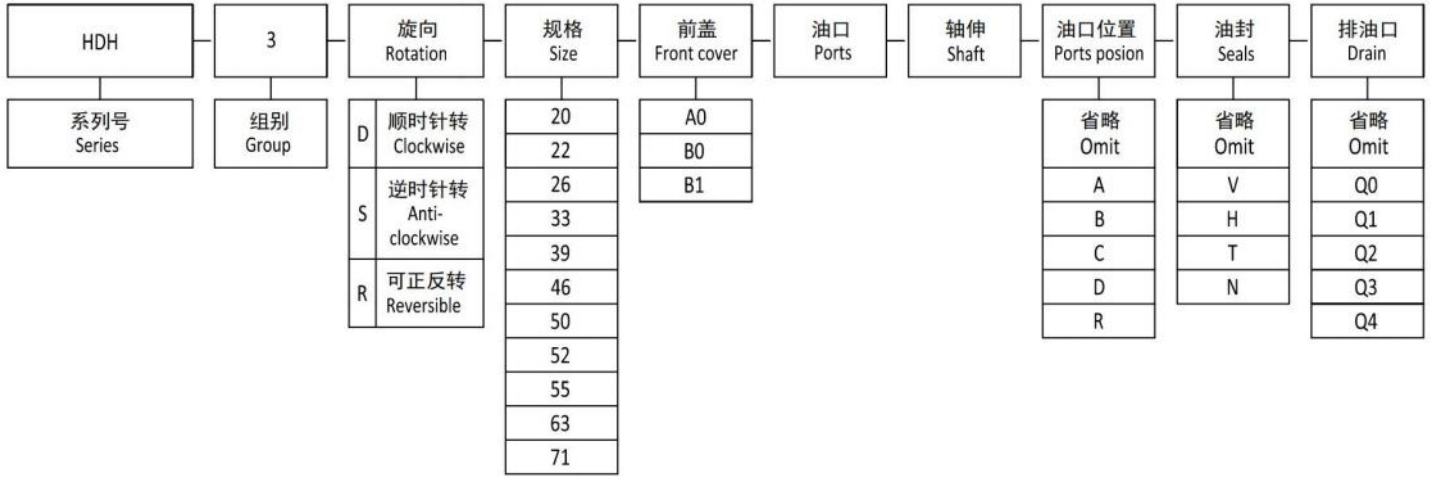
Fxxxx

描述 DISCRIPTION

三通流量阀带安全阀；卸出流量接油泵吸油口；控制压力
100~180 bar；控制流量 2~30L/min。
3-way flow control valve with pressure relief valve ; excess flow returned to suction ;
setting pressure between 100 and 180 bar ; control flow between
2 and 30 L/min .

HDH3

如何订购/HOW TO ORDER



油口位置/Ports position

省略 - 侧进侧出

- A - 前进前出
- B - 后进前出
- C - 后进侧出
- D - 侧进后出
- R - 后进后出

Omit - Side inlet and side outlet .

- A - Front inlet and front outlet .
- B - Back inlet and front outlet .
- C - Back inlet and side outlet .
- D - Side inlet and back outlet .
- R - Back inlet and back outlet .

油封/ Seals

省略 - 温度范围在-10°C~+80°C, 进油口最高绝对压力为 3bar.

V - 适用于高温介质, 温度范围在-10°C~+120°C.

H - 适用于低温介质, 温度范围在-40°C~+120°C.

T - 适用于进油口最大绝对压力 3~6bar.

N - 适用于进油口最大绝对压力 3~6bar.

Omit - Range between -10°C and +80°C, inlet pressure up to max. 3 bar absolute .

V - Version suitable for fluid at hi-temperatures, range between -10°C and +120°C.

H - Version suitable for fluid at low-temperatures, range between -40°C and +80°C.

T - Version suitable for inlet pressure up to max. 3 and 6 bar absolute.

N - Version suitable for inlet pressure up to max. 3 and 10 bar absolute .

排油口/Drain

省略 - 没有排油口。

- Q0 - 内部排油口。
- Q1 - 外部排油口 G3/8.
- Q2 - 外部排油口 3/4-16 UNF.
- Q3 - 外部排油口 G1/4.
- Q4 - 外部排油口 9/16-18 UNF.

Omit - Have no drain .

- Q0 - Internal drain .
- Q1 - External drain G3/8.
- Q2 - External drain 3/4-16 UNF.
- Q3 - External drain G1/4.
- Q4 - External drain 9/16-18 UNF.

范例/Examples

HDH3D39A0L25S8 = HDH 系列, 3 组, 右旋, 39cc/rev 排量, A0 前盖, L25 油口, S8 轴伸, 侧进侧出, 标准油封。

HDH3D39A0L25S8 = HDH series , 3 group pump , Clockwise , 39cc/rev , A0 front cover , L25 ports , S8 shaft , Side inlet and side outlet , standard seal .

HDH3-A0

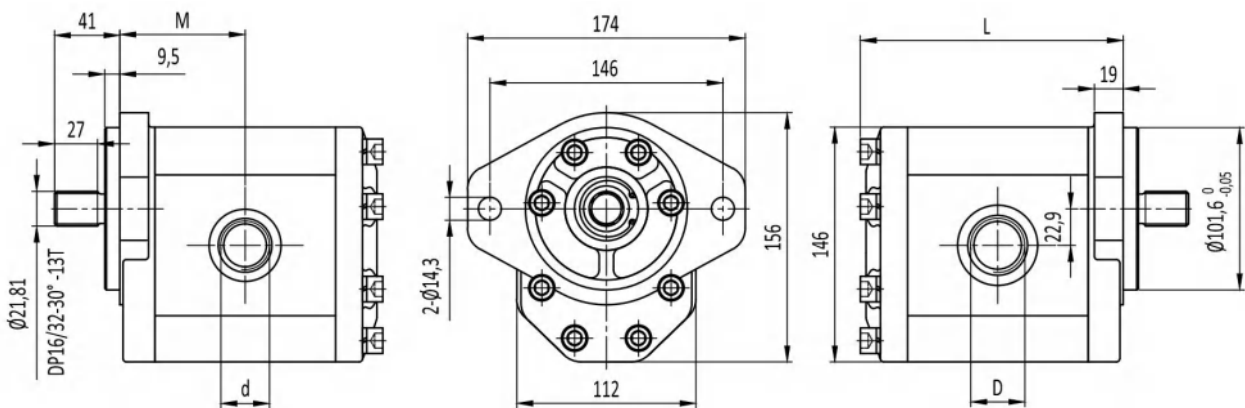


安装泵时, 16 个 M10 的螺栓扭矩设定为 $67 \pm 3\text{Nm}$ 。

To mount the pump , sixteen M10 screws with a torque wrench setting fixed at $67 \pm 3\text{Nm}$.

出油口
OUTLET

进油口
INLET



规格 Type	排量 Displacement (cm ³ /rev)	最大压力 Max. pressure			最高转速 Max. speed (r/min)	最低转速 Min. speed (r/min)	尺寸 Dimensions			
		P1 bar	P2 bar	P3 bar			M mm	L mm	D	d
HDH3D20A0	20	250	265	280	3500	600	63	129	1 5/16-12UNF	1 1/16-12UNF
HDH3D22A0	22	250	265	280	3500	600	64	131	1 5/16-12UNF	1 1/16-12UNF
HDH3D26A0	26	250	265	280	3000	600	65	134	1 5/16-12UNF	1 1/16-12UNF
HDH3D33A0	33	230	250	270	3000	500	68	140	1 5/16-12UNF	1 1/16-12UNF
HDH3D39A0	39	230	250	270	3000	500	72	147	1 5/8-12UNF	1 1/16-12UNF
HDH3D46A0	46	230	250	270	3000	500	75	153	1 5/8-12UNF	1 1/16-12UNF
HDH3D50A0	50	220	240	260	3000	500	77	157	1 5/8-12UNF	1 1/16-12UNF
HDH3D52A0	52	220	240	260	3000	500	78	159	1 5/8-12UNF	1 1/16-12UNF
HDH3D55A0	55	200	225	250	2800	500	79	161	1 7/8-12UNF	1 5/16-12UNF
HDH3D63A0	63	200	225	250	2800	500	83	169	1 7/8-12UNF	1 5/16-12UNF
HDH3D71A0	71	180	200	220	2500	500	86	176	1 7/8-12UNF	1 5/16-12UNF

HDH3-A0-R

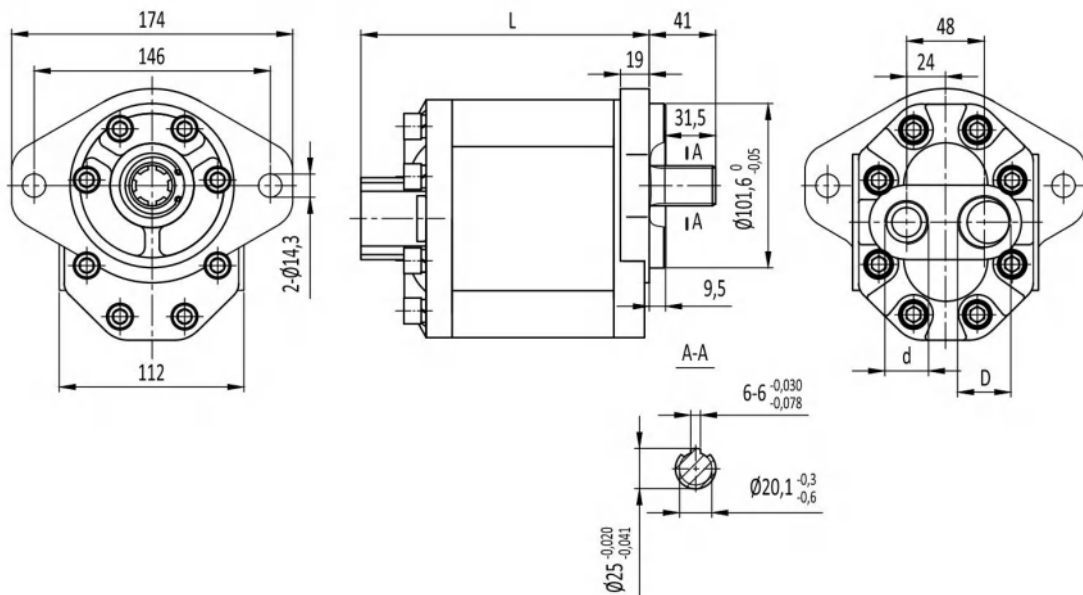


安装泵时, 16 个 M10 的螺栓扭矩设定为 $67 \pm 3\text{Nm}$ 。

To mount the pump, sixteen M10 screws with a torque wrench setting fixed at $67 \pm 3\text{Nm}$.

出油口
OUTLET

进油口
INLET



规格 Type	排量 Displacement (cm ³ /rev)	最大压力 Max. pressure			最高转速 Max. speed (r/min)	最低转速 Min. speed (r/min)	尺寸 Dimensions		
		P1 bar	P2 bar	P3 bar			L mm	D	d
HDH3D20A0-R	20	250	265	280	3500	600	139	M33X2	M27X2
HDH3D22A0-R	22	250	265	280	3500	600	141	M33X2	M27X2
HDH3D26A0-R	26	250	265	280	3000	600	144	M33X2	M27X2
HDH3D33A0-R	33	230	250	270	3000	500	150	M33X2	M27X2
HDH3D39A0-R	39	230	250	270	3000	500	157	M33X2	M27X2
HDH3D46A0-R	46	230	250	270	3000	500	163	M33X2	M27X2
HDH3D50A0-R	50	220	240	260	3000	500	167	M33X2	M27X2
HDH3D52A0-R	52	220	240	260	3000	500	169	M33X2	M27X2
HDH3D55A0-R	55	200	225	250	2800	500	171	M33X2	M27X2
HDH3D63A0-R	63	200	225	250	2800	500	179	M33X2	M27X2
HDH3D71A0-R	71	180	200	220	2500	500	186	M33X2	M27X2

HDH3-B1



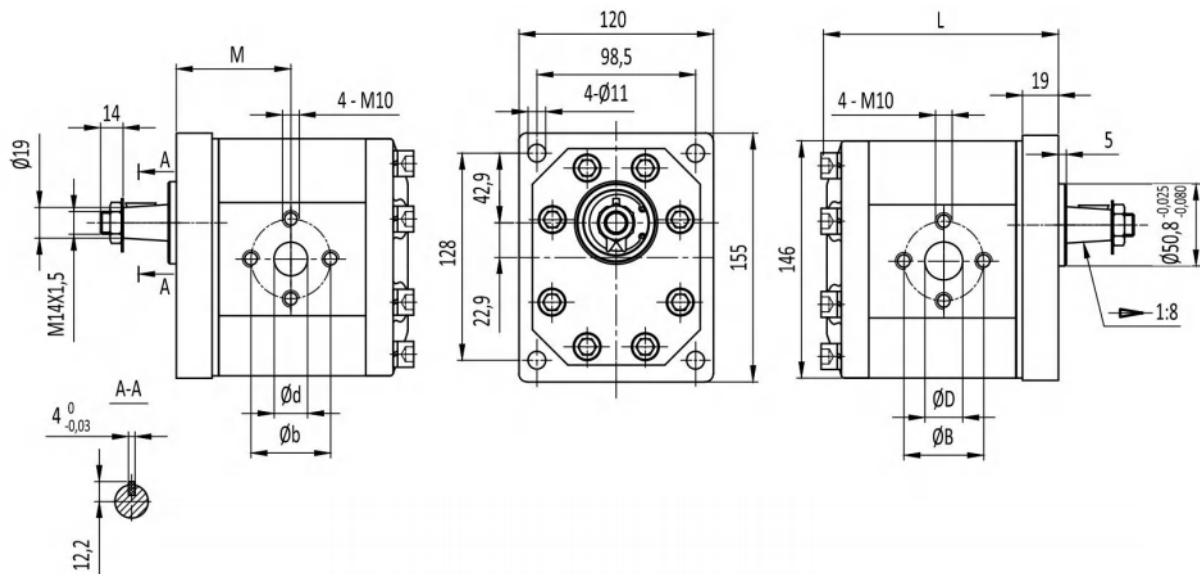
轴伸 M14X1.5 螺母扭矩设定为 80Nm。
 安装泵时, 16 个 M10 的螺栓扭矩设定为 $67 \pm 3\text{Nm}$ 。

Shaft M14X1.5 nut with a torque wrench Setting fixed at 80Nm .

To mount the pump , sixteen M10 screws with a torque wrench setting fixed at $67 \pm 3\text{Nm}$.

出油口
 OUTLET

进油口
 INLET

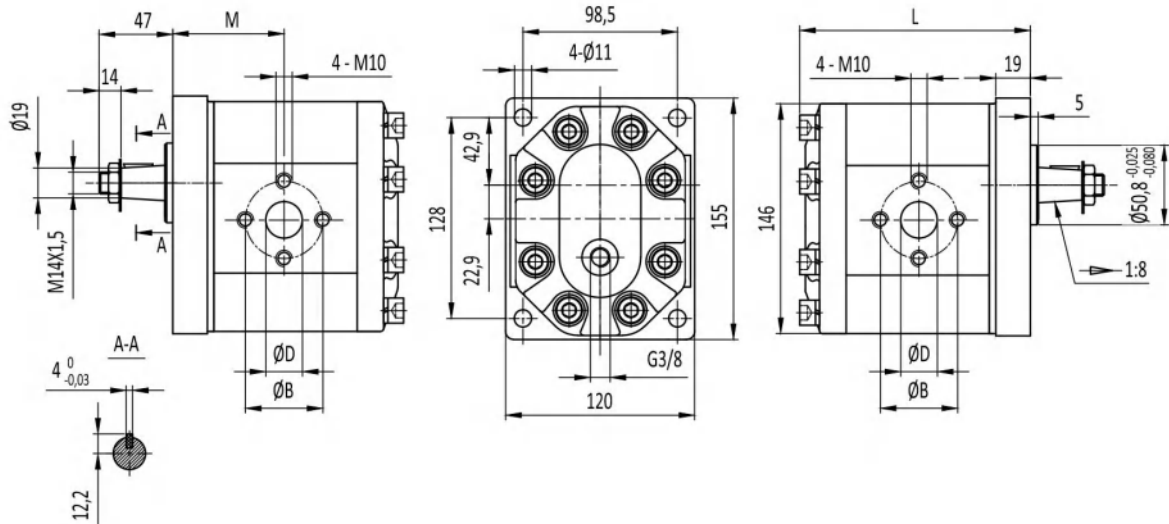


规格 Type	排量 Displacement (cm ³ /rev)	最大压力 Max. pressure			最高转速 Max. speed (r/min)	最低转速 Min. speed (r/min)	尺寸 Dimensions					
		P1 bar	P2 bar	P3 bar			M mm	L mm	B mm	D mm	b mm	d mm
HDH3D20B1	20	250	265	280	3500	600	63	129	56	27	56	19
HDH3D22B1	22	250	265	280	3500	600	64	131	56	27	56	19
HDH3D26B1	26	250	265	280	3000	600	65	134	56	27	56	19
HDH3D33B1	33	230	250	270	3000	500	68	140	56	27	56	19
HDH3D39B1	39	230	250	270	3000	500	72	147	56	27	56	19
HDH3D46B1	46	230	250	270	3000	500	75	153	51	27	51	27
HDH3D50B1	50	220	240	260	3000	500	77	157	56	27	56	27
HDH3D52B1	52	220	240	260	3000	500	78	159	56	27	56	27
HDH3D55B1	55	200	225	250	2800	500	79	161	62	33	51	27
HDH3D63B1	63	200	225	250	2800	500	83	169	62	33	51	27
HDH3D71B1	71	180	200	220	2500	500	86	176	62	33	51	27

HDM3-B1



轴伸 M14X1.5 螺母扭矩设定为 80Nm。
 安装泵时，16 个 M10 的螺栓扭矩设定为 $67 \pm 3\text{Nm}$ 。
 Shaft M14X1.5 nut with a torque wrench Setting fixed at 80Nm .
 To mount the pump , sixteen M10 screws with a torque wrench setting fixed at $67 \pm 3\text{Nm}$.

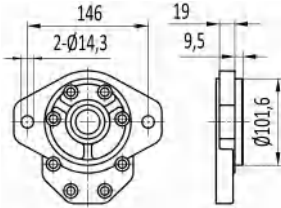


规格 Type	排量 Displacement (cm ³ /rev)	最大压力 Max. pressure			最高转速 Max. speed (r/min)	最低转速 Min. speed (r/min)	尺寸 Dimensions			
		P1 bar	P2 bar	P3 bar			M mm	L mm	B mm	D mm
HDM3R20B1-Q1	20	250	265	280	3500	600	63	129	56	27
HDM3R22B1-Q1	22	250	265	280	3500	600	64	131	56	27
HDM3R26B1-Q1	26	250	265	280	3000	600	65	134	56	27
HDM3R33B1-Q1	33	230	250	270	3000	500	68	140	56	27
HDM3R39B1-Q1	39	230	250	270	3000	500	72	147	56	27
HDM3R46B1-Q1	46	230	250	270	3000	500	75	153	51	27
HDM3R50B1-Q1	50	220	240	260	3000	500	77	157	56	27
HDM3R52B1-Q1	52	220	240	260	3000	500	78	159	56	27
HDM3R55B1-Q1	55	200	225	250	2800	500	79	161	62	33
HDM3R63B1-Q1	63	200	225	250	2800	500	83	169	62	33
HDM3R71B1-Q1	71	180	200	220	2500	500	86	176	62	33

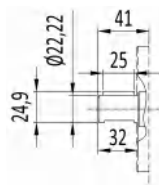
HDH3

前盖/FRONT COVER

轴伸/SHAFTS



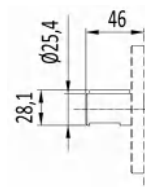
A0



6,35

P17

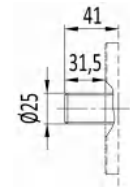
最大扭矩 400 Nm
Max. Torque



6,35

P27

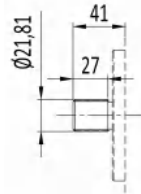
最大扭矩 445 Nm
Max. Torque



┌ 6-25x20.1x6

H3

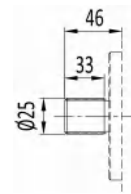
最大扭矩 495 Nm
Max. Torque



DP16/32-30° -13T

S8

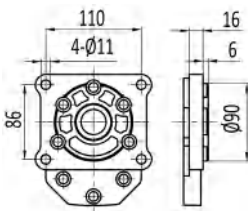
最大扭矩 495 Nm
Max. Torque



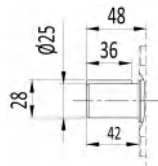
DP16/32-30° -15T

S13

最大扭矩 600 Nm
Max. Torque



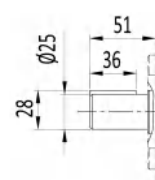
B0



8

P19

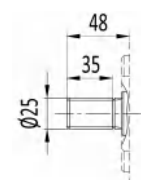
最大扭矩 445 Nm
Max. Torque



8

P20

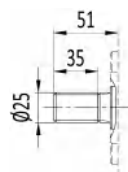
最大扭矩 445 Nm
Max. Torque



┌ 6-25x20.1x6

H6

最大扭矩 495 Nm
Max. Torque



┌ 6-25x20.1x6

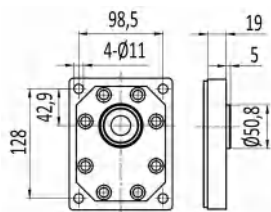
H7

最大扭矩 495 Nm
Max. Torque

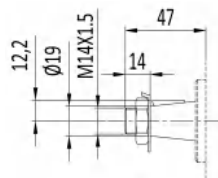
HDH3

前盖/FRONT COVER

轴伸/SHAFTS

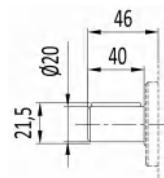


B1



Z7

最大扭矩
Max. Torque 300 Nm



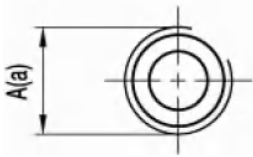
5

P18

最大扭矩
Max. Torque 445 Nm

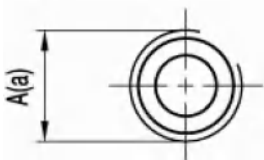
HDH3

油口/PORTS



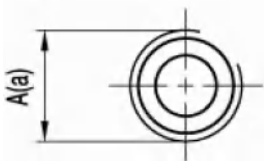
L24/L25/L39/L40

规格 TYPE	代号 CODE	进油口 INLET	出油口 OUTLET
		A	a
HDH[M]3..20 ~ HDH[M]3..22	L24	G3/4	G3/4
HDH3..26 ~ HDH3..39	L25	G1	G3/4
HDH3..46 ~ HDH3..63	L39	G1 1/4	G1
HDH3..71	L40	G1 1/2	G1 1/4



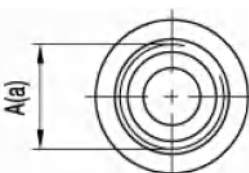
L36/L16/L37/L38

规格 TYPE	代号 CODE	进油口 INLET	出油口 OUTLET
		A	a
HDH[M]3..20 ~ HDH[M]3..22	L36	PT3/4	PT3/4
HDH3..26 ~ HDH3..39	L16	PT1	PT3/4
HDH3..46 ~ HDH3..63	L37	PT1 1/4	PT1
HDH3..71	L38	PT1 1/2	PT1 1/4



L28

规格 TYPE	代号 CODE	进油口 INLET	出油口 OUTLET
		A	a
HDH3..20 ~ HDH3..71	L28	M33X2	M27X2

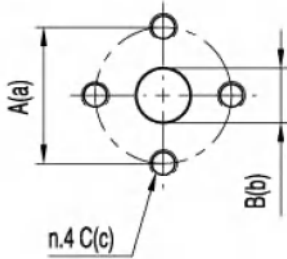


L26/L34/L35

规格 TYPE	代号 CODE	进油口 INLET	出油口 OUTLET
		A	a
HDH3..20 ~ HDH3..33	L26	1 5/16-12UNF	1 1/16-12UNF
HDH3..39 ~ HDH3..52	L34	1 5/8-12UNF	1 1/16-12UNF
HDH3..55 ~ HDH3..71	L35	1 7/8-12UNF	1 5/16-12UNF

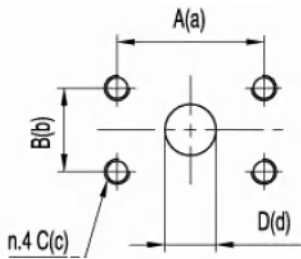
HDH3

油口/PORTS



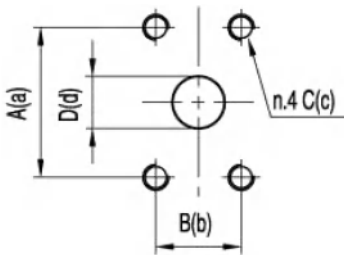
F24/F25/F26/F27

规格 TYPE	代号 CODE	进油口 INLET			出油口 OUTLET		
		A	B	C	a	b	c
HDH3..20 ~ HDH3..39	F24	56	27	M10	56	19	M10
HDH[M]3..46	F25	51	27	M10	51	27	M10
HDH[M]3..50 ~ HDH[M]3..52	F26	56	27	M10	56	27	M10
HDH3..55 ~ HDH3..71	F27	62	33	M10	51	27	M10



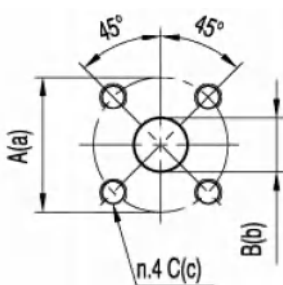
F40/F41/F42/F42

规格 TYPE	代号 CODE	进油口 INLET				出油口 OUTLET			
		A	B	C	D	a	b	c	d
HDH3..20 ~ HDH3..25	F40	57.2	26	M10	25	57.2	26	M10	20
HDH3..32	F41	57.2	26	M10	30	57.2	26	M10	20
HDH3..40	F42	57.2	26	M10	35	57.2	26	M10	20
HDH3..50 ~ HDH3..63	F43	57.2	26	M10	35	57.2	26	M10	25



F47/F48

规格 TYPE	代号 CODE	进油口 INLET				出油口 OUTLET			
		A	B	C	D	a	b	c	d
HDH3..20 ~ HDH3..52	F47	52.4	26.2	3/8-16UNC	27	47.6	22.2	3/8-16UNC	19
HDH3..55 ~ HDH3..71	F48	58.7	30.2	7/16-14UNC	33	52.4	26.2	3/8-16UNC	27

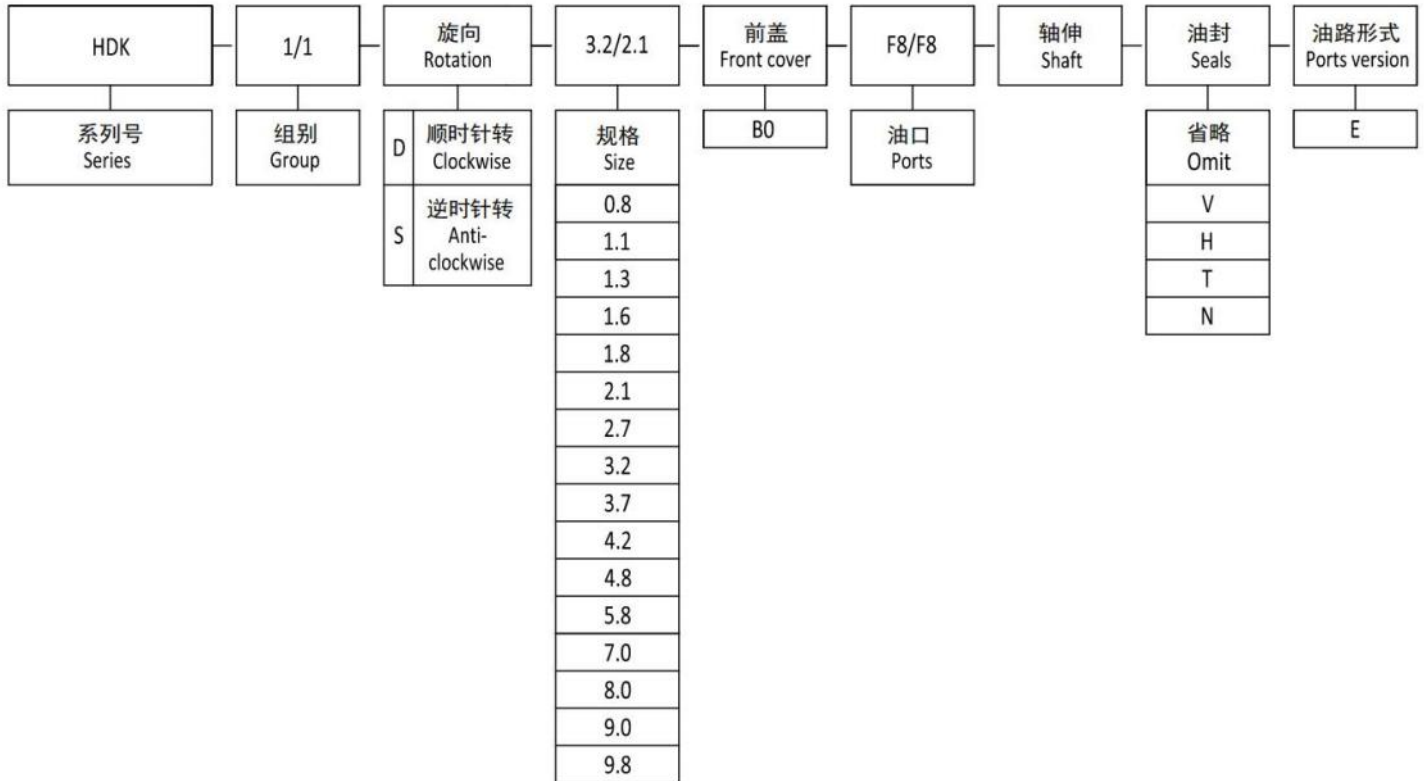


F19/F30/F20/F22/F21

规格 TYPE	代号 CODE	进油口 INLET			出油口 OUTLET		
		A	B	C	a	b	c
HDH[M]3..20 ~ HDH[M]3..26	F19	50	20	M8	50	20	M8
HDH3..20 ~ HDH3..71	F30	55	26	M8	55	18	M8
HDH3..33 ~ HDH3..46	F20	65	25	M8	65	20	M8
HDH3..50 ~ HDH3..63	F22	76	33	M8	76	25	M8
HDH3..50 ~ HDH3..71	F21	76	33	M10	76	25	M10

HDK1/1

如何订购/HOW TO ORDER



备注：油口和轴伸可以根据前面“HDK1”系列里面选项进行选择，如果您还有其它的型号，请联系我们。

Remark : choose the ports and shaft can accord the types of “HDK1” series ; and if you have other types , please contact us .

油封/ Seals

省略 - 温度范围在-10°C~+80°C，进油口最高绝对压力为 3bar。

V - 适用于高温介质，温度范围在-10°C~+120°C。

H - 适用于低温介质，温度范围在-40°C~+120°C。

T - 适用于进油口最大绝对压力 3~6bar。

N - 适用于进油口最大绝对压力 3~6bar。

Omit - Range between -10°C and +80°C, inlet pressure up to max. 3 bar absolute .

V - Version suitable for fluid at hi-temperatures , range between -10°C and +120°C.

H - Version suitable for fluid at low-temperatures , range between -40°C and +80°C.

T - Version suitable for inlet pressure up to max. 3 and 6 bar absolute.

N - Version suitable for inlet pressure up to max. 3 and 10 bar absolute .

油路形式/Ports version

E - 两进两出（中间完全密封）。

E - two inlet and two outlet (separated type) .

范例/Examples

HDK1/1D3.2/2.1B0F8/F8Z-E = HDK 系列，1/1 组，右旋，3.2/2.1cc/rev 排量，B0 前盖，F8/F8 油口，Z 轴伸，标准油封，E 油路形式。

HDK1/1D3.2/2.1B0F8/F8Z-E = HDK series , 1/1 group pump , Clockwise , 3.2/2.1 cc/rev , B0 front cover, F8/F8 ports , Z shaft , standard seal , E ports version .

HDK1/1-B0-E



8 个 M6 螺纹深 12。

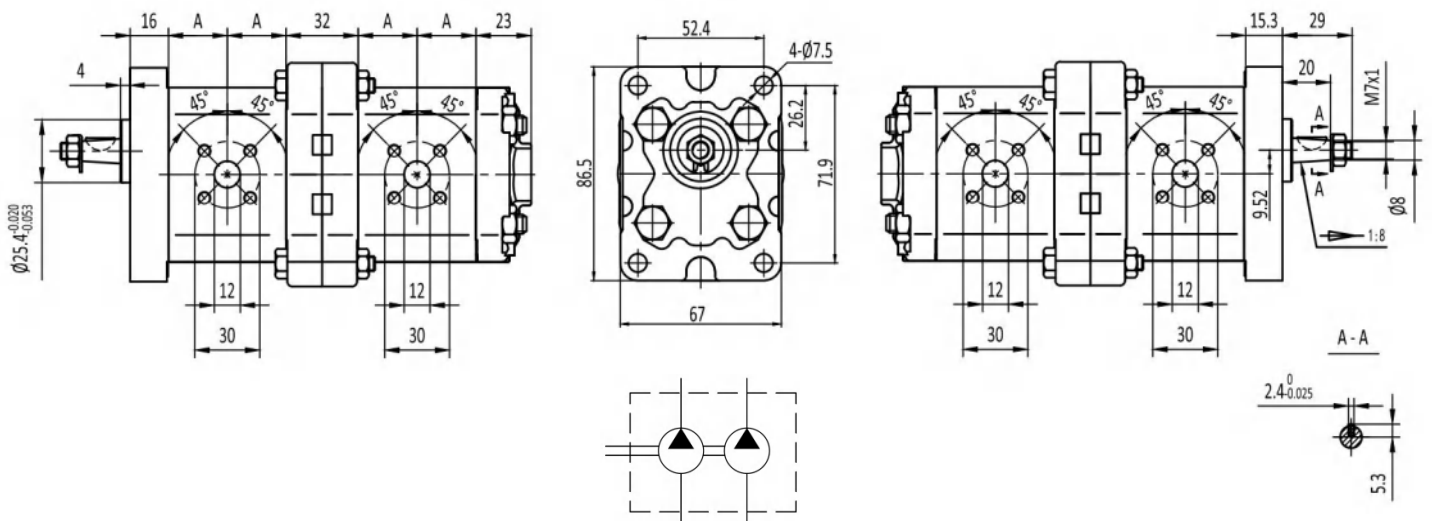
安装泵时，12 个 M8 的螺栓扭矩设定为 $27 \pm 3\text{Nm}$ 。

Eight M6 thread depth 12.

To mount the pump, twelve M8 screws with a torque wrench setting fixed at $27 \pm 3\text{Nm}$.

出油口
OUTLET

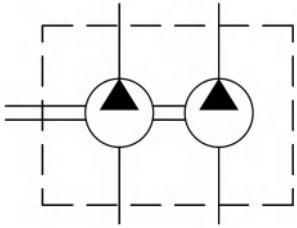
进油口
INLET



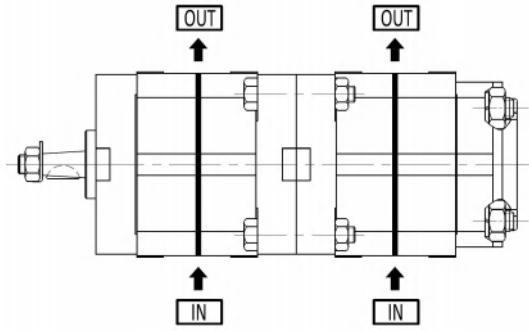
规格 Type	排量 Displacement	最大压力 Max. pressure			最高转速 Max. speed	最低转速 Min. speed	尺寸 Dimensions A
		P1	P2	P3			
	(cm ³ /rev)	bar	bar	bar	(r/min)	(r/min)	mm
HDK1/1D**/**B0F8/F8Z-E	0.8	200	225	250	3000	1000	17.8
	1.1	200	225	250	3000	1000	18
	1.3	200	225	250	3000	1000	18.5
	1.6	200	225	250	3000	1000	19
	1.8	200	225	250	3000	1000	19.5
	2.1	200	225	250	3000	1000	20
	2.7	200	225	250	3000	800	21
	3.2	200	225	250	3000	800	22
	3.7	200	225	250	3000	800	23
	4.2	200	225	250	3000	800	24
	4.8	190	210	230	3000	600	25
	5.8	190	210	230	3000	600	27
	7.0	160	180	200	2500	600	29
8.0	160	180	200	2100	600	31	

HDK1/1

油路形式/PORTS VERSION

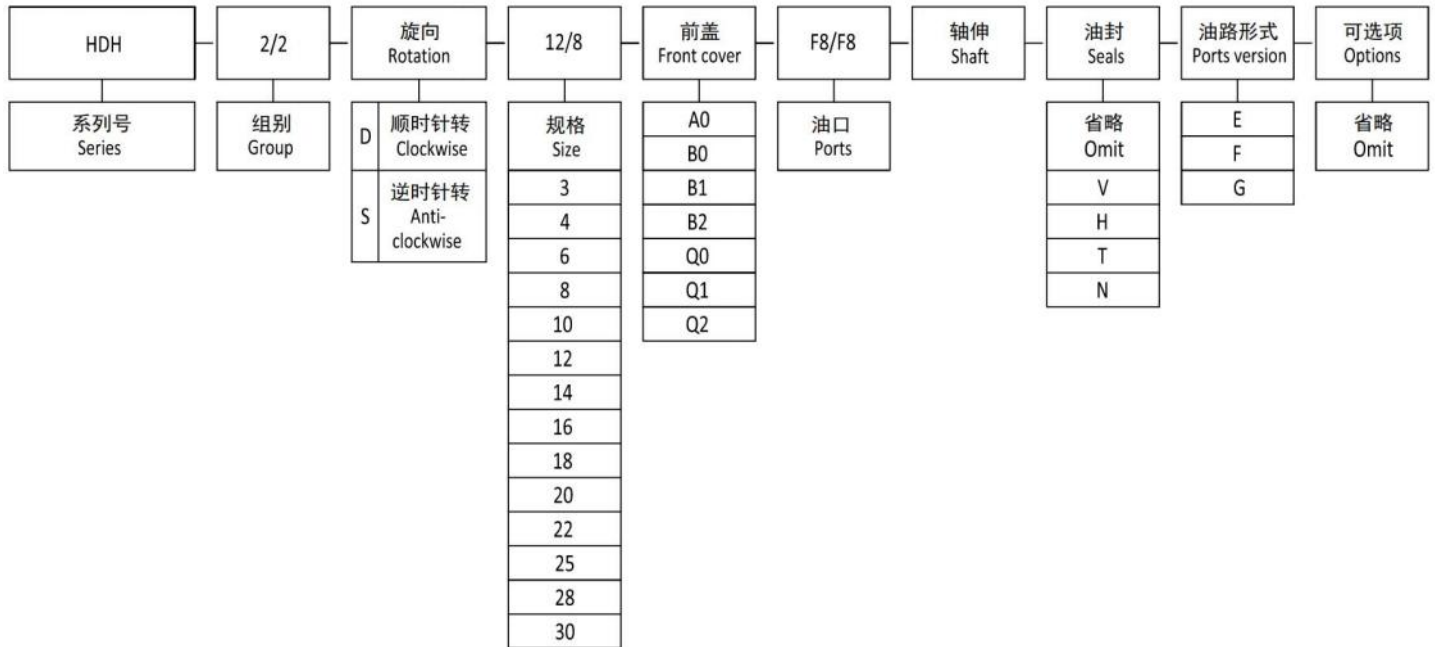


E



HDH2/2

如何订购/HOW TO ORDER



备注：油口和轴伸可以根据前面“HDA2[HDH2]”系列里面选项进行选择，如果您还有其它的型号，请联系我们。

Remark : choose the ports and shaft can accord the types of “HDA2[HDH2]” series ; and if you have other types , please contact us .

油封/ Seals

省略 - 温度范围在-10°C~+80°C，进油口最高绝对压力为 3bar。

V - 适用于高温介质，温度范围在-10°C~+120°C。

H - 适用于低温介质，温度范围在-40°C~+120°C。

T - 适用于进油口最大绝对压力 3~6bar。

N - 适用于进油口最大绝对压力 3~6bar。

Omit - Range between -10°C and +80°C, inlet pressure up to max. 3 bar absolute .

V - Version suitable for fluid at hi-temperatures , range between -10°C and +120°C.

H - Version suitable for fluid at low-temperatures , range between -40°C and +80°C.

T - Version suitable for inlet pressure up to max. 3 and 6 bar absolute.

N - Version suitable for inlet pressure up to max. 3 and 10 bar absolute .

油路形式/Ports version

E - 两进两出（中间完全密封）。

F - 两进两出（中间不完全密封）。

G - 一进两出（进油口在前泵上）。

E - two inlet and two outlet (separated type) .

F - two inlet and two outlet (common type) .

G - one inlet and two outlet (inlet on the front pump) .

可选项/Options

省略 - 没有阀。

Y - 压力安全阀。

Omit - Have no valve .

Y - Pressure relief valve .

范例/Examples

HDH2/2D12/8B0F2/F1Z1-E = HDH 系列, 2/2 组, 右旋, 12/8 cc/rev 排量, B0 前盖, F2/F1 油口, Z1 轴伸, 标准油封, E 油路形式。

HDH2/2D12/8B0F2/F1Z1-E = HDK series , 2/2 group pump , Clockwise , 12/8 cc/rev , B0 front cover, F2/F1 ports , Z1 shaft , standard seal , E ports version .

HDH2/2-B0-E

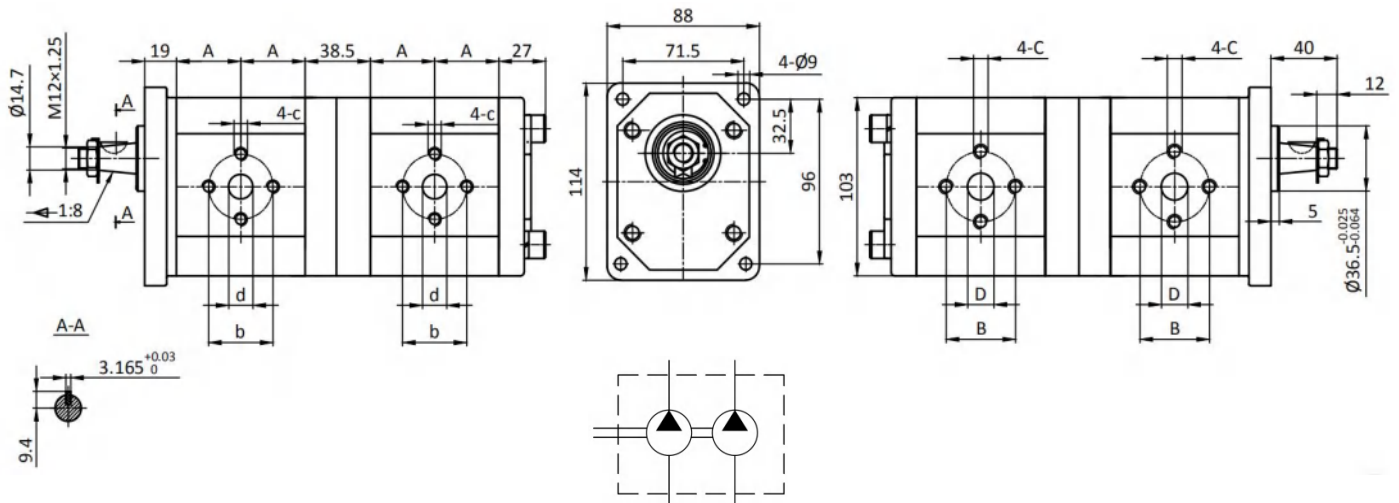


安装泵时，4 个 M10 的螺栓扭矩设定为 $67 \pm 3\text{Nm}$ 。

To mount the pump, four M10 screws with a torque wrench setting fixed at $67 \pm 3\text{Nm}$.

出油口
OUTLET

进油口
INLET



规格 Type	排量 Displacement	最大压力 Max. pressure			最高转速 Max. speed	最低转速 Min. speed	尺寸 Dimensions						
		P1	P2	P3			A	B	D	C	b	d	c
	(cm ³ /rev)	bar	bar	bar	(r/min)	(r/min)	mm	mm	mm		mm	mm	
HDH2/2DB0**/**-E	3	200	225	250	3000	800	24.5	30	13	M6	30	13	M6
	4	200	225	250	3000	800	25.3	30	13	M6	30	13	M6
	6	200	225	250	3000	600	27	30	13	M6	30	13	M6
	8	200	225	250	3000	600	28.6	30	13	M6	30	13	M6
	10	200	225	250	3000	600	30.3	40	20	M8	30	13	M6
	12	200	225	250	3000	600	32	40	20	M8	30	13	M6
	14	200	225	250	3000	600	33.6	40	20	M8	30	13	M6
	16	200	225	250	3000	600	35.3	40	20	M8	30	13	M6
	18	200	225	250	3000	600	37	40	20	M8	30	13	M6
	20	200	225	250	3000	600	38.6	40	20	M8	30	13	M6
	22	200	225	250	3000	600	40.3	40	20	M8	30	13	M6
	25	200	215	230	3000	600	42.8	40	22	M8	30	13	M6
	28	180	190	200	2500	500	45.3	40	22	M8	30	13	M6
30	160	170	180	2500	500	47	40	22	M8	30	13	M6	

HDH2/2-B0-F

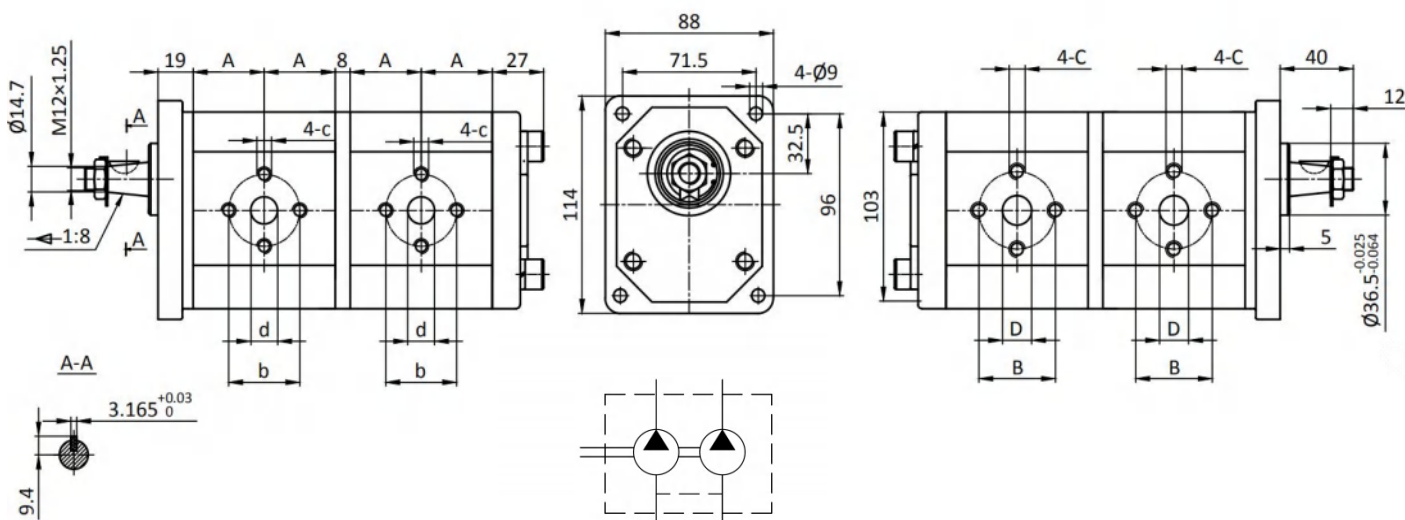


安装泵时，4 个 M10 的螺栓扭矩设定为 $67 \pm 3\text{Nm}$ 。

To mount the pump , four M10 screws with a torque wrench setting fixed at $67 \pm 3\text{Nm}$.

出油口
OUTLET

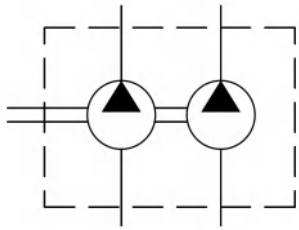
进油口
INLET



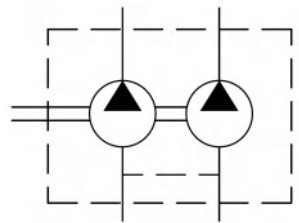
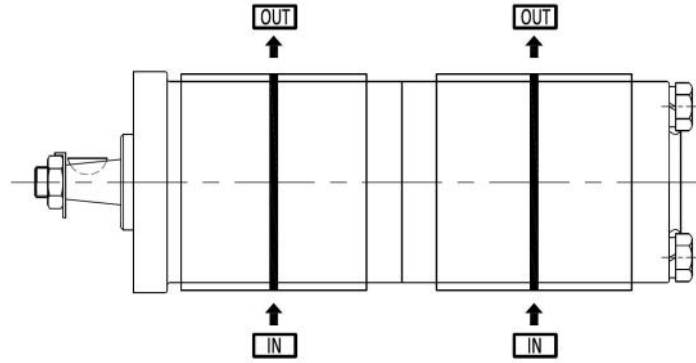
规格 Type	排量 Displacement	最大压力 Max. pressure			最高转速 Max. speed	最低转速 Min. speed	尺寸 Dimensions						
		P1	P2	P3			A	B	D	C	b	d	c
	(cm ³ /rev)	bar	bar	bar	(r/min)	(r/min)	mm	mm	mm		mm	mm	
HDH2/2DB0**/**-F	3	200	225	250	3000	800	24.5	30	13	M6	30	13	M6
	4	200	225	250	3000	800	25.3	30	13	M6	30	13	M6
	6	200	225	250	3000	600	27	30	13	M6	30	13	M6
	8	200	225	250	3000	600	28.6	30	13	M6	30	13	M6
	10	200	225	250	3000	600	30.3	40	20	M8	30	13	M6
	12	200	225	250	3000	600	32	40	20	M8	30	13	M6
	14	200	225	250	3000	600	33.6	40	20	M8	30	13	M6
	16	200	225	250	3000	600	35.3	40	20	M8	30	13	M6
	18	200	225	250	3000	600	37	40	20	M8	30	13	M6
	20	200	225	250	3000	600	38.6	40	20	M8	30	13	M6
	22	200	225	250	3000	600	40.3	40	20	M8	30	13	M6
	25	200	215	230	3000	600	42.8	40	22	M8	30	13	M6
	28	180	190	200	2500	500	45.3	40	22	M8	30	13	M6
30	160	170	180	2500	500	47	40	22	M8	30	13	M6	

HDH2/2

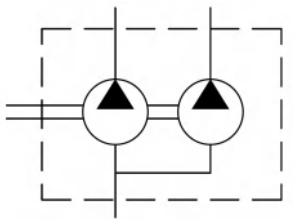
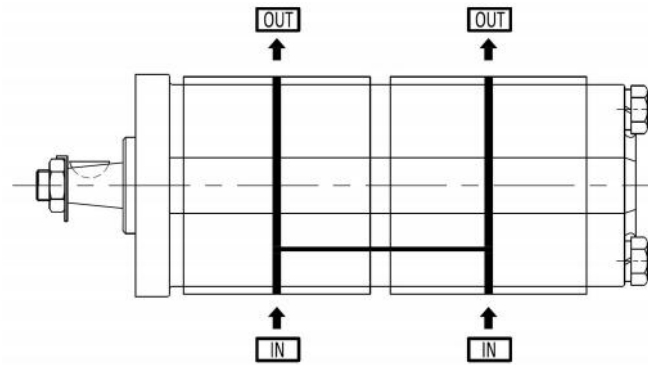
油路形式/PORTS VERSION



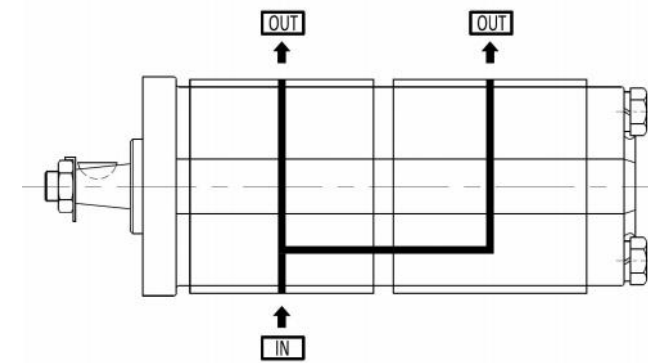
E



F

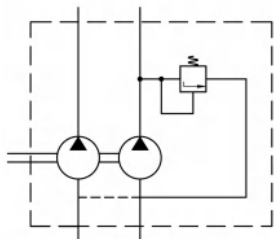


G



HDH2/2

可选项/OPTIONS



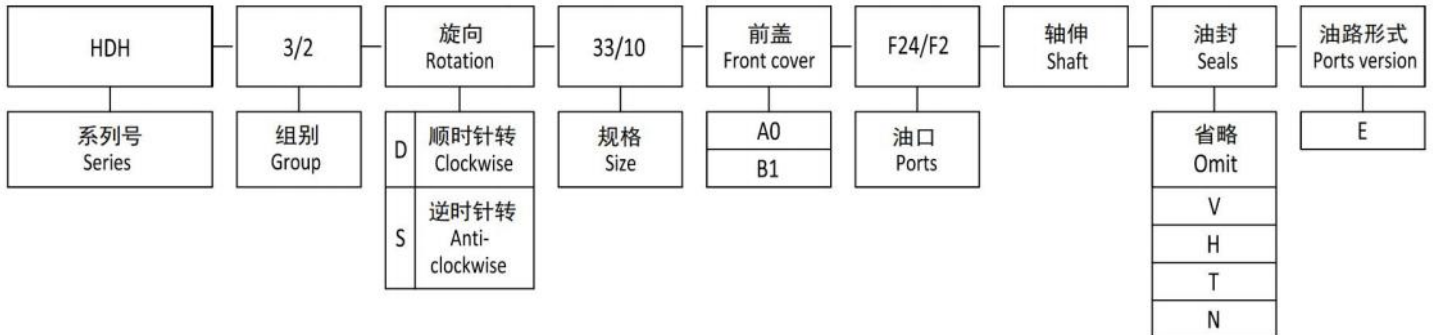
Yxxx

描述
DISCRIPTION

内部泄油压力安全阀；设定压力 5 ~ 200bar.
Pressure relief valve with internal drain ; setting pressure between 5 and 200 bar .

HDH3/2

如何订购/HOW TO ORDER



备注：前泵排量、油口和轴伸可以根据前面“HDH3”系列里面选项进行选择，后泵排量和油口可以根据前面“HDA2[HDH2]”系列里面选项进行选择；如果您还有其它的型号，请联系我们。

Remark : choose the displacement , ports and shaft of the front pump can accord the types of “ HDH3 ” series , choose the displacement and ports of the rear pump can accord the types of “ HDA2[HDH2] ” series ; and if you have other types , please contact us .

油封/ Seals

省略 - 温度范围在-10°C~+80°C，进油口最高绝对压力为 3bar。

V - 适用于高温介质，温度范围在-10°C~+120°C。

H - 适用于低温介质，温度范围在-40°C~+120°C。

T - 适用于进油口最大绝对压力 3~6bar。

N - 适用于进油口最大绝对压力 3~6bar。

Omit - Range between -10°C and +80°C, inlet pressure up to max. 3 bar absolute .

V - Version suitable for fluid at hi-temperatures , range between -10°C and +120°C.

H - Version suitable for fluid at low-temperatures , range between -40°C and +80°C.

T - Version suitable for inlet pressure up to max. 3 and 6 bar absolute.

N - Version suitable for inlet pressure up to max. 3 and 10 bar absolute .

油路形式/Ports version

E - 两进两出（中间完全密封）。

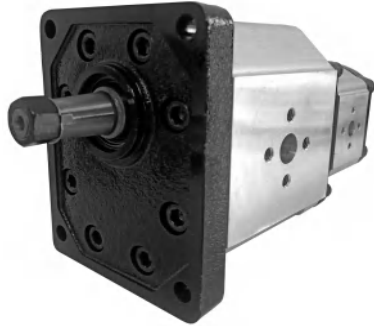
E - two inlet and two outlet (separated type) .

范例/Examples

HDH3/2D33/10B1F24/F2Z7-E = HDH 系列，3/2 组，右旋，33/10 cc/rev 排量，B1 前盖，F24/F2 油口，Z7 轴伸，标准油封，E 油路形式。

HDH3/2D33/10B1F24/F2Z7-E = HDK series , 3/2 group pump , Clockwise , 33/10 cc/rev , B1 front cover , F24/F2 ports , Z7 shaft , standard seal , E ports version .

HDH3/2-B1-E

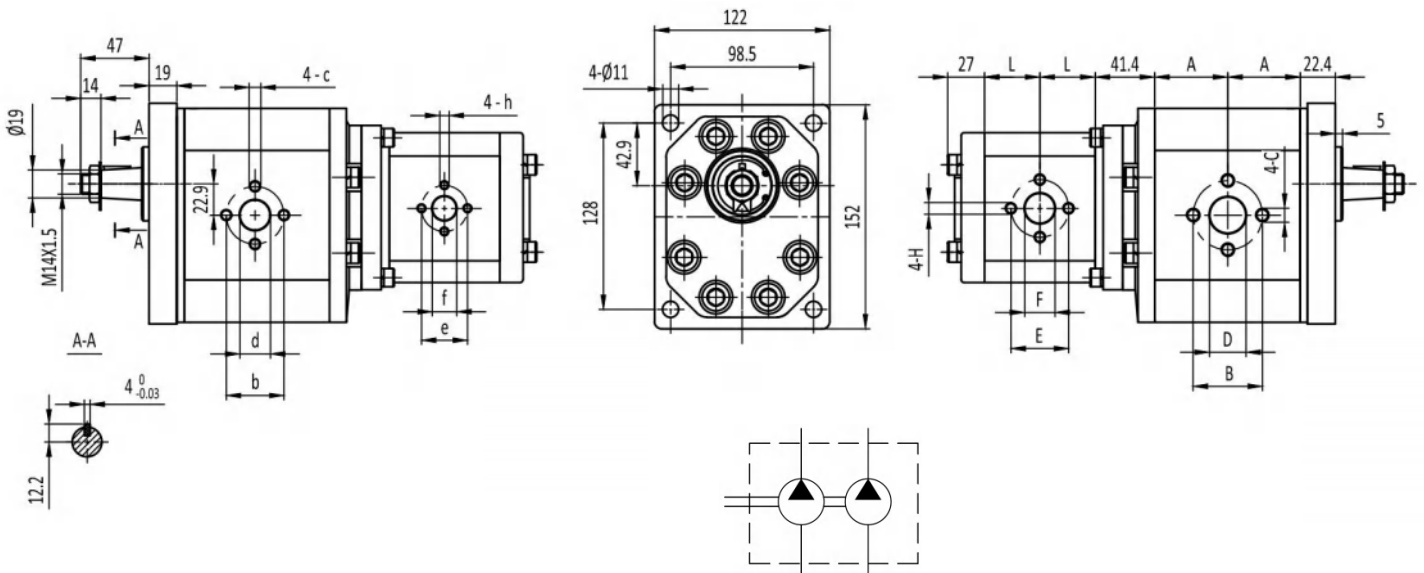


安装泵时, 20 个 M10 的螺栓扭矩设定为 $67 \pm 3\text{Nm}$, 4 个 M8 的螺栓扭矩设定为 $27 \pm 3\text{Nm}$ 。

To mount the pump , twenty M10 screws with a torque wrench setting fixed at $67 \pm 3\text{Nm}$, and four M8 screws with a torque wrench setting fixed at $27 \pm 3\text{Nm}$.

出油口
OUTLET

进油口
INLET



前泵技术参数表 Technical parameter table of front pump

规格 Type	排量 Displacement (cm ³ /rev)	最大压力 Max. pressure			最高转速 Max. speed (r/min)	最低转速 Min. speed (r/min)	尺寸 Dimensions						
		P1 bar	P2 bar	P3 bar			A mm	B mm	D mm	C mm	b mm	d mm	c mm
HDH3/2D20/**B1-E	20	200	225	250	3000	600	40.6	56	27	M10	56	19	M10
HDH3/2D22/**B1-E	22	200	225	250	3000	600	41.6	56	27	M10	56	19	M10
HDH3/2D26/**B1-E	26	200	225	250	3000	600	43.1	56	27	M10	56	19	M10
HDH3/2D33/**B1-E	33	200	225	250	3000	500	46.1	56	27	M10	56	19	M10
HDH3/2D39/**B1-E	39	200	225	250	3000	500	49.6	56	27	M10	56	19	M10
HDH3/2D46/**B1-E	46	200	225	250	3000	500	52.6	51	27	M10	51	27	M10
HDH3/2D50/**B1-E	50	200	225	250	3000	500	54.6	56	27	M10	56	27	M10
HDH3/2D52/**B1-E	52	200	225	250	3000	500	55.6	56	27	M10	56	27	M10
HDH3/2D55/**B1-E	55	200	230	250	2800	400	56.6	62	33	M10	51	27	M10
HDH3/2D63/**B1-E	63	200	230	250	2800	400	60.6	62	33	M10	51	27	M10
HDH3/2D71/**B1-E	71	180	200	220	2500	400	64.1	62	33	M10	51	27	M10

HDH3/2-B1-E

后泵技术参数表 Technical parameter table of rear pump

规格 Type	排量 Displacement (cm ³ /rev)	最大压力 Max. pressure			最高转速 Max. speed (r/min)	最低转速 Min. speed (r/min)	尺寸 Dimensions						
		P1	P2	P3			L	E	F	H	e	f	h
HDH3/2D**/3B1-E	3	200	225	250	3000	800	24.8	30	13	M6	30	13	M6
HDH3/2D**/4B1-E	4	200	225	250	3000	600	25.5	30	13	M6	30	13	M6
HDH3/2D**/6B1-E	6	200	225	250	3000	600	27.1	30	13	M6	30	13	M6
HDH3/2D**/8B1-E	8	200	225	250	3000	500	28.7	30	13	M6	30	13	M6
HDH3/2D**/10B1-E	10	200	225	250	3000	500	30.3	40	20	M8	30	13	M6
HDH3/2D**/12B1-E	12	200	225	250	3000	500	32	40	20	M8	30	13	M6
HDH3/2D**/14B1-E	14	200	225	250	3000	500	33.6	40	20	M8	30	13	M6
HDH3/2D**/16B1-E	16	200	225	250	3000	500	35.3	40	20	M8	30	13	M6
HDH3/2D**/18B1-E	18	200	225	250	3000	500	36.9	40	20	M8	30	13	M6
HDH3/2D**/20B1-E	20	200	225	250	3000	400	38.5	40	20	M8	30	13	M6
HDH3/2D**/22B1-E	22	200	225	250	3000	400	40.2	40	20	M8	30	13	M6
HDH3/2D**/25B1-E	25	200	215	230	3000	400	42.6	40	22	M8	30	13	M6
HDH3/2D**/28B1-E	28	180	190	200	2500	400	45.1	40	22	M8	30	13	M6
HDH3/2D**/30B1-E	30	160	170	180	2500	400	46.8	40	22	M8	30	13	M6

HDH3/2-A0-E

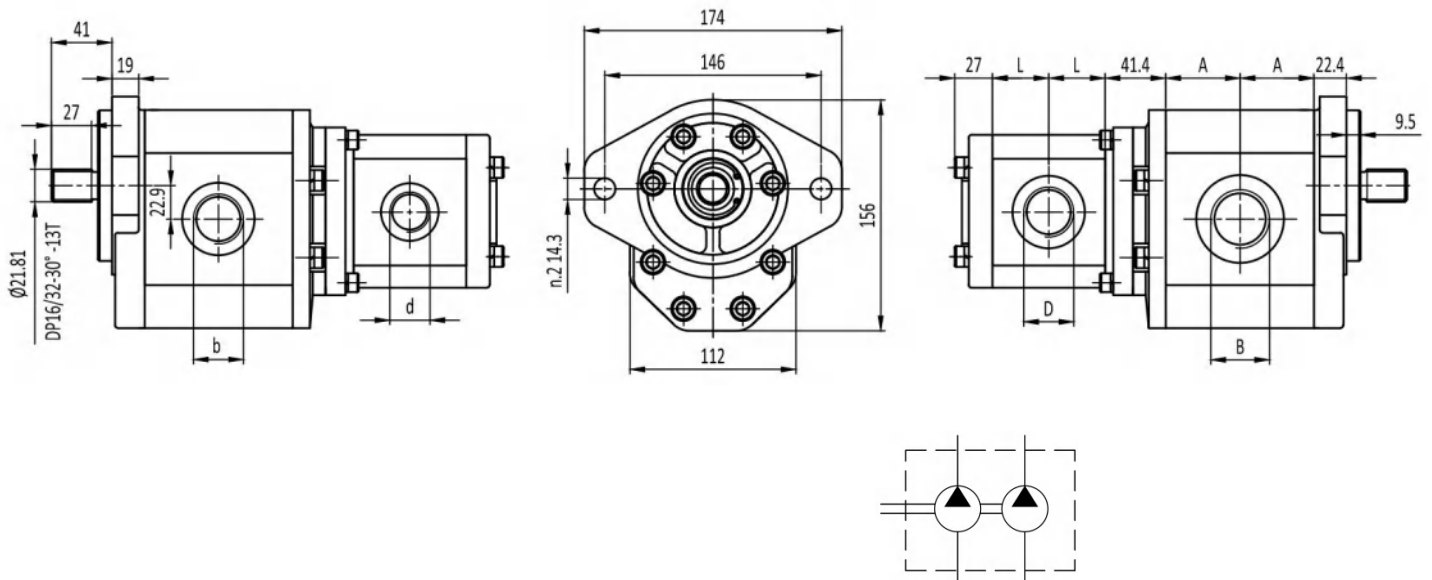


安装泵时, 20 个 M10 的螺栓扭矩设定为 $67 \pm 3\text{Nm}$, 4 个 M8 的螺栓扭矩设定为 $27 \pm 3\text{Nm}$ 。

To mount the pump , twenty M10 screws with a torque wrench setting fixed at $67 \pm 3\text{Nm}$, and four M8 screws with a torque wrench setting fixed at $27 \pm 3\text{Nm}$.

出油口
OUTLET

进油口
INLET



前泵技术参数表 Technical parameter table of front pump

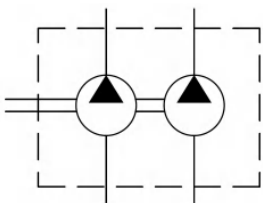
规格 Type	排量 Displacement (cm ³ /rev)	最大压力 Max. pressure			最高转速 Max. speed (r/min)	最低转速 Min. speed (r/min)	尺寸 Dimensions		
		P1 bar	P2 bar	P3 bar			A mm	B	D
HDH3/2D20/**A0-E	20	200	225	250	3000	600	40.6	G3/4	G3/4
HDH3/2D22/**A0-E	22	200	225	250	3000	600	41.6	G3/4	G3/4
HDH3/2D26/**A0-E	26	200	225	250	3000	600	43.1	G1	G3/4
HDH3/2D33/**A0-E	33	200	225	250	3000	500	46.1	G1	G3/4
HDH3/2D39/**A0-E	39	200	225	250	3000	500	49.6	G1	G3/4
HDH3/2D46/**A0-E	46	200	225	250	3000	500	52.6	G1 1/4	G1
HDH3/2D50/**A0-E	50	200	225	250	3000	500	54.6	G1 1/4	G1
HDH3/2D52/**A0-E	52	200	225	250	3000	500	55.6	G1 1/4	G1
HDH3/2D55/**A0-E	55	200	230	250	2800	400	56.6	G1 1/4	G1
HDH3/2D63/**A0-E	63	200	230	250	2800	400	60.6	G1 1/4	G1
HDH3/2D71/**A0-E	71	180	200	220	2500	400	64.1	G1 1/2	G1 1/4

HDH3/2-A0-E

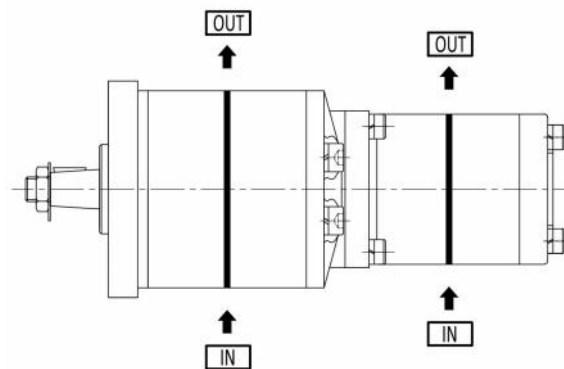
后泵技术参数表 Technical parameter table of rear pump

规格 Type	排量 Displacement (cm ³ /rev)	最大压力 Max. pressure			最高转速 Max. speed (r/min)	最低转速 Min. speed (r/min)	尺寸 Dimensions		
		P1 bar	P2 bar	P3 bar			L mm	D	d
HDH3/2D**/3A0-E	3	200	225	250	3000	800	24.8	G1/2	G1/2
HDH3/2D**/4A0-E	4	200	225	250	3000	600	25.5	G1/2	G1/2
HDH3/2D**/6A0-E	6	200	225	250	3000	600	27.1	G3/4	G1/2
HDH3/2D**/8A0-E	8	200	225	250	3000	500	28.7	G3/4	G1/2
HDH3/2D**/10A0-E	10	200	225	250	3000	500	30.3	G3/4	G1/2
HDH3/2D**/12A0-E	12	200	225	250	3000	500	32	G3/4	G1/2
HDH3/2D**/14A0-E	14	200	225	250	3000	500	33.6	G3/4	G1/2
HDH3/2D**/16A0-E	16	200	225	250	3000	500	35.3	G3/4	G1/2
HDH3/2D**/18A0-E	18	200	225	250	3000	500	36.9	G3/4	G1/2
HDH3/2D**/20A0-E	20	200	225	250	3000	400	38.5	G3/4	G1/2
HDH3/2D**/22A0-E	22	200	225	250	3000	400	40.2	G3/4	G1/2
HDH3/2D**/25A0-E	25	200	215	230	3000	400	42.6	G3/4	G1/2
HDH3/2D**/28A0-E	28	180	190	200	2500	400	45.1	G3/4	G1/2
HDH3/2D**/30A0-E	30	160	170	180	2500	400	46.8	G3/4	G1/2

油路形式/PORTS VERSION



E



HDH3/3

如何订购/HOW TO ORDER



备注：油口和轴伸可以根据前面“HDH3”系列里面选项进行选择，如果您还有其它的型号，请联系我们。

Remark : choose the ports and shaft can accord the types of “HDH3” series ; and if you have other types , please contact us .

油封/ Seals

省略 - 温度范围在-10°C~+80°C，进油口最高绝对压力为 3bar。

Omit - Range between -10°C and +80°C, inlet pressure up to max. 3 bar absolute .

V - 适用于高温介质，温度范围在-10°C~+120°C。

V - Version suitable for fluid at hi-temperatures , range between -10°C and +120°C.

H - 适用于低温介质，温度范围在-40°C~+120°C。

H - Version suitable for fluid at low-temperatures , range between -40°C and +80°C.

T - 适用于进油口最大绝对压力 3~6bar。

T - Version suitable for inlet pressure up to max. 3 and 6 bar absolute.

N - 适用于进油口最大绝对压力 3~6bar。

N - Version suitable for inlet pressure up to max. 3 and 10 bar absolute .

油路形式/Ports version

E - 两进两出（中间完全密封）。

E - two inlet and two outlet (separated type) .

F - 两进两出（中间不完全密封）。

F - two inlet and two outlet (common type) .

范例/Examples

HDH3/3D33/33B1F24/F24Z7-E = HDH 系列，3/3 组，右旋，33/33 cc/rev 排量，B1 前盖，F24/F24 油口，Z7 轴伸，标准油封，E 油路形式。
 HDH3/3D33/33B1F24/F24Z7-E = HDK series , 3/3 group pump , Clockwise , 33/33 cc/rev , B1 front cover, F24/F24 ports , Z7 shaft , standard seal , E ports version .

HDH3/3-B1-E



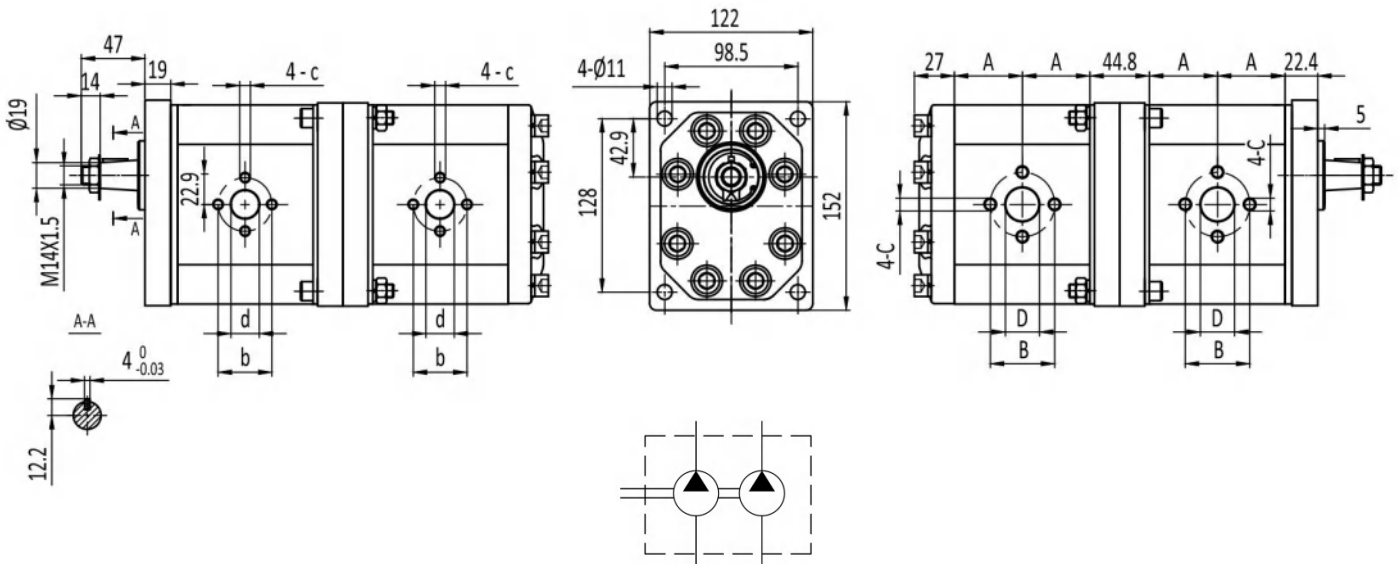
轴伸 M14X1.5 螺母扭矩设定为 80Nm。
 安装泵时, 36 个 M10 的螺栓扭矩设定为 $67 \pm 3\text{Nm}$ 。

Shaft M14X1.5 nut with a torque wrench Setting fixed at 80Nm .

To mount the pump , thirty-six M10 screws with a torque wrench setting fixed at $67 \pm 3\text{Nm}$.

出油口
 OUTLET

进油口
 INLET



规格 Type	排量 Displacement (cm ³ /rev)	最大压力 Max. pressure			最高转速 Max. speed (r/min)	最低转速 Min. speed (r/min)	尺寸 Dimensions						
		P1 bar	P2 bar	P3 bar			A mm	B mm	D mm	C mm	b mm	d mm	c mm
HDH3/3D**/**B1-E	20	200	225	250	3000	600	40.6	56	27	M10	56	19	M10
	22	200	225	250	3000	600	41.6	56	27	M10	56	19	M10
	26	200	225	250	3000	600	43.1	56	27	M10	56	19	M10
	33	200	225	250	3000	500	46.1	56	27	M10	56	19	M10
	39	200	225	250	3000	500	49.6	56	27	M10	56	19	M10
	46	200	225	250	3000	500	52.6	51	27	M10	51	27	M10
	50	200	225	250	3000	500	54.6	56	27	M10	56	27	M10
	52	200	225	250	3000	500	55.6	56	27	M10	56	27	M10
	55	200	230	250	2800	400	56.6	62	33	M10	51	27	M10
	63	200	230	250	2800	400	60.6	62	33	M10	51	27	M10
71	180	200	220	2500	400	64.1	62	33	M10	51	27	M10	

HDH3/3-A0-F

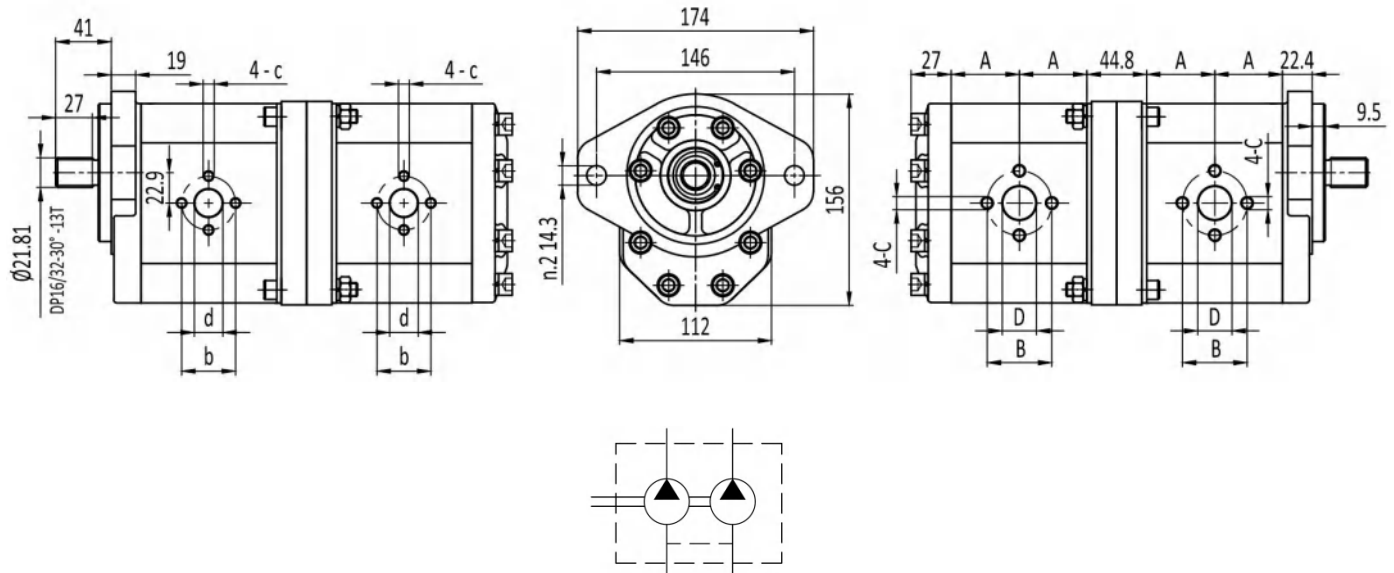


安装泵时, 36 个 M10 的螺栓扭矩设定为 $67 \pm 3\text{Nm}$ 。

To mount the pump , thirty-six M10 screws with a torque wrench setting fixed at $67 \pm 3\text{Nm}$.

出油口
OUTLET

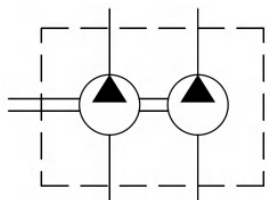
进油口
INLET



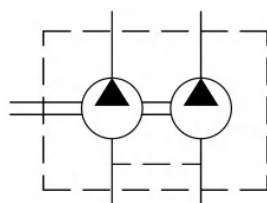
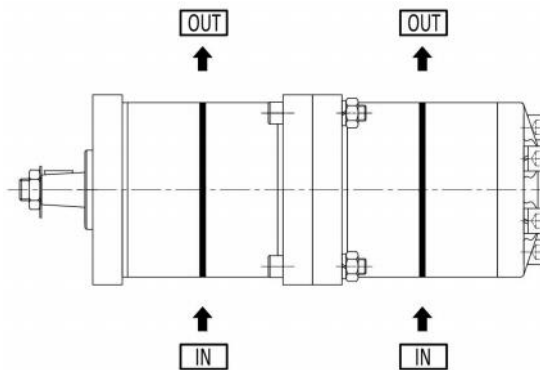
规格 Type	排量 Displacement (cm ³ /rev)	最大压力 Max. pressure			最高转速 Max. speed (r/min)	最低转速 Min. speed (r/min)	尺寸 Dimensions						
		P1 bar	P2 bar	P3 bar			A mm	B mm	D mm	C	b mm	d mm	c
HDH3/3D**/**A0-E	20	200	225	250	3000	600	40.6	56	27	M10	56	19	M10
	22	200	225	250	3000	600	41.6	56	27	M10	56	19	M10
	26	200	225	250	3000	600	43.1	56	27	M10	56	19	M10
	33	200	225	250	3000	500	46.1	56	27	M10	56	19	M10
	39	200	225	250	3000	500	49.6	56	27	M10	56	19	M10
	46	200	225	250	3000	500	52.6	51	27	M10	51	27	M10
	50	200	225	250	3000	500	54.6	56	27	M10	56	27	M10
	52	200	225	250	3000	500	55.6	56	27	M10	56	27	M10
	55	200	230	250	2800	400	56.6	62	33	M10	51	27	M10
	63	200	230	250	2800	400	60.6	62	33	M10	51	27	M10
71	180	200	220	2500	400	64.1	62	33	M10	51	27	M10	

HDH3/3

油路形式/PORTS VERSION



E



F

